

WEATHER

	Min.	Max.	Precip.
Wednesday, April 9	36	45	0.00
Thursday, April 10	33	42	0.00
Friday, April 11	31	47	0.00
Saturday, April 12	24	45	0.00
Sunday, April 13	25	48	0.00
Monday, April 14	25	49	0.00
Tuesday, April 15	25	45	0.01

ONE HUNDRED-FIFTH YEAR—No. 44

12 Pages This Week

Plus 4-Page Supplement

CHELSEA, MICHIGAN, THURSDAY, APRIL 17, 1975

15c per copy

SUBSCRIPTION: \$6.00 PER YEAR

The Chelsea Standard

QUOTE

"Few things are impossible in themselves; application to make them succeed falls us more often than the means."
—La Rochefoucauld.

Circus Veteran of Two Summers Is Sophomore Neil Cockerline



NEIL COCKERLINE, Chelsea's own clown, is known among fellow Joys (clown parlor) as Nello Craig. Neil has spent two summers apprenticing under a professional clown. This summer he will be performing in the area, and perhaps set up a clown class.

"Nello Craig the Clown and his Sunshine Show," is the name that Chelseaite Neil Cockerline has chosen for his repertoire of clown shows known to those in the trade as "clowning."

Sunny Neil looked, as he entered the office Saturday morning to chat about clowns, their history, their future, and his.

Sporting electric yellow pants, a deep rosy pink T-shirt, an orange necktie with a screaming yellow happy face and a gay plaid knee-length coat of blue, green, and yellow, Neil reflected on his summer apprenticeships to clowns, life with the circus and his future in clowning.

A sophomore at Chelsea High school, Neil's first interest in the circus, like that of many of us, arose as the result of a visit to the Shrine Circus in Detroit.

Since then, Neil has been an avid fan of circuses and especially clowns.

For Neil, becoming a clown has all been part of a dream held since that trip he made to Detroit in the fifth grade.

Success comes from the will to succeed, and judging by Neil's will, it is no wonder that a few years later he was traveling with the Miller-Johnson Circus and apprenticing under a clown known professionally as Mister Spudd.

Neil's acquaintance with Spudd developed into a year of correspondence in which letters to the clown revealed Neil's interest in the circus and his desire "to make people happy, to clown."

Spudd asked Neil to join him one summer. That summer Neil was 13 years old.

He and Spudd worked together, but always Neil as the apprentice. It was a summer of hard work. In order to travel with the circus, Neil had to earn his keep, and when he wasn't busy selling popcorn, programs, and candy corn, he was clowning, developing a character.

(Continued on page three)



WINNING SPEAKERS in the Regional Forensics competition held Monday evening at Ann Arbor Pioneer High school are Kim Brown, April 26, on the campus at the University of Michigan; Brad Glazier, Men's Oration; Merry Hoffmeyer, Storytelling; and For-

Three Regional Winners Qualify For State Forensics Tournament

Three regional winners of the Chelsea High school forensics team will continue to compete in state-wide competition slated for Saturday, April 26 in Ann Arbor. Winners of the April 14 regionals held at Ann Arbor Pioneer, were Merry Hoffmeyer, Brad Glazier and Kim Brown.

Notably the second toughest regional competition in the state, Coach William Coelius reported that this was the best showing Chelsea has had in Regional Forensics competition.

Winners who placed among the top three in one of 10 forensics categories in regional competition are qualified to go on to the state championship tournament.

Seven districts are represented in regional competition. Approximately five to six schools comprise a district.

Merry Hoffmeyer will represent Chelsea in the Storytelling category. Her telling of a short children's story, "Bread and Jam for Frances," won her a third place in the regionals.

Giving a verbal illustration of a new scientific process known as "Cloning," artificial reproduction was Brad Glazier. His oration (Men's Oration) placed second in Monday night's competition.

Kim Brown placed third in the Women's Extemporaneous event. Of all forensics events, extemporaneous speaking is probably the most difficult. The student is given a half an hour to prepare a speech on a current events oriented topic. While the students may bring magazines, newspapers, and books with which to help humor herself prepare the speech, he or she selects a topic blindly from face-down cards.

In the regional competition, Kim prepared and spoke on three topics: the political future of Cambodia, health insurance for the unemployed, and facts relating to the assassination of King Faisal.

The three will enter state competition, a day-long affair to be held on the campus of the University of Michigan, in the Frieze building.

Two preliminary events will be held, followed by semi-final and final competition. Winners of this competition will truly be the best in the state, as there is no disparity among school size.

Erwin Trinkle Dies Saturday

Erwin C. Trinkle, 37, of 8872 Sibley Rd., died at St. Joseph Mercy Hospital, Ann Arbor, Saturday, April 12. He had been in poor health since suffering injuries in an accident Nov. 17, 1973.

Born on April 22, 1937 in Lima township, he was the son of Wilbert and Hilda Bauer Trinkle. He graduated from Dexter High school in 1955. On Oct. 27, 1956 he was married to Shirley Ennis. They have been engaged in farming at the Sibley Rd. address for 16 years.

He is survived by his widow, a son, David Trinkle, and a daughter, Karen, at home, and two brothers, Harold and Charles Trinkle, both of Dexter, as well as several nieces and nephews, aunts and uncles. He was preceded in death by one brother, Carl.

Mr. Trinkle was a member of Faith Lutheran church of Dexter and the Chelsea Community Farm Bureau, as well as the Chelsea Fair Board.

In 1972, Erwin was presented with the Outstanding Young Farmer Award at the Jaycee's annual "Bosses Night."

Mr. Trinkle operated a 265-acre farm on Sibley Rd.

Funeral services were held at Salem Lutheran church at 1 p.m. on Tuesday, April 15 with the Rev. John P. Huebner officiating. Burial followed in Oak Grove Cemetery, Chelsea. The family suggests that those desiring to do so may make contributions in Mr. Trinkle's memory to Faith Lutheran church Memorial Fund. Arrangements were made by Burghardt Funeral Home.

High School Science Fair Open Tonight

Displays on plant growth, bacteriology, ecology, animal behavior, chicken and frog embryology, physiology and anatomy will be featured at the third annual Science Fair tonight, Thursday, at Chelsea High school.

The fair, which will run from 7-9 p.m. in the Chelsea High school library, will revolve around the life science projects and experiments prepared by students in the biology classes of Judy Scott and Barbara Wenk.

Parents and interested community persons are invited and encouraged to attend.



ERWIN C. TRINKLE

Kindergarten Round-Up Set Next Thursday

Parents of kindergarten-age children unable to attend the Thursday evening Kindergarten Round-Up April 24 will have an opportunity to enroll their children for 1975-76 kindergarten classes Thursday afternoon, April 24, from 1 to 3 p.m.

Registration will be held in the multi-purpose room of North school.

All residents living within the boundaries of the Chelsea School District with kindergarten-age children (those children who will be five years old on or before Dec. 1, 1975) are encouraged to attend either the afternoon or evening session.

The evening session, to be held from 7 to 8:30 p.m., will include a short program explaining the round-up.

The state requires that parents present their child's birth certificate when registering. Health forms will be provided.

For further information contact Robert Benedict, principal, North school, 475-2577 or Sylvester Wojcicki, principal, South school, 475-2913.

Fluoride Program Enrollment Period Extended to April 28

The enrollment deadline for this summer's Topical Fluoride Program has been extended to April 28 because of a few remaining openings in the program.

Circus Tickets Sold at the Door Monday Evening

Tickets for the Voorheis Bros. circus to be held Monday evening, April 21 in the Chelsea High School gymnasium will go on sale at the door 45 minutes before show time. The circus will give two performances, at 6 and 8 p.m.

Just four days away, and what a thrill it will be, when the Voorheis Bros. Circus arrives in Chelsea Monday, April 21.

Caravans of circus stars; the famed Italian Alberto Zoppe Troupe, the tumbling Lang Family, equilibrist, Jose Cole; the great Marcelli and his unicycle; trapeze artist Arturo Ponce, "Carla" the daring bareback ballerina, and television's favorite "Ricky the Clown," plus trained and wild animals, featuring Tashura, the world's only uncaged horseback riding lion, will all be here, accompanied by Col. Bill Voorheis, owner of the show.

Making its fifth tour, the three-ring circus will give two performances Monday evening, April 21 under the roof of the Chelsea High school gymnasium.

Each performance, at 6 and 8 p.m., will be given in magnificent splendor reminiscent of days gone by, according to Col. Bill and his 20-year-old son, Billy.

Adults and children alike will delight in the circus atmosphere taken on by the gymnasium. Complete, with the ringing of vendor's

Circus Coming To High School Monday Night

voices, "popcorn, peanuts, candy corn, get 'em here, get 'em hot, get 'em while you can."

Munching away, the audience will enjoy two hours of fine performances given in three rings simultaneously by both American and European acts. Clowns will roam, shaking hands with Chelsea youngsters, a special treat for children of all ages.

Sponsored by the Recreation Department, the circus comes to Chelsea to provide families with fine wholesome entertainment.

Advance tickets will be on sale at Gambles, Luke's Sporting Goods, and all Chelsea schools. A special family plan, admitting two adults and four children under 13 years of age will be made available at the door 45 minutes before showtimes with the presentation of a coupon found in The Standard, or purchased through a sponsor.

Regularly priced tickets will also be available at the door.

Proceeds from the circus will go to the Recreation Department where the funds will be put to use for the overall running of recreation programs.

Track Team Edged Out in Season Opener

After a bout with unseasonable weather resulting in a postponed meet with Saline, the Chelsea High school track team finally opened their 1975 season Monday, April 14, hosting Tecumseh and Pinckney in a triangular meet.

Coach Kruse's predictions, that "Tecumseh and Pinckney are tops in the area," were confirmed as Tecumseh led the meet, followed by Pinckney, then Chelsea who brought up the rear.

Tecumseh trackmen hurdled their way to victory, winning the meet with a score of 58½ points. Pinckney came in second scoring 50½ points, and Chelsea tagging close behind scored 47 points.

Coach Kruse reported that the score was about what he and the team expected, "a close meet with good times and distances for early season and under rather drab and cold weather conditions."

He continued, "We were pleased with the over-all performance and had some pleasant surprises along with a few disappointments."

Tecumseh shone against the drab skies in both distance and hurdling events. Pinckney worked especially well in relay events where trackmen have an opportunity to draw strength as a unit.

Chelsea's highpoints were made in the jumping events.

High jumper Rick Sweeney was able to mark up 6', taking first in the event. Fourth place went

to Howard Salyer, whose jump of 5'8" fell only four inches behind Sweeney's.

A second first for the Bulldogs was taken by Randy Sweeney who soared to success in the pole vault. His teammate Mark Burnett placed second equalling Randy's 11'6" clearing.

Curt Winans scored a winning 22.1 in the 180-yard low hurdles.

Outside of the consistently good performances by Salyer, Sweeney and Winans, performances by Randy Sweeney and Mark Burnett in the pole vault; Kevin Kelly in the sprints; and Phil Frames and Rick Haller in the two-mile run, "were very encouraging for early season," Kruse remarked.

In other triangular track action, Ishmael Picklesimer and freshman Mark Smyth took 2nd and 4th places, respectively in the shot put event. Ishmael scored 47'3" and Mark 43'1".

Teamwork in the 880 relay by Salyer, Kelly, Don Pierson and Dennis Bauer placed Chelsea in second place with a time of 1:38.4.

In the 880-yard run, Morris Johnson, a sophomore, took a fourth place with a time of 2:13.4.

Hurdlers Rick Sweeney and Curt Winans took a 3rd and 4th in the 120-yard high hurdles event. Rick with a time of 17, and Curt, 17.3.

In distance running, junior Bill (Continued on page five)

School Buys 37-Acre Plot On Freer Rd.

The Chelsea School District has purchased some 37 acres of land south of the high school, bounded by Freer Rd. on the east.

First use of the land will be to build a fenced-in parking area for school buses, with an entrance from Old US-12. A service facility will be constructed to permit needed maintenance work on school buses to help increase their useable life. It is hoped that immediate cost savings will be realized through stocking parts and improving the maintenance schedule during the cold months when the buses are used most.

Parts of the land will be used to expand athletic and recreational facilities as needed. A possible third elementary school could be built on the land as state law re-

quires at least a 15-acre site. There are no plans for such an addition to the system at this time but the land, which could be used for recreational activities, would be owned by the school system if that type of expansion would be needed.

In addition, with the buses centralized in a fenced area the high school could serve more cars during athletic contests, plays and other popular activities. Funds for the acquisition were made available by the bond issue of 1973 when land purchase for present and future needs was proposed to the voters.

Plans also call for lots along Freer Rd. to be used in the building trades program for the

(Continued on page three)

Dan Robbins Home Burns Saturday

The Trist Rd. home of the Daniel Robbins family was left scorched, charred and partially leveled late Saturday evening, April 12, following three hours of fighting by Grass Lake and Chelsea fire fighters in an effort to put out the blaze and salvage the home.

Nearby neighbors notified the Grass Lake and Chelsea Fire Departments at 6:45 p.m., Saturday, of the fire at the 13200 Trist Rd. address.

Both departments responded immediately, fighting together for more than three hours to drown the blaze which ignited from a television set in one of the bedrooms.

The family was away at the time of the fire. Two of the Robbins' three children arrived home following the arrival of the departments. Robbins and his wife arrived soon afterward.

There were no injuries reported in the fire.

Extensive damage was done to the house. What sections were left

(Continued on page six)



OLDEST AND LONGEST: Mr. and Mrs. Irven took two door prizes at the Washtenaw annual Livestock Banquet Saturday. Mrs. Irven received a potted plant for being the oldest, 86 years, and the two of them were the longest married couple at the banquet, being married 63 years.



HONORING A CHAMP: Chelsea Village Council honored Darryl West Tuesday evening, by presenting him with a framed document recognizing his outstanding individual performance in wrestling. West won the 1975 Class B 145-pound State title in wrestling earlier this year. Presenting West with his award and shaking the champ's hand is Village President Pro-Tem Tom Dmoch. Looking on outstanding individual performance in wrestling. West won the 1975 Class B 145-pound State title is wrestling coach, Richard Barels.

The Chelsea Standard, Thursday, April 17, 1975

Established 1871 **The Chelsea Standard** Telephone 475-1371

Excellence Award By Michigan Press Association
1951-1952-1960-1964-1965-1968

Walter P. Leonard, Editor and Publisher

Published every Thursday morning at 300 North Main Street, Chelsea, Mich. 48118, and second class postage paid at Chelsea, Mich., under the Act of March 3, 1879.

Subscription Rates (Payable in Advance)

In Michigan:		Outside Michigan:	
One Year	\$6.00	One Year	\$8.50
Six Months	\$3.50	Six Months	\$4.50
Single Copies	\$.20	Single Copies	\$.25

MEMBER **NATIONAL PAPER ASSOCIATION** - Founded 1885

National Advertising Representative:
MICHIGAN NEWSPAPERS, INC.
257 Michigan Ave.
East Lansing, Mich. 48823

LAFF OF THE WEEK

"I AM carving the turkey."

Uncle Lew from Lima Says:

Dear Mister Editor:

I feel has got to get up early to stay even in the game of life, and to get ahead in the game of politics it's best not to go to bed at all. I see by the papers where the head of prisons in North Carolina set up late studying his plan, and he almost caught members of the state legislature napping. All but two or three of the state legislators is Democrats, but the state has a Republican governor who appointed his own director of prisons. If you have any doubt about the power of appointed people, think who is trying to run the country these days from the White House and the State Department.

Anyhow, Mister Editor, North Carolina has been doing a lot of studying about its prisons, so Director David Jones come up with the idea of giving ever member of the legislature a pass to visit the state's Central Prison. This looked like a big help in the legislature's research till a Democrat perked up enuff to realize the pass would get em in Central Prison, but it didn't say nothing about getting em out. They all rode Jones pretty high over his plan for a full Republican takeover of state government.

Serious, the road to a heap of places people don't want to go is paved with politicians good intentions. The fellers at the country store Saturday night was discussing what has happened to the No. 1 all-time sweetheart of every politician, Social Security. For 38 years, whenever a candidate for practical any office started making promises he started with Social Security. It gets the old folks attention quick, and it has been safe subject for ever other voter cause politicians and everybody else think of Social Security as some-pun you got, not some-pun you pay.

Per instant, politicians got Social Security benefits hiked in 1970, 1971, 1972 and again last year. What folks didn't stop to look at was that payments went up .56 per cent in hopes of covering these benefits. Now it looks like we're jumping Social Security income enuff to keep up with out go, and leave folks anything at all to take home out of their wages.

Zeke Grubb said he had saw a report where Social Security now has promised to pay out two trillion dollars more than it can drain out of people now paying into it. And as more folks are laid off from work, the income goes down.

According to this piece Zeke reported on, Americans will draw out \$2.5 billion more Social Security this year than they will put in. This means the fund will be cut to \$43 billion, enuff for just over six months of benefits.

What makes the hole business so bad is another politicians promise, Zeke said. While payments go down on account of people being out of work, benefits keep going up with inflation because of automatic cost-of-living increases put in recent for the 30 million people who are drawing Social Security.

Yours truly,
Uncle Lew.

Howell Livestock Auction

Starts 1 p.m. Every Monday
Phone 546-2470. Dim Franklin

Market Report for April 14

The Wise Owl Says Ship to Howell
Phone 546-2470. Dim Franklin

CATTLE

Good to Choice Steers, \$24 to \$45
Good-Choice Heifers, \$20 to \$43
Fed Holstein Steers, \$20 to \$41
Utility & Standard, \$25 and down.

COWS

Heifer Cows, \$27 to \$29
Dairy-Commercial, \$24 to \$28
Canner, Cutter, \$20 to \$24
Fat Beef Cows, \$20 to \$23

BULLS

Heavy Bologna, \$28 to \$32
Light and Common, \$27 and down.

CALVES

Primes, \$50 to \$56
Good-Choice, \$41 to \$50
Heavy Deacons, \$29 to \$30
Cull & Med., \$10 to \$20

FEEDERS

500-600 lb. Good to Choice Heifers, \$22 to \$25
400-500 lb. Good to Choice Steers, \$25 to \$30
300-400 lb. Holstein Steers, \$22 to \$25
200-300 lb. Holstein Steers, \$20 to \$25
Common, Medium, \$20 and down.

SHEEP

Shorn Slaughter Lambs, Choice and Prime, \$47 to \$48.50
Good Utility, \$45 to \$46
Woolled Slaughter Lambs, Choice and Prime, \$46 to \$48
Good Utility, \$45 to \$46
Slaughter Ewes, \$10 to \$16
Feed Lamb, all weights, \$30 to \$38

HOGS

200-250 lb. No. 1, \$41 to \$42
200-250 lb. No. 2, \$40 to \$41
250 lb. and up, \$38 to \$40
Light Hogs, \$36 and down.

SWINE

Fancy Light, \$35 to \$38
500-600 lb., \$36 to \$38
600 lb. and up, \$34 to \$36

Beats and Steers

All Weights, \$39 to \$45

Feeder Pigs

Per Head, \$20 to \$45

HAY

1st Cutting, \$1.00 to \$2.00
2nd Cutting, \$2.00 to \$2.75

STRAW

Per Bale, 35c to 60c

COWS

Tested Dairy Cows, \$350 to \$500
Tested Beef Type Cows, \$200 to \$300

JUST REMINISCING

Items Taken from the Files of The Chelsea Standard

4 Years Ago...

Thursday, April 15, 1971—

Mike Gaken, son of Mr. and Mrs. James Gaken, 310 Pierce St., received a varsity letter in wrestling from Central Michigan University at Mt. Pleasant.

Eight-year-old Jennifer Troyer visited the Kingdom of Laos over the Christmas holidays, accompanying her aunt on a visit to Jennifer's grandmother.

Season opener for Chelsea's baseball team was played Thursday, April 8, when the varsity Bulldogs met with the junior varsity team from Adrian. Final score for the day was Chelsea 15, Adrian 8.

Numerous grass fires, because of the advent of the warm dry weather, kept the fire department hopping all week-end as they raced from one grass fire to another.

14 Years Ago...

Thursday, April 20, 1961—

St. Mary Catholic church, a Chelsea landmark since 1869, is being torn down to make way for eventual construction of a new church on the site. The building was condemned for further use sometime ago. Final services were held in the church Sunday, April 16.

Rumors started pouring into the office of The Chelsea Standard Monday morning and upon investigation it was discovered that the men at the Federal Screw Works Plant had decided to start giving handlebar moustaches to give the community an old-time feeling in keeping with the community-sponsored "Chelsea's Old Time Showboat."

Cynthia Hepburn, only Chelsea entrant in the third annual Southeastern Michigan Science Fair, held at Yost Field House, Ann Arbor, last week, received honorable mention for her exhibit—a shell collection and written report.

At an organizational meeting of the Chelsea High School Alumni Association meeting held Tuesday evening at the high school library, George Knickerbocker, president of the association, announced plans for the 1961 banquet to be held June 10 at 8:45 p.m., in the Chelsea High School cafeteria. Officers for the year are George Knickerbocker, president; Ray Steinbach, vice-president; Mrs.

Walton Bauer, secretary; and Mrs. George Heydlauff, treasurer.

24 Years Ago...

Thursday, April 19, 1951—

The Recreation Council met with the chairman, Charles Lancaster, last Thursday evening and approved a budget of \$1,500 for the summer's program. This amount provides for an enlarged swimming program which has been requested by clubs and organizations.

Chelsea High's baseballers opened their 1951 season last week on a happy note as they thumped Dexter, 10-0, behind Marty Tobin's no-hit hurling on Tuesday, and came from behind to nip Stockbridge, 2-1, on Thursday.

Gerald A. Lehmann, valedictorian of the class of 1951 at Chelsea High school, has been awarded a scholarship at Michigan State College, according to an announcement made by Prof. A. J. Clark, chairman of the Michigan State College Scholarship committee.

Hugh Sorensen, The Chelsea Standard's photographer, was awarded a certificate of "achievement in photography" at the Michigan Press Photography conference last Saturday.

34 Years Ago...

Thursday, April 17, 1941—

Announcement is made by Phyllis Wedemeyer that the work of installing four new bowling alleys in the hotel basement is rapidly nearing completion, and the grand opening has been set for Saturday of this week.

Al Johnson was elected czar of the Chelsea Softball League for the coming season, and Rolly Spaulding was elected secretary.

The Michigan Consolidated Gas Co. will hold their annual two-day cooking school from 2 to 4 o'clock on the afternoons of April 23 and 24 in the Sylvan Theatre Auditorium.

At the meeting of the Washtenaw County Board of Supervisors on Tuesday, Fred Broesamle, Sylvan supervisor, was elected chairman of the board. Edwin Schable of Freedom was elected vice-chairman.

MICHIGAN MIRROR

By Elmer R. White, Secretary, Michigan Press Association

Vocal Minority

Move over minorities, for one more group: the elderly.

In the recent past, senior citizens have been developing more and more clout in the halls of Congress and the Michigan Capitol.

When proposals affecting the elderly come up for debate in the Michigan House or Senate, it's not unusual to see groups of greying folks sporting "Senior Power" buttons in the galleries or outside the chambers talking with lawmakers.

Thus, prodding by senior groups appears to have led to increased interest in their problems.

In line with this interest is a study just getting underway in Lansing. Chaired by Democratic Sen. John Otterbacher of Grand Rapids, a special legislative committee is delving into the problems of nursing homes.

Otterbacher says no organized group lobbied for the study. "I just sort of backed into it," he says. "When I found that I would be chairman of the Senate Health and Social Services Committee, I started asking health experts for lists of problems in this area."

Nursing homes cropped up on those lists with some regularity, the senator says. "So we decided to look into some of the problems."

The special committee, which began work earlier this year, is looking at the accessibility and quality of care provided in nursing homes; the regulatory mechanisms and the adequacy or inadequacy of enforcement; the reimbursement systems; real or potential abuses in such areas as medication; and alternative approaches—what can and should Michigan do to help.

From Oaken Buckets . . .

Maple syrup season is at hand, and with it comes visions of quaint wooden buckets hanging on countless spigots stuck into maple trees across the state.

That vision may not be quite accurate these days. Word comes from New England, another big maple syrup section of the country, that these generations—old buckets may be a thing of the past—"victims" of plastic tubing and other accoutrements of technological advance.

"I've got one bucket up here for nostalgia's sake," says one syrup maker with some 2,000 taps on maple trees on his farm.

In Michigan, sap is taken—whether with wooden buckets or plastic tubing—from sugar and black maples for commercial production of maple products.

Sap for syrup can also be obtained from red and silver maples, but a Michigan State University Extension Service Bulletin says such sap usually has a lower sugar content. And that's an important consideration when you figure 43 gallons of sap are needed to produce one gallon of syrup. If there's less sugar in the sap, then you need more to make the syrup.

Sap flows from the trees about this time of year, when cool nights are followed by rapid warming in the days.

Normally, the taphole will give out from a quart to a gallon of sap per flow-period—anywhere from a few hours to a day or more. And there's a seasonal accumulation of 10-12 gallons from each taphole.

Once the sap is collected, it's evaporated down to syrup level by use of heat, filtered to remove any particles such as "sugar sand," and then packaged for sale.

Register by Postcard?

In an effort to push more people to the ballot box, a Democratic state representative is proposing easing Michigan's voter registration laws.

Rep. Perry Bullard of Ann Arbor wants to model the state's registration procedures after those of Minnesota.

He's suggesting that qualified persons should be allowed to register by filling in a postage-paid postcard form and mailing the signed card to the county clerk.

In addition, Bullard says qualified persons—who may have trouble getting to city hall or a township office to register during their own working hours—should be allowed to register at the polling place on election day.

Unregistered persons could simply go to the polls and, after completing an oath as to their qualifications and giving proof of residency, vote.

"Instead of preventing citizens from voting, the goal of state voter registration policy should be to encourage people to vote and to make it as easy as possible for citizens to register," Bullard says.

Baby Dedication Day Scheduled At Sharon Church

North Sharon Bible church is having a baby dedication day on Sunday, April 20. All babies two years old and younger may be in the dedication service.

Baby girls will receive a beautiful yellow rose bud while the young gentlemen will receive a red one.

Special music will be provided by North Sharon's youngest choir, the two- and three-year-olds.

Parents of the babies will have the opportunity to have a color picture taken of them and their baby and will receive a copy of Dr. Jack Hayes' book, "How To Rear Children."

For all the children in attendance, a helium-filled balloon will be given.

ROCKCRETE PRODUCTS

TRANSIT - MIXED CONCRETE

WASHED SAND & STONE - ROAD GRAVEL
LIMESTONE

Rite-Way Mixers

475-2848

6991 CHELSEA-MANCHESTER RD., MANCHESTER

KEN YOUNG CONSTRUCTION

PHONE 426-3342 or 878-6342 (after 6 p.m.)

Home Builder - Remodeling - Carpenter
Contractor - Brick Work - Fireplaces
Aluminum Siding - Block & Brick Work
Painting - Decorating - Trucking & Excavating

FOR SALE—3 scenic 10-acre parcels. Two with lake frontage on private lake.

FREE ESTIMATES WITH GUARANTEE ON ALL OUR WORK.

PHONE KEN YOUNG after 6 p.m., 668-7420 or 878-6342

Learn to DO IT YOURSELF—

Take our

CAKE DECORATING COURSE

this Spring at

CHELSEA HIGH SCHOOL

being offered by

Washtenaw Community College

in cooperation with Chelsea Public Schools

The Class starts Tuesday, May 6 - June 3 and meets from 6:30-9:30 p.m.

FEE: \$12.50 (In-district tuition) plus \$10 application/records for all new students.

Register NOW on the main campus - or REGISTER THE FIRST NIGHT OF CLASS.

For further information, call 971-6300, Ext. 453

DUNBAR'S DEXTER LOCKER

PAUL DUNBAR, OWNER

8083 MAIN ST., DEXTER PHONE 426-8466

BUY NOW WHILE PRICES ARE LOW!

BEEF

SIDES	HINDS	FRONTS
85c lb.	95c lb.	63c lb.

COMPLETE

(Includes Cutting, Wrapping, Sharp Freezing)

We Also Sell in Small Quantities

Discount to Civic Groups - We Accept Federal Food Stamps

CUSTOM SLAUGHTERING & PROCESSING

*Helen Jones has a NEW KITCHEN

Helen Jones has a new kitchen. New cabinets, stove, refrigerator, stainless steel sink, disposal, dishwasher, wallpaper, carpeting. Ann Arbor Federal Savings provided the Home Improvement Loan and Helen is paying just \$78.75 per month. Ann Arbor Federal Savings will, in fact, provide the funds for any worthwhile improvement. You too can have a new garage, bathroom, family room, heating system, decorating, remodeling, wiring...you name it. Ann Arbor Federal Savings will talk to you about it. You can borrow up to \$5000. Take several years to repay. Your home need not be paid for, and you don't need a down payment. Now is an especially good time to home improve because Home Improvement Loan rates at Ann Arbor Federal Savings have dropped.

*APPROX. COST \$78.75/MONTH FOR 60 MONTHS
Based on an estimate of \$3500.00 for carpeting, new cabinets, double stainless steel sink, disposal, range, refrigerator and dishwasher (note would be \$4725.00 - approximate annual rate 12.50%.)

ANN ARBOR FEDERAL SAVINGS

9 OFFICES TO SERVE YOU IN ANN ARBOR, CHELSEA, DEXTER, MANCHESTER, YPSILANTI, BRIGHTON

MEMBER FS LIC

Circus Veteran of Two Summers Is Sophomore Neil Cockerline

(Continued from page one)

As Neil relates, every clown must develop his own character. Each clown is as unique as each person on the street. "You draw on your own character, and you do what makes you happy, what you want to please others."

All basic clowning is reacting to the orientation of the audience, so they may react to you. For example, much of clowning today centers on those things we find in our immediate environment.

Neil has drawn on one common syndrome of the American lifestyle... the fast-food chains. In a sketch entitled "Colonel Sawdust's Georgia-Boiled Chicken, Eat In or Pass Out," Neil plays on his audience's feelings about the myriads of fast-food restaurants clustered along American roadways.

While touring with Spudd that summer, Neil lived the nomadic life of the circus; trailer living, always moving on. He grew to like it, and came to see it for what many of us laymen don't.

According to Neil, family life plays a big role for circus people. "They depend on each other for their livelihood, and their acts, which they constantly strive to perfect. Circus families have very close relationships."

In the past it used to be that circus people produced more circus people, the family and their acts perpetuated themselves. But now, Neil says it is no longer that way. "Many new people are entering the circus."

And just to prove his point he mentioned a clown college in Florida where each year clowns from the Ringling Brothers circus teach a select group of students the art of clowning.

Would Neil like to go there? He has considered it, but realizing he is young and has many years ahead of him, Neil's lean toward clowning as a profession for all time is questioned by his interests in other fields, such as commercial art. Neil doubts he will become a professional clown, though emphasizing that he "never will abandon it." Idealistically he'd like to clown part-time; entertain in hospitals,

schools and churches and for community affairs. Then, perhaps, supplement his clowning with something else, like art, where he might illustrate children's books about clowns and circuses or design posters and ad art for circus attractions.

But this, of course, is far off in the distant future. What about the near future, like this summer?

Neil plans to stay in the area. Entertaining in the Chelsea Community Hospital, the Methodist Home, the Chelsea Fair, and who knows where else he might be seen.

This summer he plans just to make people happy, "because especially today people need an escape from their problems, and I'd love to be the one to give it to them."

**HAPPY BIRTHDAY
ALAN**

from

Jaynor and Rachel

Village Books of Chelsea

Alan and Jaynor Johnston
105 1/2 S. MAIN ST. PH. 475-9260

GREENHILLS SCHOOL

ENTRANCE EXAMINATIONS

Sat., April 26, 8:45 a.m.-12 noon — Fee: \$10

Grades 7-12 College Preparatory

850 Greenhills Drive, off Eghart Road, Ann Arbor
To register for exam, call 769-4010

School Property...

(Continued from page one)

construction of houses. These homes would be sold to help finance the land purchase and the cost of materials. In the past, lots were purchased individually for the homes built by students. By doing this the school expects to recover a good share of the initial land costs.

Historical Society Told How To Trace Family

Chelsea Area Historical Society held their regular monthly meeting April 14 at the Congregational church. The April 11 Rummage Sale held in the former Buick Garage was reported to have been an incredible financial success. Plans are being made for an annual sale to raise needed funds.

Herbert Dreher, a resident of the Methodist Home, issued a challenge to area residents to find the tree with the largest circumference, measuring at shoulder height. He already has an official measurement of a magnificent white oak at 725 W. Middle of 128 inches. He would like to hear from anyone who can match this size. Contact either Dreher or society president, Mrs. Robert Allshouse.

The featured speaker at the meeting was Harold Jones demonstrating with charts and books, how one may trace his family tree. Because of hours spent in research of local cemeteries for names and inscriptions on grave-

stones, he said his grandchildren refer to him as the "Cool Ghoul." Anyone not at the meeting interested in learning the methods and sources used in tracing one's family tree may contact Jones.

One of Jones' charts listed the names of 41 heads of families who were passengers on the Mayflower. One prominent name, Miles Standish, has a direct descendant living in Chelsea. Jones also related facts concerning Elisha Congdon, one of Chelsea's founders. There are now 143 families in the area that can be traced directly to Congdon; who fathered 10 children, by two of three wives.

Jones' speech was an excellent addition to the society's program.

The audience left the meeting with resolve to accumulate pertinent facts from immediate family first, and then to search out some of the recommended sources, as listed by Jones.

The only woman who will listen to both sides of an argument is the woman who lives next door.

SPRING TERM

Starts

MAY 5

AT WASHTENAW COMMUNITY COLLEGE

REGISTER TODAY

DAILY HOURS: 8:30-11:30 a.m.
1:00-4:00 p.m.

EVENING HOURS: 6:30-8:30 p.m.

on

TUESDAY, APRIL 15

THURSDAY, MAY 1

For Further Information, Please Call

971-6300 - Ext. 421

BAND INSTRUMENTS

RENTALS
SALES
REPAIR



1 Year Free Service on Any Instrument - New or Used

THE MUSIC HUTCH

8107 MAIN ST., DEXTER

PHONE 426-4380

FRESH MEATS

Jiffy market

Big Enough To Serve You . . . Small Enough To Know You!

CORNER OF SIBLEY & WERKNER RDS. . . CHELSEA, MICHIGAN

PHONE 475-1701

HOURS: Sun. thru Fri., 8 to 8
Sat., 8 to 10

WE ACCEPT

U.S.D.A. FOOD STAMPS

SALE PRICES EFFECTIVE

Thurs., Apr. 17 thru Sun., Apr. 20

COMPLETE SUPERMARKET

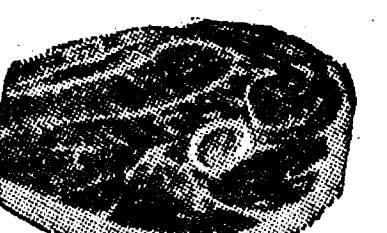
COLD BEER
WINE - LIQUOR

YOUNG, TENDER LEAN PORK

**PORK
STEAK..**

Cut
from
Lean
Butts

89¢ lb.



FRESH

PORK ROAST

79¢ lb.

FRESH

PORK CUTLETS

\$1.19 lb.

FRESH

PORK SAUSAGE

89¢ lb.

FRESH

SPARE RIBS

98¢ lb.

U.S. GOVT. INSPECTED CHOICE BEEF

U.S.D.A. CHOICE BEEF BLADE CUT

**CHUCK
ROAST . 79¢** lb.

U.S.D.A. CHOICE BEEF

7-BONE CHUCK ROAST . 89¢ lb.

U.S.D.A. CHOICE BEEF

ENGLISH OR ARM ROAST . . . \$1.09 Chuck lb.

U.S.D.A. CHOICE BONELESS

BEEF STEW \$1.09 Pre-Diced lb.

U.S.D.A. CHOICE BEEF LEAN

SHORT RIBS OF BEEF . . . 59¢ lb.

BEEF FRONT QUARTER

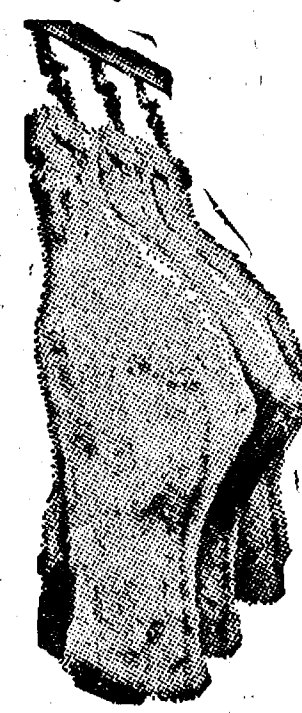


U.S.D.A.
**CHOICE
BEEF**

SIDES - FRONTS - HINDS
WHOLE RIBS - WHOLE LOINS

CUSTOM CUTTING - WRAPPING - FREEZING
QUICK SERVICE ON BUTCHERING
YOUR BEEF OR OURS

BEEF HIND QUARTER



MEADOWDALE
**SLICED
BACON**

1-Lb.
Pkg. **\$1.19**

Young, Tender, Sliced
**BEEF
LIVER**

49¢ lb.

CAMELOT
**CHUNK
BOLOGNA**

79¢ lb.

CAMELOT
**SKINLESS
WIENERS**

2-Lb.
Pkg. **\$1.49**

FARMER PEET'S
**ALL-BEEF
FRANKS**

1-Lb.
Pkg. **79¢**

U. S. CHOICE
**RIB
STEAK**

\$1.39 lb.

FRESH GROUND - LEAN
HAMBURGER

79¢ lb.

Satisfaction Guaranteed!

KNEIP
**CORNER BEEF
ROUND**

\$1.19 lb.

NEW, FROM SCHAFER
**Country
CORN BREAD**

1-Lb.
Loaf **49¢**

**KLEEN - MAID
WHITE BREAD**

39¢

**FARM MAID
Homogenized
FRESH MILK**

\$1.27

Gal. Crtn.
or Plastic

U. S. NO. 1
**MICHIGAN
POTATOES**

59¢

8-Lb.
Bag

MARATHON GAS

REGULAR

49.9

Incl. All Taxes

PREMIUM

53.9

Incl. All Taxes

LEAD-FREE

52.9

Incl. All Taxes



GAS PUMPS & STORE OPEN 7 a.m. to 10 p.m. 7 Days a Week — U. S. Authorized Food Stamp Store — Daily & Sunday Papers



NORTH ELEMENTARY SCHOOL NOTES

KINDERGARTEN—

Teacher: Mrs. Michelson
Chelsea has some great magicians. Ronald Johnson brought his brother, Jeff, to school on his birthday. Jeff is a magician and he entertained us with a lot of tricks.

The morning children had a special treat too. Jeff Boyer and Todd Koch did all kinds of magic and fooled everyone so many times. Some children will bring pieces of soft wood to school, any shape, so that we can make something in our woodwork class. Some children plan to look for frog eggs or maybe even some mosquito eggs. We will try to hatch them in school.

Mrs. Porter brought us a surprise. It is a big, round, metal incubator. There are 11 chicken eggs, 12 duck eggs and one big goose egg. Ronald Grifka brought us two brown eggs. We wonder if they will be brown chickens. They are supposed to hatch next week. It is so exciting. The jars that are on the incubator table have the insides of eggs in them. They show how chickens grow inside of an egg. When we candle the eggs with a flashlight, we will see if they look like the embryo in the jars. We learned a new word—embryo. We will borrow Mrs. Packard's brooder house for our baby chicks and ducks and, we hope, our goose.

It is nice to have springtime. Our fish kites will really fly. Our sweet potato is growing fast. The wheat in our cotton balls is ready to sprout.

Kathryn brought us a cherry branch that is starting to blossom. We need pussy willows. Do you have any pussy willows in your yards?

Our room has many growing living things. Mrs. Ellenwood brought us some seeds which we planted. Mrs. Dye is helping us with the music program we are planning for our parents. It will be on April 23 in our room. We are going to show them some games and dances we know too. The morning program will be at 8:45 a.m. and the afternoon program will be at 1:55 p.m.

Some folks are like blisters—they don't show up until the work is done.

FIRST GRADE—

Teachers: Mrs. Packard, Mrs. Peebles, Mrs. Stein

If you hear some big words and a lot of talk about fossils and bones, it is due to our dinosaur unit. This is a fascinating subject. It included a trip to the museum in Ann Arbor to see the skeletons. It is hard to imagine their size or the fact they really lived.

Our next unit is about good health with the emphasis on eating a good breakfast. We will be making and eating our own breakfast at school. Details will be coming by note.

Along with addition and subtracting, practice math has included telling time, using money, graphs, and measuring.

Spring brings the study of frogs and plants.

We have a special day coming in May. Watch for details. March birthdays were: Shanda Friday and Karen Killelea.

April birthdays are: Ty Anderson, Steve Rosentreter, Jennifer Lindsay, Carol Cordett, Cindy Poulter, Frances Schmidt. Everyone has learned a lot this year and thoughts are slowly going to second grade. It won't be long. Have a Happy Day.

SECOND GRADE—

Teacher: Mrs. Walton

We really enjoyed our spring vacation even though we did have snow. Our room really looked different when we came back. Our windows were replaced by cement blocks. We have been trying to brighten that gray wall, but we would rather have our windows back.

We have three girls celebrating birthdays in April—Lisa, Kelly and Alicia. We have started reading poetry. Mrs. Walton has poems written on cards. Some are about animals or people, and some are tongue twisters. We have copied some poems and later we will try to write some of our own.

Math seems to be getting harder now. We are learning to carry in addition and borrow in subtraction. We have also been working with fractions like $\frac{1}{2}$, $\frac{1}{3}$, and $\frac{1}{4}$.

+ Services in Our Churches +

ST. PAUL UNITED CHURCH OF CHRIST

The Rev. R. J. Ratliff, Pastor

Thursday, April 17—
1:30 p.m.—Prayer group.
7:30 p.m.—Long range planning committee.

Saturday, April 19—
8:30 - 11:30 a.m.—Confirmation, J.Y.F.

Sunday, April 20—
9:00 and 10:30 a.m.—Church school.

10:30 a.m.—Worship service.
7:00 p.m.—SYF.

Monday, April 21—
7:30 p.m.—Church school teachers.

Tuesday, April 22—
11:00 a.m.—AA-JJ Ministers.

6:30 p.m.—XYZ's Guest Night, pot-luck dinner.

Wednesday, April 23—
3:30 p.m.—Junior Choir.

7:30 p.m.—Stewardship Committee.

8:00 p.m.—Chancel Choir.

OUR SAVIOR LUTHERAN CHURCH

1515 S. Main, Chelsea

The Rev. William H. Keller, Pastor

Sunday, April 20—
9:00 a.m.—Sunday school and Bible class.

10:30 a.m.—Worship service, with Holy Communion.

Monday, April 21—
7:45 p.m.—Church Council.

Tuesday, April 22—
7:30 p.m.—Parent Effectiveness training.

Wednesday, April 23—
4:00 - 6:00 p.m.—Confirmation classes.

8:00 p.m.—Choir.

ZION LUTHERAN CHURCH

Corner of Fletcher, Waters Rds.

The Rev. John R. Morris, Pastor

Saturday, April 19—
9:00-11:30 a.m.—Seventh grade YI.

Sunday, April 20—
9:00 a.m.—Sunday school.

10:15 a.m.—Worship service.

Luther League recreation at CHS gym.

Monday, April 21—
8:00 p.m.—Senior Choir.

Deadline for ALCW Convention Reservations.

Wednesday, April 23—
7:30 p.m.—Sunday school staff.

WATERLOO

FIRST UNITED METHODIST

Parks and Territorial Rds.

The Rev. Altha Barnes, Pastor

Every Sunday—
9:15 a.m.—Morning worship.

10:15 a.m.—Sunday school.

WATERLOO VILLAGE

UNITED METHODIST CHURCH

8118 Washington St.

The Rev. Altha Barnes, Pastor

Every Sunday—
10:00 a.m.—Sunday school.

11:15 a.m.—Worship service.

ST. JOHN'S (UNITED CHURCH OF CHRIST)

Rogers Corners

The Rev. Carl Asher, Pastor

9:30 a.m.—Sunday school.

10:30 a.m.—Worship service.

FIRST CHURCH OF CHRIST

SCIENTIST

1883 Washtenaw Ave., Ann Arbor

Every Sunday—
10:30 a.m.—Sunday school, morning service.

CONGREGATIONAL CHURCH

(United Church of Christ)

The Rev. Carl Schwarm, Pastor

Sunday, April 20—
9:45 a.m.—Choir practice.

10:30 a.m.—Sunday school and worship.

3:00 p.m. - 5:00 p.m.—Junior Pilgrim Fellowship bowling party, Chelsea Lanes.

Monday, April 21—
7:30 p.m.—Church Council.

Wednesday, April 23—
7:30 p.m.—Bible study.

ST. MARY CATHOLIC CHURCH

The Rev. Fr. David Philip Dupuis, Pastor

Mass Schedule:

Every Saturday—
4:00-5:00 p.m.—Confessions.

7:00 p.m.—Mass.

Immediately after 7 p.m. Mass—
Confession.

Every Sunday—
Winter schedule:

8:00, 10:00, 12:00 noon—Mass.

Summer schedule:

7:00, 9:00, 11:00 a.m.—Mass.

ST. BARNABAS EPISCOPAL CHURCH

20550 Old US-12

The Rev. Jerrold Beaumont

B.S.P., vicar

Rectory 475-2003

Church 475-8818

Every Sunday—
8:00 a.m.—Choir rehearsal.

10:00 a.m.—Holy Communion; first, third, and fifth Sundays.

10:00 a.m.—Morning Prayer, second and fourth Sundays.

Tuesday, April 8—
8:00 p.m.—Bishops Committee meeting.

NORTH SHARON BIBLE CHURCH

Corner of Fletcher, Waters Rds.

The Rev. William Enslin, Pastor

Every Sunday—
10:00 a.m.—Sunday school.

(Nursery will be available.) Junior church classes.

11:00 a.m.—Worship service.

6:00 p.m.—Senior High Youth meeting, Youth Choir.

7:00 p.m.—Evening worship services. (Nursery available.)

All services interpreted for the deaf.

Every Wednesday—
7:00 p.m.—Bible study and prayer meeting. (Nursery available.)

Bus transportation available: 428-7222.

ST. JOHN'S EVANGELICAL AND REFORMED CHURCH

(United Church of Christ)

Francisco

The Rev. Virgil King, Pastor

Every Sunday—
10:30 a.m.—Worship service.

Sunday school and catechism class.

ST. THOMAS EVANGELICAL LUTHERAN

Ellsworth and Haab Rds.

The Rev. Jerome Dykstra, Pastor

Sunday, April 20—
9:30 a.m.—Sunday school and Bible class.

10:45 a.m.—Worship, with Holy Communion.

Tuesday, April 22—
4:30 p.m.—Confirmation class.

Wednesday, April 23—
10:00 a.m.—Bible study.

CHELSEA MEDICAL CENTER

Every Other Wednesday—
1:30 p.m.—Worship service.

NORTH LAKE UNITED METHODIST CHURCH

The Rev. David Stiles, Pastor

Thursday, April 17—
8:00 p.m.—Nursery meeting.

Friday, April 18—
5:30 p.m.—Spaghetti supper, UMW.

Sunday, April 20—
10:00 a.m.—Worship service.

11:00 a.m.—Church school.

Tuesday, April 22—
9:30 a.m.—Bible study.

Wednesday, April 23—
6:30 p.m.—Men's group dinner.

CHURCH OF JESUS CHRIST OF LATTER-DAY SAINTS

Meetings at St. Barnabas Episcopal Church

20500 Old US-12

Every Sunday—
11:00 a.m.—Priesthood meeting.

12:30 p.m.—Sunday school.

5:30 p.m.—Sacrament meeting.

SALEM GROVE UNITED METHODIST CHURCH

3320 Notten Rd.

The Rev. Richard C. Stoddard, Pastor

Every Sunday—
9:30 a.m.—Sunday school.

Every Sunday—
10:30 a.m.—Worship service.

ST. JACOB EVANGELICAL LUTHERAN CHURCH

12501 Riethmiller Rd., Grass Lake

The Rev. Andrew Bloom, Pastor

Every Sunday—
9:00 a.m.—Worship service.

10:15 a.m.—Divine services.

CHELSEA BAPTIST CHURCH

377 Wilkinson St.

The Rev. James Stacey, Pastor

Every Sunday—
9:45 a.m.—Sunday school.

11:00 a.m.—Worship service.

Nursery care provided during all services.

6:00 p.m.—Junior and Senior Baptist Youth Fellowship.

Every Wednesday—
7:00 p.m.—Bible study and prayer meeting.

BAHA'I FIRESIDE

Every Thursday—
8:00 p.m.—At the home of Toby Peterson, 705 S. Main St.

Anyone wishing to learn about the Baha'i faith is welcome.

GREGORY BAPTIST CHURCH

The Rev. Paul White, Pastor

Every Sunday—
9:45 a.m.—Worship.

11:10 a.m.—Sunday school.

7:00 p.m.—Evening worship service.

7:30 p.m.—Thursday mid-week service.

FIRST ASSEMBLY OF GOD

The Rev. Thode B. Thodeson, Pastor

Every Sunday—
9:45 a.m.—Sunday school.

11:00 a.m.—Worship service.

7:00 p.m.—Midweek services.

Every Wednesday—
7:00 p.m.—Christ's Ambassadors.

Every Friday—
1:00 p.m.—Ladies Bible study.

IMMANUEL BIBLE CHURCH

146 E. Summit St.

The Rev. Larry Johnson, Pastor

Every Sunday—
9:45 a.m.—Sunday school, nursery provided.

11:00 a.m.—Morning worship.

7:00 p.m.—Evening worship.

Every Wednesday—
7:30 p.m.—Family hour, prayer meeting, and Bible study.

BETHEL EVANGELICAL AND REFORMED CHURCH

(United Church of Christ)

Freedom Township

The Rev. Roman A. Reinack, Pastor

Every Sunday—
10:00 a.m.—Worship service.

METHODIST HOME CHAPEL

The Rev. R. L. Clemans, Pastor

Every Sunday—
8:45 a.m.—Worship service.

Subscribe today to The Standard!

LOSE UGLY FAT

Start losing weight today or money back. MONADEX is a tiny tablet and easy to take. MONADEX will help curb your desire for excess food. Eat less—weigh less. Contains no dangerous drugs and will not make you nervous. No strenuous exercise. Change your life... start today. MONADEX cost \$3.00 for a 20 day supply. Large economy size is \$5.00. Also try AQUATABS: they work gently to help you lose water-bloat. AQUATABS—a "water pill" that works—\$3.00. Both guaranteed and sold by: CHELSEA DRUG STORE

101 N. Main St. • Mail Orders Filled

CUSTOM BUMPING and PAINTING
FREE ESTIMATES - ALL MAKES
Get the Best for Less!
FRANK GROHS CHEVROLET
Phone 426-4677 Dexter, Mich.

Give Your Calves a Head Start!

Add months to the productive life of your dairy herd with fast-growing calves that mature and freshen earlier. Feed Wayne Calfnip, the medicated milk replacer that outperforms milk. Sell the milk you save at today's higher prices. Young calves can't use the cereal in cheaper, cereal-filled milk replacers. Gains are much less. Scours can be 37% more frequent. Calfnip contains aureomycin, not one smidgeon of cereal filler. It's 95% milk products and high quality animal fats. Mixes easy. Stays mixed. Highly nutritious. Puts fat in the calf without leaving greasy film on your feed equipment! Feed for the difference innovations make. Feed Wayne.

McCALLA FEED SERVICE
Phone 475-8153
12875 Old US-12, Chelsea

WAYNE CALFNIP
From Allied Mills: The Innovators

AUCTION
JERRY JACOB, Auctioneer (313) 428-7975
LOCATION: From Manchester go 3 miles north on M-52; from I-94 go 8 miles south on M-52 to Auction site. Auction site across from Michigan Livestock Exchange. Parking at Michigan Livestock Exchange lot.

Sunday, APRIL 20, 1975
Beginning at 1:00 p.m.

Coffee grinder.	Fern stands.	Quilter.	House plants.
Antique bottles.	McCoy planters.	1 antique hammer type shotgun.	4 drawer cabinet.
Several small tables.	Odd chairs.	2 kitchen tables, formica top.	Milking pail.
Solid wood and straight back chairs.	Lamps.	2 metal kitchen stools.	25 gal. crock.
Copper boiler (good cond.)	2 gal. milk pail.	Copper washer.	Small drop leaf table.
1 milk can.	Picture frames.	Silver pie server.	Artificial flower arrangements.
3 shelled book case.	1 large trunk.	Wash bowl.	Magazine racks.
Square oak table.	Commode and dresser.	3 drawer chest.	Small coffee table.
Oak bed stand.	Upholstered seat rocker.	Organ stool and organ.	Two drawer stand.
Hand-made wooden chest.	White porcelain soup tureen.	Frosted fruit bowl.	Pie safe.
Depression glass.	Iron kettle.	Old pumps.	Cane seat chair.
Crosscut saw, 1 man saw.	Kitchen cabinet.	Dressing table with bench.	Chiffonier.
Crocheted table cloth.			

TERMS: Cash Day of Sale. Not responsible for accidents.

Mr. and Mrs. James Vida

PRO'S 9 DAYS ONLY SPRING SALE OF WINNERS

Shake off winter and think spring. Stock up at our annual 9 day only sale. PRO'S 2500 store buying power savings are passed on to you! Sorry but at these prices quantities are limited.

3 CUBIC FOOT WHEELBARROW
SPECIAL \$13.88

COMBINATION VOLLEY BALL BADMINTON SET
\$9.88 REG. \$13.25

LIGHTWEIGHT ALUMINUM ALLOY TENNIS RACKET
\$11.88 SALE PRICE (59)

PNEUMATIC DOOR CLOSER
Reg. \$5.00 Without Coupon \$2.49 SALE PRICE (175)

PAINT ROLLER & PAN SET
REG. \$2.65 99¢ SAVE \$1.66

20 INCH 3 SPEED FAN
SAVE OVER \$5.00 \$16.99

SINGLE SPEED 1/4 INCH ELECTRIC DRILL
\$7.88 REG. \$10.99

1/2 INCH 50 FEET VINYL HOSE
\$2.77 SALE PRICE (178)

CHELSEA HARDWARE
110 S. Main St. Ph. 475-1121

Annual Spring Salad Luncheon Plans Complete

Members of the Women's Fellowship of the First Congregational Church of Chelsea are "busy as bees" as they make final plans for their annual "Spring Salad Luncheon," to be held April 30, from 11 to 1:30 p.m.

A separate men's dining room which will serve hot dishes as well as salads will again be available. The Fellowship Room will be found with the tables heaped with many delicious baked items for sale.

Mrs. Lewis Bernath and Mrs. Carl Schwarm, co-chairmen of this event, have announced that Mrs. Philip Vogel will be the bake sale chairman. Food committee chairmen are Mrs. Toivo Riihimäki, Mrs. Graham Sprague and Mrs. Walter Wolfgang. Women's dining room will be under the direction of Mrs. Clarence Vogel and Mrs. Lydia Penhalligon will be in charge of the men's dining room. Mrs. Larry Chapman is publicity chairman and Mrs. Howard Kern is ticket chairman.

Tickets will be limited to 300 people. Tickets should be purchased in advance with the deadline set as April 27. Tickets may be purchased from any member or by contacting the ticket chairman Mrs. Howard Kern, 475-8730.

Child Study Club Hears of Musical Youth International

The April 8 meeting of the Chelsea Child Study Club was held at the home of Joan Eisele. Guests for the evening were Arlene Steinbach, Brenda Beeland and Alberta Colby.

Ruth Harbaugh reminded members and guests of the "Kaleidoscope of Chelsea Brides" fashion show to be held April 28 in the Chelsea High School Auditorium at 2 p.m. Proceeds will go to the Cancer Crusade.

Bruce Galbraith, the 1975 band director for Musical Youth International, and Dale Heydlauff, a Chelsea High school senior who will tour Europe with the choir this summer, presented a slide program on the Saline based Musical Youth International. Both Bruce and Dale were among the group that went on the 1974 summer program of MYI, presenting concerts throughout Australia.

Co-hostesses for the meeting were Mary Jo Miller and Mary Waldeck.

Karen Galbraith, program chairman, announced that the next meeting of the club will be April 22 at the home of Jean French. The program will be on the "Spaulding for Children" Agency.

Magic Mirror Beauty Salon

Open Tuesday thru Friday 9 a.m. to 9 p.m.
Saturday, 8 a.m. to 3 p.m.

PHONE 665-0816

SPRING IS HERE!

Be Sure To Shop Dancer's First!

Big Selection of New Spring and Summer Wear in All Departments

USE OUR LAY-AWAY PLAN

Many Well Known Brands At Popular Prices

The PLAYTEX SALE IS STILL ON

DANCER'S

Chelsea's Friendly Dept. Store

Pease - Pierce Wedding Vows Spoken at Albion

In an evening ceremony, Saturday, April 5, at the Albion Holiday Inn, Mabel Pease of Scotts and Nathan Pierce of Grass Lake exchanged wedding vows.

The 7 p.m. ceremony was performed by the Rev. Charles Fry of Battle Creek.

Attending the bride was her granddaughter, Polly Pease of Scotts.

Mr. Pierce chose his grandson Larry Pierce, of Grass Lake, to be his best man.

A reception at the Inn for the immediate families followed the ceremony.

The Pierce's will make their home at 13245 E. Michigan Ave., Grass Lake, upon return from a short trip South.

VFW Auxiliary Elects Officers

Officers were elected at the regular business meeting of the VFW Auxiliary Monday evening, April 14.

Elected president, Joan Barnes; senior vice-president, E. Bernice Schneider; junior vice-president, Norma Seyfried; treasurer, Mary Kniss; conductress, Elsie O'Dell; chaplain, Gertrude O'Dell; guard, Nina Matthews; trustee for the three years, Lucy Platt.

National Home chairman Elsie O'Dell reported on another project.

Betty Crocker coupons as well as books of plaid stamps will be used to install a sewage plant at the National Home.

A citation was presented to Lucy Platt by citation chairman Eulalie Packard for Poppy Participation.

The citation was issued at the Pow-wow, held in Escanaba, Poppy day in Chelsea will be May 16.

\$25 was voted for the purchase of curtains at Camp Trotter.

\$32.50 was voted for the Health and Happiness fund, a benefit for children at the National Home.

The next district convention will be Sunday, May 18 in Erie.

Elected delegates to the convention were Mary Kniss, Geraldine Klink, Lucy Platt, Eulalie Packard and Norma Seyfried. Alternates are Elsie O'Dell, Gertrude O'Dell, Betty Smith Sandee Ellenwood and Jeanene White.

Installation of newly-elected officers will be May 26 at 8 p.m. in the VFW Hall.

The department convention will be held in Lansing, June 19-22.

A \$5 donation was sent to help defray the expenses of Barbara Bishop, who is our National officer, and is endorsed for National Guard at the National Convention to be held in August, in Los Angeles.

Chairmen are requested to be present at 7 p.m. April 26, in the VFW Hall with their notebooks to complete yearly reports.

The next business meeting will be May 12 at 8 p.m. in the local VFW Hall.

TROOP 189

What plan did we make? We are planning to make our own dinner at next week's meeting. We discussed what we will prepare. We made decorations for the funeral homes. We had a visitor. A policeman talked to us about first aid.

Paula Dean, scribe.

Penny Pinchers Run Close Race At Zion Lutheran

Women of the afternoon and evening circles at Zion Lutheran church were pinching pennies this past month in an effort to see which circle could come up with the greatest number of pennies.

The afternoon Lydia Circle won, gathering 8,000 pennies. The evening circle lost the contest, but came close with 6,000 pennies.

Penny contest winners were treated to a salad luncheon Saturday afternoon, April 12 by the losing members of the evening circle.

The 14,000 pennies (\$140) went towards the purchase of new equipment for the kitchen at Zion Lutheran.

Historical Society Chooses Emblem In Art Contest

Barbara Boylan, a 1973 Chelsea High school graduate, was voted the winner in the Chelsea Area Historical Society's contest to select a logo to represent the society.

Barbara will receive \$10 for her representation of the Chelsea Clock Tower.

The society expects to use this logo as the official emblem for use on all future publications.

Barbara, a student in nursing at the University of Michigan, is a direct descendant of one of Chelsea's oldest names; Elisha Congdon. She is the daughter of Mr. and Mrs. Keith Boylan.

Several other entries received praise at the society's Monday night meeting for the effort and historical significance illustrated.

4-H Clubs ROGERS CORNERS HERDSMEN

Rogers Corners Herdsmen 4-H club met April 8 at Lima Township Hall. The meeting was brought to order by the president, Keith Johnson. Secretary Sue Heller called roll and read the minutes of the last meeting. Enrollment cards were filled out.

Club leaders this year are: Bob Heller, dairy; Lloyd Grau, sheep; Rod Powers, swine and beef cattle; Mark Staphis, poultry and rabbits; Peter Beaudoin, miscellaneous; Kay Poljan, field crops and gardening.

Doug Welshans and Dan Grau gave a demonstration on the buying and feeding of beef cattle. The feeder pig sale April 19 at Michigan State University was announced. All market lambs and feeder pigs have to be weighed in by May 3.

Meeting was adjourned and refreshments were served. Scott Powers, reporter.

BUSY TWO-IN-ONE

Summer is just around the corner and it is the time of year when many of our young people are deciding what they are going to be doing in the summer months.

In Dexter township the Busy Two-in-One 4-H club is having their organization meeting Saturday, April 19, at 9 a.m. at the home of Joan Ottoman, 12719 Waterloo Rd.

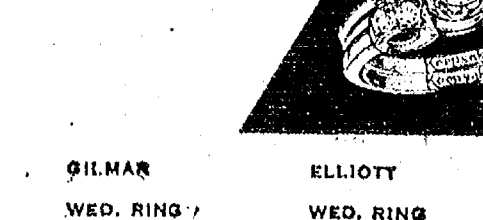
Old members as well as anyone else in the area interested in joining 4-H this year are urged to attend this meeting. It will be the time to meet the leaders who are volunteering their time to help you with the project of your choice and also talk with other members on their views of 4-H.

So, anyone interested, come this Saturday and get involved with 4-H this year!

A telephone call to social security may save a visit.



A perfect engagement diamond



Keepsake REGISTERED DIAMOND RINGS

WINANS JEWELRY

YOUR AUTHORIZED KEEPSAKE JEWELER

Co-Op Nursery Students Tour Metro Airport

Children of the Chelsea Co-Op Nursery had an unusual and different field trip last Monday when they visited the Detroit Metropolitan Airport.

Captain John Muncer of Chelsea arranged for the children to tour a North Central Airline's Conqair 580. Conducting the tour was Captain Muncer, who showed the youngsters the entire airplane, including the cockpit. Some of them even had an opportunity to try out the pilot's intercom system.

Each child was given a memoir of the visit; a hand puppet and wing pin, compliments of the airline.

Women's Slow Pitch League May Organize

Ladies, do you ever tire of watching your husbands pitch those balls, make those runs, and hit those homers? Do you ever wish that just for a moment you could be out there in that field enjoying an afternoon or evening of playing ball and sharing the victories and defeats?

The Chelsea Recreation Council has just the thing for you. The Women's Slow Pitch League. It hasn't been formed yet, but it could be, provided you can rally your forces together to compose four teams needed to create a league.

Charles Waller, who heads up this season's ball play for the Recreation Council, encourages women who are interested in forming a slow pitch league and those who perhaps already have teams, to contact him about an organizational meeting. "If enough interest is shown," said Waller, "we will get as far as an organizational meeting, and be able to begin basic plans for a season of play; one game a week for the months of June and July."

Interested women may phone Waller at 475-8816.

Track Team...

(Continued from page one)

Rademacher placed 4th with a time of 5:08.6 for the one mile run.

A second and fourth place combination of Kevin Kelly and Jon Collins in the 100-yard dash scored a time for Kelly of :10.9 and :11.0 for Collins.

Another second place was taken by Salyer in the 440-yard dash, where Kruse reported he would shine. Salyer's time for the sprint was :54.2.

In the two-mile distance run, Phil Frame's time of 10:35.6 placed him second. Teammate Rick Haller followed, placing third with a time of 10:41.4.

Kevin Kelly was light on his feet to place second in the 220-yard dash. Kevin's time for the event was :25.4.

In the 400 relay, the team of Picklesimer, Collins, Winans and Salyer lost to Pinckney to place second with a time just one-tenth of a second off the winning time of :47.1.

Despite the fact that Chelsea lost the meet, Kruse said, "We had a good first outing and if we can progress and build on to this we should be in good shape as far as the conference is concerned."

The first conference dual meet will be held tonight, (Thursday), when Lincoln will run on the home track at 4 p.m.

The following Tuesday, April 22, the team will travel to Saline for a make-up meet, followed by a home meet against Novi on April 24.



FLYING HIGH: Children of the Chelsea Co-Op Nursery didn't get to fly but they did tour an airplane last Monday in a field trip the group took to Detroit's Metropolitan Airport. Pictured beside the plane they toured, are Jill Kentschler and son Matt, Carol Smith and son Jeff, Holly Martin, Robbie Lyver, Kelly Kuzon, Bobby Rawson, Nikki Myers, Helen Karns, Casie Myers, Annalisa Muncer and her father, Captain John Muncer.

Jeff Daniels in CMU Production

Playing the part of Miles Gloriosus in Central Michigan's theatre production, "A Funny Thing Happened on the Way to the Forum," is Chelseaite Jeff Daniels.

The show opened last week-end in the Fred R. Bush Theatre on the CMU campus Saturday, and will continue through April 19.

Set in ancient Rome, the musical is based on the plays of Plautus, written by Larry Gelbart

and Burt Shevelove with music and lyrics by Stephen Sondheim. Directed by Irvine Smith, the play is full of outrageous puns and verbal gags. It is burlesque, vaudeville and mad, comic hokum combined in a rough and tumble and wheeling-dealing fashion.

A sophomore in English at the University, Jeff is the son of Mr. and Mrs. Robert L. Daniels, 665 Washington St.

Wendy Smith Represents Chelsea in All-Star Band

Flutist Wendy Smith represented Chelsea High school in an all-state high school band when it performed at Western Michigan University Friday, April 11. Known as the Fennell All-Star Band, the 120-member ensemble consists of the finest musicians representing 60 high school bands throughout the state of Michigan.

More than 200 students were nominated by their high school band directors for seats in this band which was conducted by Frederick Fennell from the University of Miami, Fla.

A special committee of professors from Western's music school subsequently selected those who had the opportunity to rehearse and perform under Fennell's baton.

Ron Harris, Chelsea High school band director, reported that a list of four names from Chelsea was submitted to officials at Western for consideration. According to Harris, the selection of students is based upon the need for a particular instrument in the Fennell Band, the student's position in his or her high school band and the recommendation given by the student's own band director.

Accompanying Wendy to the performance were fellow musicians, Randy Harris, Sue Pfeifle and Jim Botsford. Harris also joined the group.

The day-long event was part of the seventh annual Spring Conference on Wind and Percussion music. Harris reported that he and his students left Chelsea at 6 a.m. and returned home at midnight. "It was a long day," he remarked, "but well worth it. A great opportunity!"

The evening concert featuring the Fennell All-Star Band wound up the day with an 8 p.m. concert held in Miller Auditorium on the Kalamazoo campus.

Many a man's charity is to give unto others the advice he can't us himself.

CARPET REBIRTH

Give your carpet a new lease on life by cleaning it regularly.

JET SPRAY CARPET CLEANING

Use Your BankAmericard Phone 761-3025 or 475-1509 Ask for John Lixey.

FURNITURE SALE



BASEMENT ROOMFUL

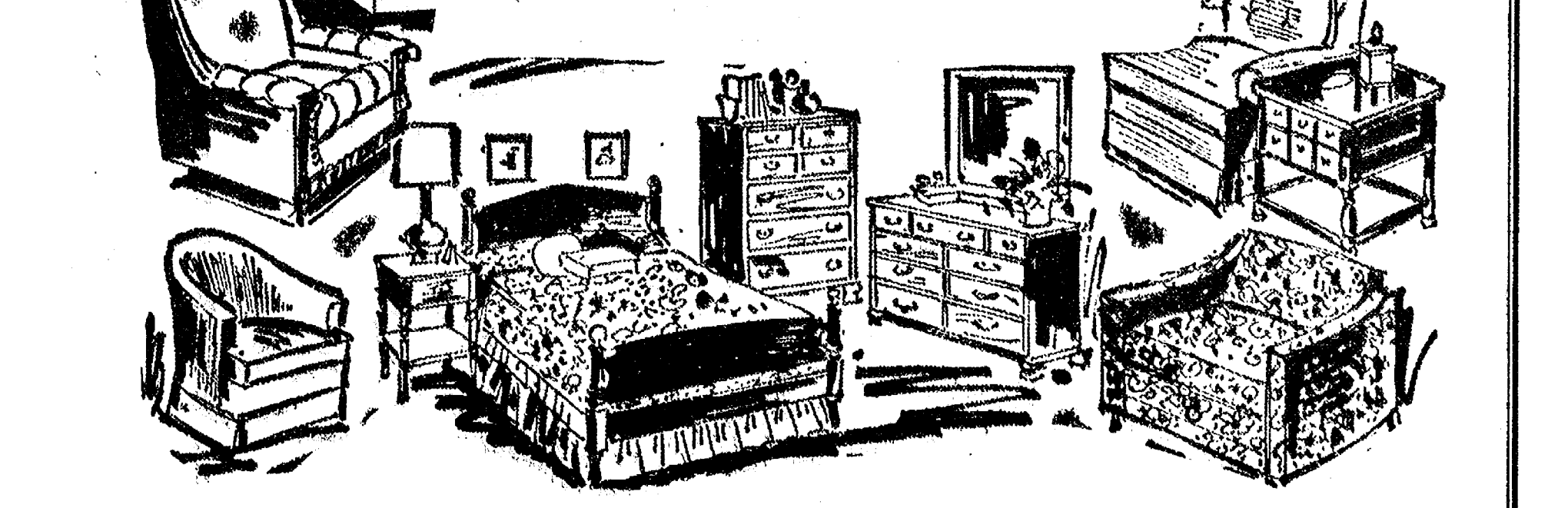
OVER 150 PIECES

ALL 1/2 PRICE Or Less

DISCONTINUED - DAMAGED

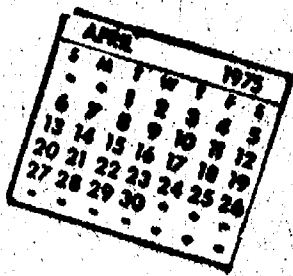
TRADE - INS

Dining Tables, Dining Chairs, End Tables, Lamps, Upholstered Chairs, Sofa, Loveseat, Rockers, Recliner, Floor Lamps, Dressers, Chests, Coat Rack, Desks, Hutch Tops, Cabinet, Head-boards, Beds, Mattresses, Box-springs, Pictures, TV Stand, Clocks, Nightstands.



Merhel Home Furnishings

Community Calendar



Kindergarten Round-Up, multi-purpose room North school, Thursday afternoon, April 24, 1 to 3 p.m. and evening 7 to 8:30 p.m. All parents of kindergarten age children requested to attend. Children's birth certificates required in order to register for the 1975-76 school year.

Kindergarten Round-up program sponsored by the North Lake Co-op Nursery, Tuesday, April 29, 8 p.m. at North Lake United Methodist church, 1411 North Territorial Rd. Four school districts will present their pre-school programs and services. Representatives will be available to answer questions.

Third annual Saline Jaycee Auxiliary Art Fair, May 3, 10 to 8 p.m., May 4, 11 to 6 p.m., at the Saline Farm Council Grounds on Saline-Ann Arbor Rd. Paintings, sculpture, woodcrafts, pottery, ceramics will be present. More than 60 artists in attendance. Anyone interested in renting a booth should call 429-4343. All proceeds go for community service projects.

Church of Christ, 13661 Old US-12 will be conducting a door-to-door religious survey in Chelsea during the month of April in order to determine ways in which they might better serve the community.

Chelsea Child Study Club, 8 p.m., April 22, hostess, Jean French. Program, "Spaulding for Children." Guests welcome.

Spring Salad Luncheon, Congregational church, April 30, 11 a.m. to 1:30 p.m. Men's dining room serving salads and hot dishes. Contact Mrs. Howard Kern, 475-8730, for tickets. \$2.25. Bake Sale in Fellowship Room.

Woman's Club of Chelsea, annual meeting, Tuesday, April 22, 8 p.m. at McKune Memorial Library. All annual reports due.

Senior Citizens monthly pot-luck birthday dinner, held in the meeting rooms on Park St., April 17 at 6:30 p.m. Committee, Mrs. Robert Hochrein and Mary Kniss. Watch The Standard for the date of the sauerkraut dinner.

Past Matrons and husbands, past patrons and wives. Pot-luck Friday, April 18, 6:30 p.m. at the Masonic Temple.

Flea market, every Sat., 10-4, North Lake United Methodist church, 1411 N. Territorial. xadv45

Tours of Chelsea Community Hospital and surgical center are available for small groups. To arrange for tours, call: Neva Jordan, 426-8027, or Dorothy Miller, 475-8020.

American Legion and Auxiliary hospital equipment available by calling Pat Merkel at 475-1824.

Town & Country Child Study Club, 7:30 p.m., April 22, at the home of Mrs. Carol Benedict, 7411 Bush Rd. Program, needlepoint demonstration by Mrs. Sherry Lawton. Members will work on program covers for next year.

North Lake Co-operative Nursery, Open House, Sunday, April 27, from 2-4 p.m. for prospective members to have an opportunity to meet the teacher and view the facilities.

Easy Riders 4-H Horse Club, bagged manure sale, Saturday, April 19, 10-6 p.m., at Polly's parking lot, corner of M-52 and Old US-12, Chelsea.

Young Homemakers, 7 p.m., Thursday, April 24, home of Sharon Roehm. Bring a salad.

Rummage Sale, OES, at the Masonic Temple, W. Middle St., Friday, April 25, 9 a.m. to 6 p.m. For pick-up call: 475-1141, 475-1803.

Chelsea K. of C., April 23, 8 p.m. at the Council Hall to discuss important business.

Second and third degree initiation for K. of C., April 20, St. Andrew's Catholic church, 910 Austin Rd., Saline, Mass. will be said at 12:30 p.m. The public is welcome.

Lyndon Study Club April 17 at the Lyndon Town Hall. Pot-luck dinner at 12:30 p.m.

Kindergarten Round-up, Thursday, April 24, 7-8:30 p.m. in the multi-purpose room of North school. All parents of kindergarten age children living in the Chelsea School district are urged to attend and register their children for the Fall-Winter '75-76 session. Children's birth certificates required.

Third Annual Saline Jaycee Auxiliary Art Fair, Farm Council Grounds on Saline-Ann Arbor Rd. at Pleasant Lake Rd., Saline, May 3, 10 a.m.-8 p.m. and May 4, 11 a.m.-6 p.m.

Overeaters Anonymous. For people with compulsive eating problems. Meetings will be held every Monday night at 8 p.m., at the Church of Good Shepherd, 2145 Independence Blvd., Ann Arbor. For further information call 434-3517.

Spaghetti Supper, North Lake Methodist church, Friday, April 18. Two settings: 5:30 p.m. and 6:30 p.m. \$2.50 adults, \$1.00 children.

BIRTHS

A daughter, Lori Lynn, to Mr. and Mrs. Dennis Brewer of Ann Arbor, April 12 at University Hospital, Ann Arbor. Maternal grandparents are Mr. and Mrs. Ralph McCalla of Chelsea. Paternal grandparents are Mr. and Mrs. Russel Brewer of Ann Arbor.

A son, Steven Robert, April 7, to Mr. and Mrs. Robert Runyan of Bushnell, Ill. Maternal grandparents are Mr. and Mrs. Walter Bauer of Williamston, formerly of Chelsea. Great-grandparents, Mr. and Mrs. George Bauer and Irene Proctor of Chelsea; and Kenneth Proctor of Dexter.

Track Meet Postponed

The track meet with Saline scheduled for April 10 has been postponed until April 22.

Children under 12. Tickets: Call 475-7538 or 475-8857.

Chelsea Home Meal Service delivers one hot meal a day to elderly and disabled living in the Chelsea area. For information call 475-8014 or 475-2923.

Chelsea Band Boosters meet second Thursday of every month, Chelsea High school band room, 8 p.m. All band members' parents are welcome.

Inquiries regarding the Chelsea blood bank may be directed to Harold Dudley in the event that Mrs. Dudley Holmes is unavailable, or to Robert Moyer, American Red Cross in Ann Arbor, 971-5300.

Chelsea Co-op Nursery applications for 1975 classes are now being taken. For information, call Jearl Mull, 426-8822.

Washtenaw County bookmobile, sponsored by the Washtenaw County Library will be at the North Lake United Methodist church, 1411 North Territorial, every other Wednesday from 4:25 to 5:10 p.m., beginning April 9.

Weekly Tuesday Nite Singles Club, dance, 9 p.m. to midnight, Ann Arbor "Y," with live band.

AA and Al-Anon meeting, Monday evenings at Chelsea Hospital, 8:30 p.m. Closed meetings.

Humane Society of Huron Valley has dogs and cats for adoption. Owners may reclaim their lost pets. Phone 662-5585. Open from 9 a.m. to 5 p.m. daily; Sunday, 1 p.m. to 5 p.m. 100 Cherry Hill Rd., quarter-mile south of Plymouth Rd. at Dixboro.

Pap tests are free for all area women, Tuesday mornings, at St. Joseph Mercy Hospital, Ann Arbor. Call American Cancer Society office, 668-8857 for appointment.

Chelsea Area Historical Society is still taking 1975 annual memberships. Applications for membership may be picked up at McKune Memorial Library, or write Box 334, Chelsea 48118, or telephone 475-7290 for more information.

DEATHS

Harrison B. West

Life-Long Area Resident Dies Following Long Illness

Harrison B. West of 626 Putnam, Pinckney, formerly of Sylvan Center, died Saturday, April 12 at Chelsea Community Hospital following a long illness.

Born March 29, 1889 in Sylvan township, he was the son of Russel and Emma Porter West. He married Mable Dyer May 6, 1907. She preceded him in death in 1962.

Mr. West lived his entire life in the Sylvan Center area where he was a farmer.

He is survived by three sons, Nelson and J. D. of Ypsilanti, and Donald of Pinckney; one daughter, Mrs. Carl (Martha) Arndt of Boca Raton, Fla., 21 grandchildren and 16 great-grandchildren.

Four sons preceded him in death, Arthur in 1930, Wilson in 1961, L.D. in 1972 and Harold in 1974.

Funeral services were held Tuesday, April 15 at 2 p.m. at the Staffan Funeral Home with the Rev. Glenn Barry, Sr., officiating. Burial followed in Maple Grove Cemetery, Sylvan Center.

Mrs. John Sherbak

Dies Enroute Home from Visiting in Connecticut

Mrs. John (Anne) Sherbak, 15910 Cassidy Rd., died suddenly Thursday, April 10, of a heart attack while enroute home from visiting family in Stratford, Conn.

Born Oct. 3, 1912 in Woodland, Me., she was the daughter of Paul and Anna Dudas Papin. She married John Sherbak May 6, 1935.

He preceded her in death in 1969. Following her husband's death, Mrs. Sherbak moved to Chelsea where she made her home with her daughter, Mrs. Stephen Hastings of Cassidy Rd.

Aside from her daughter, Mrs. Sherbak is survived by her mother, Mrs. Anna Papin, one brother John, and a sister, Mrs. Mary Jakupovic, all of Stratford; and four grandchildren.

She was a member of St. Mary Catholic church of Chelsea.

Funeral services were held April 11 at 1 p.m. at St. Mary's. The Rev. Fr. Philip Dupuis officiated. Further funeral services and burial were conducted April 14 at St. Cyril's Catholic church, Lisbon, Falls, Me.

Local area arrangements were made by the Staffan Funeral Home.

Robbins Fire...

(Continued from page one)

standing suffered smoke and water damage.

An exact estimate of the damage has not yet been determined.

The Robbins plan to rebuild their Trist Rd. home, which also housed the family upholstery business. They are presently looking for a furnished apartment until reconstruction on their home is completed.



WASHTENAW COUNTY LIVESTOCK ASSOCIATION officers who made arrangements for the annual banquet Saturday evening, are, left to right, front row, Harold Haessler, Ken Hieber, Ralph

McCalla, John Brooks and Ken Heath; back row, from left, Nick Heller, Herb Duible, Bill Ames, Stan Poet (president), Bill Nixon and Carl Lesser.

Stabbing Case Closed, No Charge Filed

According to the Livingston County Prosecutor, Tom Kizer, no warrant will be issued in the alleged stabbing of Terry Whitesall of Noah Rd. by Robert Push of Lima Center Rd.

The prosecutor said, "The initial investigation of the fight, which occurred at the Dam Site Inn in Hell, could not support a criminal charge."

Unless further evidence is brought before him, he said, the case is closed.

Whitesall suffered stab wounds in the neck which required 27 stitches. Dexter's sheriff's police aided the wounded man and transported him to the hospital in Ann Arbor.

Public Hearing Stated On Freer Rd. Curb, Gutter Construction

Objections to the construction of a curb and gutter along Freer Rd. and the far easterly portion of Washington St. may be voiced at a public hearing in Village Council chambers, Tuesday evening, April 29 at 7:30 p.m. All interested persons are encouraged to attend.

So play it smart—soil test now. Call your local Cooperative Extension Service office for help and information.

Softball Leagues Will Be Organized For Summer Play

Reminding managers and official representatives of Men's Slow and Fast pitch softball teams of their first meetings this Wednesday and Thursday, April 23 and 24 is Charles Waller, at whose home the meetings will be held.

Waller reported that the purpose of these first meetings is to discuss basic team fees and the basic league organization. He suggests that managers and/or official representatives call him at 475-8816, before the meetings.

Slow pitch officials will meet April 23 and Fast Pitch, April 24. Meetings will begin at 7:30 p.m. at 13682 Old US-12.

In order to become part of the 1975 program, a manager or representative must be present.

More than 20,000 persons in 120 Michigan communities take credit and non-credit courses conducted by the Continuing Education Service of Michigan State University.

FARLEY CONSTRUCTION
522 HOWARD RD.
ADDITIONS - REMODELING
REPAIRS
CONCRETE WORK
475-8265 or 475-7643

Family Film Feature Attended By 450

450 persons attended the Friday night showings of "20,000 Leagues Under the Sea," sponsored by the Chelsea Recreation Council and held in the high school auditorium. The film was the first in a series of family film features slated to come to Chelsea.

The next film will be shown on Friday, May 9. The title is yet to be announced.

With more than 41,000 students, Michigan State University is the nation's second largest single campus university. Ohio State is first.

FREE!

1/2 year of fuel for your DEUTZ

THIS MONTH ONLY

Buy any of eight models of new Deutz air-cooled diesel tractors and get direct from Deutz Corporation a check equal to the estimated cost of fuel needed for 1/2 year of average farm work—up to \$372.40, depending on model!

Deutz can make this sensational offer because the Deutz air-cooled diesel engine uses so much less fuel than competitive models.

Buy now and get this big fuel savings immediately and still more in the years to come.

PLUS \$250 CASH REBATES on Deutz D 3006-D 4006-D 5506 or D 6006—32 to 66 hp—direct to you from Deutz.

We have all the details. Come in now. Offer good only this month and subject to availability.

C. F. Braun Co.
(313) 662-9400
4175 Whitmore Lake Rd.
Ann Arbor, Mich. 48105

*Based on rated gallons per hour for average farm work and diesel fuel at 38¢ gal.

17 DAYS
Now, Thru Sat., May 3rd

SPRING SPECIALS

WHITE BEAUTY

★ **CLOTHES POSTS**

48" 4-HOOK CROSSARM, 3" O.D. x 8 1/2" MAIN COLUMN **\$10⁷⁹** REG. \$11.95

★ **CORDLESS ELECTRIC DRILL**

DRILLS 50 HOLES THRU A 2x4 ON ONE CHARGE! —RECHARGES OVERNIGHT **\$29⁹⁹**

★ **K-LUX DECORATOR PANELS**

2'x4' Reg. \$3.88 SALE **\$3.49**

2'x6' Reg. \$5.88 SALE **\$5.29**

ROUNDEL, DIAMOND, GLACIAL, & CALYPSO PATTERNS

★ **SPRED SATIN** CUSTOM COLOR-MIXED FREE

REG. \$8.50 **\$7⁴⁸** Gal. COMPARE ANYWHERE!

CHELSEA LUMBER

GAMBLES SPRING CLEAN-UP FIX-UP SALE!

GAMBLES GREATEST GARDEN TILLER VALUE!

4-HP MODEL

\$228

Powerful, yet lightweight tiller has 4-HP vertical shaft Briggs and Stratton engine, with automotive type cone clutch drive for maximum torque. Has no belts to wear out! 13" tines expand to a 24" tilling width. Adjustable depth stake, removable wheels. Start your garden now and save money!

Complete Line Tillers, Tractors and Lawn Mowers
Shop Our Lawn & Garden Center for Savings



VOLUNTEER FIREMEN HONORED annually for service to their community by the Kiwanis Club of Chelsea are members of the Chelsea Volunteer Fire Department. Pictured seated, left to right, are Claude Spiegelberg who has been with the department for 62 years, Bud Hankerd, Larry Koch, Bob Dorer and Art Paul;

standing, from left, are Dave Longworth, Bob Steele, Merle Leach, Lahmael Picklesimer, Bob Smith, Ray Sabo, Phil Roy, and Marvin Schiller. Honored, but not present for the photo, are Chief Jim Gaken, Don Alexander, Larry Adams, LaVerne Hafley, Art Grisom, Glenn Helm, and Ray Johnson.

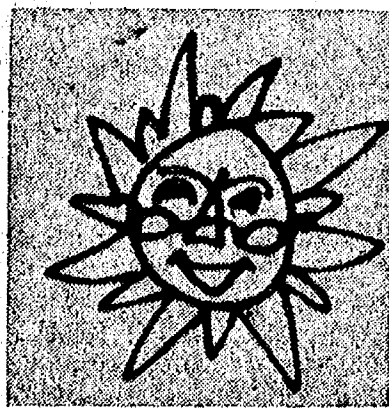


CHELSEA POLICE DEPARTMENT and their auxiliary were honored along with the Volunteer Fire Department Monday evening at the weekly dinner meeting of the Kiwanis Club. Seated in the front row, from left to right, are Officers Robert Browning, John Detling, Chief George Meranuck, Sgt. Leonard McDougall, Officer Larry Yager and Auxiliary Captain Calvin Summers. Members of the department not pictured are Officers David Peebles, Roger

Graves and Jerry Ringe. Standing, from left, are members of the Auxiliary, Sgt. Charles Winans, Officer Britten Graham, Sgt. Robert Robbins, Officers Brice Graham, Robert Bauer, and Richard Harvey (secretary), Lt. Roy Guenther, Greg Kuhl and Sgt. Don Knoll. Auxiliary members honored, but not present for the photo, are James Krichbaum, Phil Boham, Hugh Hosler, Leonard French, Norman Bauer and Mark Giffin.

GOOD FOOD AT A REASONABLE PRICE
SERVED IN A PLEASANT ATMOSPHERE

MANCHESTER'S COUNTRY KITCHEN



Open Monday thru Wednesday
6 a.m. to 3 p.m.

Thursday and Friday
6 a.m. to 7:30 p.m.

Saturday Sundry
6 a.m. to 4 p.m. 8 a.m. to 2 p.m.

232 E. MAIN ST., MANCHESTER

Home-Made Pies Our Specialty

Girls Softball Teams Open Season Today

Beginning their 1975 softball season in an away game with Napoleon this afternoon are members of the Chelsea High School Varsity and Junior Varsity Softball teams.

Both teams will play simultaneous games on different fields at Napoleon.

Five Varsity letterwomen are returning to defend the Southeastern Conference Championship title they won last year, their first in interscholastic competition.

They are senior, Char Steinaway; junior, Alice Jergens; and sophomores, Teresa Breza, Brenda Salyer and Kathy Schmitke.

Coaching the varsity squad is Ann Schaffner, who with a gleam of pride in her eye, told of this year's schedule and the hopes the girls have to win a second conference title.

Other members on the varsity team who will work together to pitch, bat, and run home a winning season are senior, Jo LaFontaine; juniors Cindy Armstrong, Carrie Goins, Teri Lutovsky, Sue Schultz, Sue Skitterhelm, and Karen Tobin. Still more are sophomores Karen Keiser, Karen Milliken, Kim Moore, Diana Pletcher and Debbie Schleicher.

Cindy Bradbury will coach the junior varsity team. Composed of both freshman and sophomores, the girls junior varsity schedule will follow that of the varsity.

Heading up the roster are sophomores Dawn Bucholz, Edie Houk, Laurie Klink, Kyle Parker, Liz Schwarze and Chris Vanderwaard. (Continued on page 40)

BIRCH BARK

A government big enough to give you everything you need is a government big enough to take everything you have.

The
John Birch Society
Box 92 Chelsea 48118

THE CHELSEA STANDARD

Second Section

CHELSEA, MICHIGAN, THURSDAY, APRIL 17, 1975

Pages 7-12

Fair Board Changes Queen Contest Rules

Chelsea Fair Board has been very busy planning the 1975 Fair. Many events are being planned from Pony Pulling to Four-Wheel Drive competition to Demolition Derby to Tractor Pulling to a Small Animal Farm Display for children.

The Fair Board, in response to the concerned CHS students' editorial have passed the following rules for the Chelsea Fair Queen Contest:

1. All Fair Queen candidates must have been enrolled in the spring term of the local area school districts prior to the fair. 2. There shall be a Fair Queen and a runner-up to be selected by the judges. A Miss Congeniality shall be chosen by the contestants. The Fair Board expressed their appreciation to the concerned students for bringing their suggestions for a better fair to their attention. They would appreciate any new ideas from the community to make the Chelsea Fair the best Community Fair in Michigan.

Scholarship Application Deadline Near

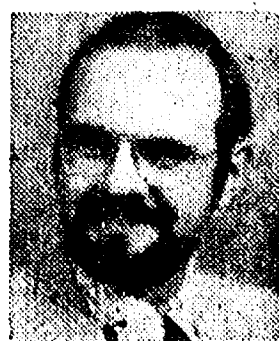
Seniors at Chelsea High school who will graduate in June and plan to continue their formal education may apply for funds from the Chelsea Scholarship Fund.

Counselor George Bergman reports that a May 1 deadline has been set for the completion of scholarship applications. Those seniors who are interested may pick up applications in Bergman's office.

Bergman added that sons and daughters of UAW members may apply through the local steward's office for a UAW scholarship.

You and Your FAMILY

... one of the reasons we're in business ... with life insurance that helps your family when you die, you and your family in financial emergencies or you when you retire. Check the facts



DAVE ROWE

107 1/2 S. Main
Chelsea, Mich.
Ph. 475-8065

**FARM BUREAU
INSURANCE
GROUP**

Farm Bureau Mutual • Farm Bureau Life
Community Service Insurance • Community Service Accident

Baseball Hopes Hinge On Pitching Success

Baseball Coach, Phil Bareis placed this year's prospects for a successful 1975 ball season on "our big question mark ... pitching." It all "depends on the ability of Chelsea pitchers to handle the other teams."

Apparently, pitching was no problem, for Bill Clark, who pitched the opening game of the '75 season against Pinckney on Chelsea's home diamond, Friday, April 12.

Chelsea ball players won the game in the final innings with a score of 8-7.

Tied after the first inning, 2-2, Chelsea built up a lead of five runs over the next three, scoring three in the third on five hits and a walk; only to come up against a charge by Pinckney in the fifth and sixth.

Todd Ortbring was able to subdue that charge when he fielded a ground ball, stepped on second for a force there and threw to first to complete the double play.

Despite Coach Bareis' concern about pitching, Bill Clark went the full seven innings, striking-out nine, allowing only six hits and eight walks. Clark hit a triple himself; one of two big plays of the day. The other was a double hit by Paul Woods.

The team began practice March 1.

Returning players from the '74 season are Bill Clark, pitcher; Todd Ortbring, pitcher and infielder; Tres MacCollum, outfielder; Mark Pennington, outfielder; and Paul Wood, catcher; all seniors.

Returning juniors are outfielder Tim Reed; infielder and pitcher Randy Guenther; and infielder Joel Sprague.

Players up from junior varsity include sophomores, John Toon, outfielder; Dale Shoenberg, infielder; Don Nadeau, catcher; and Anthony Houle, infielder.

New seniors, who did not play last year are Steve Figg, Don Murray, Randy Musbach and Dan Williams.

One freshman, Kurt Owings will play with the varsity squad as a pitcher.

According to Bareis, the boys have good speed, and are sound on hitting and defense.

Next game will be in the Tecumseh tournament this Saturday.

Telephone Your Club News
To 475-1371.

**FREE
CIRCUS
TICKETS
- TO -
WANT AD
READERS**

See
Details
on
Page 9

Fire, Police Departments Entertained

Chelsea Volunteer Fire Department and the Village Police Department, and their Auxiliary were honored Monday evening at a weekly dinner meeting of the Chelsea Kiwanis Club.

Featured speaker was Captain Robert Conn of the Ann Arbor Police Department. Conn spoke to the uniformed men and the Kiwanians on "The Man in Uniform."

Kiwanians make a practice of honoring men in both departments annually in an expression of appreciation for their services.

THE BIG OUTFIT BLAZER STYLE!



The updated blazer can add fresh dimension to so many sporty outfits. The easy shape has its good looks accentuated by new details and smooth lines. A truly versatile style by Curlee in a light 'n lively array of colors and patterns that go great with just about everything.

\$59.50 and \$75.00

Open Monday thru Sat., 8:30 to 5:30; Friday Till 8:30
OPEN ALL DAY THURSDAY

STRIETER'S MEN'S WEAR
"The Place To Go for Brands You Know"

RICK'S MARKET

Just North of Chelsea on M-52 "The Friendly Store"

Phone 475-2898

COCA-COLA ... 16-Oz. No-Return Bottles **8 pac \$1.49**

CHEESES

CREAM HARVARTI ... lb. **\$1.99**

MONTEREY JACK ... lb. **\$1.59**

**SPARTAN
BREAKFAST TREAT** ... 1/2 gal. **73¢**

BY POPULAR DEMAND

We Are Once Again Making Our Famous
BAR-B-Q CHICKEN and SPARE RIBS

OVEN FRESH
ENRICHED BREAD ... 2 1 1/4-Lb. Loaves **89¢**

OVEN FRESH
OLD STYLE BREAD ... 1 1/4-Lb. Loaf **49¢**

OVEN FRESH
PECAN TWIRLS ... Pkg. of 8 **59¢**

The Freshest Baked Goods in Chelsea
WITH THE HOME-MADE TASTE OF QUALITY

★ **ROLLS OF ALL KINDS** ★ **DONUTS, TOO**
★ **AND COFFEE CAKES FOR YOU**

... m-m-m-m good and fresh!

Ads
Taken
Till 1 p.m.
Tuesday

Advertise the Action Way! The Want Ad Way!

Just
Phone
475-1371

WANT ADS	WANT ADS	WANT ADS	WANT ADS	WANT ADS	WANT ADS	WANT ADS	WANT ADS
<p>The Chelsea Standard WANT AD RATES PAID IN ADVANCE—All regular ad- vertisements, 10 cents for 25 words or less, each insertion. Count each word and figure for more than 25 words add 5 cents per word for each insertion. Third day or less num- ber add 50 cents per insertion. LARGE RATES—Same as cash in advance, with 25 cents bookkeeping charge if not paid before 1 p.m. Tues- day preceding publication. Pay in ad- vance and each of stamps and save 10 cents. DISPLAY WANT ADS—Rate \$1.40 per column inch, single column, width only 3-point and 4-point light type. No borders or boldface type. Minimum 1 inch. CARDS OF THANKS or MEMORIALS Single paragraph style, 15¢ per line for 50 words or less; 3 cents per word beyond 50 words. COPY DEADLINE—1 p.m. Tuesday week of publication. GARDENS PLOWED and worked. Lawn seeded and mowed. R.R. 475-8972.</p>	<p>PATCHING AND PLASTERING Call 475-7488.</p> <p>POWER EQUIPMENT Rototillers WE HAVE THEM! —SIMPLICITY —ARIENS —GILSON —GARDENMASTER 3 to 8 h.p. Used Equipment 10 h.p. Simplicity Landlord tractor with 42" rotary mower and 46" side mounted sickle mower. 6 h.p. Simplicity Yeoman tractor with 32" mower and 42" snow blade. See us for a better deal on new tractors and power mowers.</p> <p>Chelsea Hardware Phone 475-1121</p> <p>Sparrow Real Estate (517) 522-8249 Grass Lake: 2 five-acre parcels, \$7,500, \$8,000.</p> <p>Floyd Fowler</p> <p>Mary Wolter Real Estate 7421 Dexter-Pinckney Rd. 426-8188</p> <p>JACKSON RD. between Zeeb and Wagner, 2-story 3-bedroom home on two landscaped lots, large trees, barbecue, garage, side drive, din- ing room, dining room, kitchen, di- vided basement with rec room and utility, steam heat, incinerator. HILLAND LAKE-FRONT ranch, 5- bedroom home, walk-out lower level with rec room, natural gas barbecue, garage, side drive, din- ing room, kitchen, two bedrooms and bath. All carpeted. Beautiful view of lake, \$40,000. BUILDING SITE—Almost 5 acres, good location, corner of Liberty and Parker near Zeeb Rd. STOCKBRIDGE, AREA—Remodel- ed 3-family income property, all carpeted. Income \$430 per month. Good investment at \$42,500. PORTAGE LAKE-FRONT COT- TAGE—3-bedroom, small but neat, small lot, good beach. Only \$15,000. PATTERSON LAKE PRIVILEGES 3-bedroom summer cottage, pri- vate area near Univ. camp. Small lot, \$10,000. IDEAL RETIREMENT or starter home for young couple—Mobile home on 3/4 acre with trees, black top road, Pinckney-Gregory area. 2-bedroom, large 2-car garage, 30 ft. screened patio, hot water heat, newly carpeted, excellent condi- tion, flowing well, thousand gallon septic. \$13,000.</p> <p>Mary Wolter Real Estate 7421 Dexter-Pinckney Rd. 426-8188</p> <p>Richard Slater</p> <p>HOUSE WANTED—By two respon- sible working adults. We need a 2-3 bedroom house where well- trained pets and a garden are wel- come. Needed by May 1. Excellent references available. Please call Susan Fuhrmann, 663-4145 days; (517) 522-8672 eyes.</p>	<p>FARM WORK WANTED—15-year old boy with some farm experi- ence, would like farm work after school, week-ends and during sum- mer. Call 475-1091.</p> <p>Gardeners Supply Headquarters —VEGETABLE & FLOWER SEEDS —GARDEN & LAWN FERTILIZERS —PEAT MOSS —DICONURE —DEHYDRATE COW MANURE —ORGANITE —PEAT MOSS —SPRAY MATERIALS —DAHLIA BULBS —GLADIOLI BULBS —CLEMATIS —CUSHION MUMS —CARNATION PLANTS —FOXGLOVE —CANTERBURY BELLS —STRAWBERRY PLANTS —POTTING SOIL —POULTRY NETTING —LAWN SWEEPERS —POWER MOWERS</p> <p>Chelsea Hardware Phone 475-1121</p> <p>The Talk of the Carpet Industry CABIN CRAFT'S LOWER PLACE A \$10.95 look for \$6.95 A perfect combination of texture and color.</p> <p>Merkel Home Furnishings FROM wall to wall, no soil at all on carpets cleaned with Blue Lustre. Rent electric shampooer, St. Chelsea Hardware.</p> <p>Dixie Lee Wenk</p> <p>All Insurance Needs In the convenience of your own home — or mine</p> <p>N. H. Miles, Allstate Call GR 5-8334 after 6 p.m.</p> <p>GEORGE W. SWEENEY HEATING Licensed Contractor Furnaces, air conditioning, and sheet metal work. Phone 475-1867</p> <p>J. R. CARRUTHERS LICENSED RESIDENTIAL BUILDER CUSTOM HOMES ADDITIONS/FIREPLACES PATIO ROOFING/SIDING/REPAIRS 475-7234 CHELSEA</p> <p>KNAPP SHOES For Cushion Comfort Robert Robbins 475-7282</p> <p>Wayne Van Wald</p>	<p>FOR RENT—Fair Service Center for meetings, parties, wedding receptions, etc. Weekdays or week-ends. Contact John Wellnitz, phone 475-1518.</p> <p>UP TO \$2,000 TAX CREDIT These Homes Qualify: ON 1 ACRE—Brand new 3-bedroom ranch, easy access to I-94, 11 baths. Extra large kitchen, fully equipped. Full basement with large windows. \$37,500. 4-BEDROOM COLONIAL—On a corner lot in Chelsea Village. Lovely large family room with fireplace, good modern kitchen, 2 1/2 baths. Basement and attached garage. SUPER BUY—For economy mind- ed family. 4-bedroom home with 1 1/2 baths, family room. Convenient Village location. Only \$39,900. SPLIT LEVEL—Solidly built home with 3 bedrooms and 1 1/2 baths. Fireplace, space for a rec room. Attached garage. \$40's.</p> <p>Acreage 10 ACRES—In Dexter Schools. Good wooded site. 2 ACRES—Waterloo area, Chelsea Schools, \$7,500. LYNDON TOWNSHIP—Several building sites, all over 2 acres. From \$6,500 up. LAKEFRONT—Beautiful 7-acre building site near Hell. Wooded hillside spot. 10 ACRES—Rolling site in Chelsea Schools, close to town.</p> <p>ROBERT H. THORNTON JR. PC REALTOR CHELSEA 323 S. Main St. 475-8628 John Pierson 475-2084 Helen Lancaster 475-1198 Bob Riemschneider 475-1468 Mark McKernan 475-8424 Bob Thornton 475-8857</p> <p>Headquarters for RED WING WORK SHOES Foster's Men's Wear</p> <p>Cindy Beauchamp</p> <p>ANN ARBOR—THE ANTIQUES MARKET, SUNDAY, April 20, 5055 Saline-Ann Arbor Rd., Exit 175 of I-94, 8 a.m.-5 p.m. Admis- sion \$1.00. FEATURING COLLEC- TIONS: FLO-BLUE incl. service pieces, FINEST GLASS com- potes, goblets, tumblers, whiskey fasters, HISTORICAL FLASKS, STOPPERS, SOUVENIR SPOONS (over 900) rare and illustrated BOOKS; STONEWARE; INDIAN baskets, seed and glass beads; signed TIFFANY, HANDEL & PAIRPOINT lamps, CANTON, SPATTERWARE, PETER, & SHAKER; TOOLS incl. coopers signed w-burl; FURNITURE incl. many CANE-SEATERS in mah- ogany and cherry; TABLES incl. mahogany sewing & breakfast cherry HEPPLEWHITE, Pa. work, pine; CHESTS walnut & curly maple, cherry, walnut CHIP- PENDALE; DENTAL cabinet; 3- pc. VICTORIAN walnut set; PINE pieces, water bench, dry sink, hanging corner cupboard; CHAIRS incl. many WINDSORs signed fastback, bow back, hoop back; sets, fiddle back plank seat; CLOCKS incl. small walnut tall case. EVERYTHING GUARAN- TEED.</p> <p>WANTED—2-bedroom furnished apt. Needed for three months for small family rebuilding after fire. Call 475-1371 or reply Box AP-17, in care of Chelsea Stan- dard.</p> <p>FOR SALE—Trombone. Ph. 475- 2140.</p> <p>Pickup Caps & Covers For all makes and models. Stan- dard and custom-designed. Stan- dard \$147.00. Free brochure.</p> <p>PIONEER COACH MANUFACTURING CO. 3496 Pontiac Trail Ann Arbor, 668-8785</p> <p>WALLPAPER and FABRICS Largest selection in area. Play area for children.</p> <p>D. E. HOEY and SONS 3515 Broad St., Dexter Ph. 426-8119</p>	<p>MANCHESTER—By owner, 3-bed- room ranch, 2 baths, family room with fireplace, finished rec room and basement, and more, on one acre. Phone 428-7838.</p> <p>A Few New '74's Still Available at Exceptionally Low Prices! Quality Used Cars '75 CORDOBA Demonstrator, Fully equipped. SAVE! '74 VALIANT 4-dr. sedan, 225, auto., p.s., rust-proof, 15,000 miles. \$2795 '72 CHALLENGER, 318, auto., p.s., radial tires, 26,000 miles. \$2295 '72 FORD F-250 pick-up, 360, 4- speed. \$1895 '72 FORD 1/2-ton pick-up, 360, auto., p.s., air cond., tinted glass, Explorer pkg. \$2495 '71 DART Swinger, 318, auto., p.s., low mileage. \$1795 '70 DODGE Polara Custom 4-dr., 318, auto., p.s., p.b., air cond. \$1195 '68 VALIANT Signet 4-dr., 273, auto., p.s., p.b., air cond., vinyl top. \$995 '67 IMPERIAL 4-dr., V-8, auto., p.s., p.b., power windows, pow- er seat, air cond., AM-FM, TNT steering. An exceptionally fine car. \$1895 '67 BUICK LeSabre 4-dr. Excellent transportation. \$495</p> <p>Transportation Specials High-mileage cars to be sold at wholesale. '72 DODGE Polara 4-dr. sedan, V-8, auto., p.s., p.b., air cond., ra- dial tires. \$1895 '69 PLYMOUTH Belvedere coupe, 225, auto. \$395 '69 FORD station wagon, V-8, auto., p.s., p.b., air cond. \$395 '68 CHEVY Impala station wagon, V-8, auto., p.s. \$495 '67 FORD Country Squire, V-8, auto., p.s., p.b., air cond. \$395 '62 CHEVY 4-dr., V-8, auto., p.s. \$395</p> <p>Village Motor Sales, Inc. IMPERIAL - CHRYSLER DODGE - PLYMOUTH Phone 475-8661 1185 Manchester Rd., Chelsea Hours: 8 a.m. to 6 p.m. Tues. thru Fri. Until 9 Monday 9 a.m. to 1 p.m. Saturday</p> <p>Funk's G SEED CORN , and BALER TWINE All maturity dates of 95% germi- nation on hand for pick-up or delivery. Call Harold Trinkle & Sons 9970 Trinkle Rd., Dexter Ph. 475-8992</p> <p>Fireplace Builder Field stone mason, block and brick mason, tuck pointing. FREE ESTIMATES Call 475-8025 after 3 p.m.</p> <p>Patrick Grammatico Richard J. Fahey</p> <p>UAR RENTAL by the day, week- end, week or month. Full insur- ance coverage, low rates. Call Lyle Christwell at Palmer Motor Sales, 475-1301.</p> <p>MAUSOLEUMS * MONUMENTS BRONZE TABLETS * MARKERS</p> <p>BECKER MEMORIALS 6933 Jackson Road ANN ARBOR, MICHIGAN</p>	<p>UPHOLSTERING—Cane and rush. Ph. 761-3975.</p> <p>Charles Cox</p> <p>Special of the Week 1974 OLDS CUTLASS SALON 4-dr. sedan (air cond.) \$3995</p> <p>USED CARS 1973 BUICK Century 4-dr. sedan \$2595 1973 PONTIAC Catalina 4-dr. hard- top, 31,000 miles. \$2295 1972 CHEVROLET Caprice 2-dr. hardtop, air cond. \$2595 1972 BUICK Sportswagon, air cond. 24,000 miles. \$2795 1972 BUICK LeSabre 4-dr. hardtop, air cond. \$2295 1972 DODGE Charger 2-dr. hard- top, air cond. \$2195 1970 BUICK Estate Wagon, 3-seat, air cond. \$1395 1970 BUICK LeSabre 4-dr. hard- top. \$1295 1969 FORD LTD 4-dr. sedan, air cond. \$995 1968 PLYMOUTH Fury 2-dr. hard- top. \$195 1967 PLYMOUTH Fury Wagon</p> <p>Mon. - Tues. - Wed. - Fri. 8:00-5:30 Thurs., 8:00-9:00 Sat., 8:00-3:30</p> <p>SPRAGUE Buick-Olds-Opel, Inc. Phone 475-8664 1500 S. Main St., Chelsea</p> <p>HELP WANTED—Mature lady to work kitchen-dining room. Sev- eral shifts available: lunch, din- ners, week-ends. Apply in person. Manchester's Country Kitchen. 45</p> <p>HORSE CARE AVAILABLE Sharon Hills Ranch. Reasonable rates. Ph. 428-7558.</p> <p>GAR - NETT'S Flower & Gift Shop Your Friendly Florist 112 E. Middle St., Chelsea</p> <p>PHONE 475-1400</p> <p>Funeral Flowers Wedding Flowers Cut Flowers (arranged or boxed) Potted Flowering Plants Green Plants - Corsages</p> <p>WE DELIVER</p> <p>CLOGGED SEWER Reynolds Sewer Service We Clean Sewers Without Digging Drains Cleaned Electrically FREE ESTIMATES 2-YEAR GUARANTEE Phone Ann Arbor NO 2-5277 "Sewer Cleaning Is Our Business— Not a Sideline"</p> <p>ALCOA ALUMINUM SIDING SPECIALIST—Since 1938. All wood covered. Everything for out- side beauty and insulation. Wil- liam Davis, 663-6635.</p> <p>Kay Heller</p>	<p>WANTED—Mature lady for retail clerk, in Chelsea. Part-time. State exp. and wages required. Write Box AP-10 in care of Chelsea Standard.</p> <p>Paul Frisinger</p> <p>We Invite You to Visit These OPEN HOUSES From 1 to 5 SUNDAY, April 20th</p> <p>53 BUTTERNUT COURT—Lane- wood, beautiful 3-bedroom ranch home, excellent location. 7690 WERNER ROAD—One acre, all-brick ranch home, 4 bed- rooms. 638 FLANDERS STREET—Im- maculate, 3-bedroom ranch, large lot with trees. 611 FLANDERS STREET—Excel- lent family home, 2 full baths, 3 bedrooms, \$36,900.</p> <p>ALL HOMES OPEN FROM 1 TO 5 SUNDAY</p> <p>CHELSEA</p> <p>PRICE, DESIGN & QUALITY— 3-bedroom ranch, dining area, family room, 2 baths, full base- ment, 2-car garage, 1 acre, Chelsea schools, \$49,900. LIGHT & AIRY is the living room and dining room in this 3-bed- room Cape Cod in the Village, of Chelsea. 2 baths, close to high school, \$36,900. IMMACULATE RANCH—3 bed- rooms full basement, extra deep lot with woods, near high school, central air, quality construction. LET US SHOW YOU a great way to live—1,800 sq. ft., 3 bedrooms, dining area, family room, finished basement, brick wall fireplace. ROMANTIC COUNTRY LIVING— 4-bedroom executive ranch, din- ing room, family room, game room, 2 fireplaces, 2-car attached garage. Central air, heated swim- ming pool, heated 50x40 shop. Frontage on Pink's Lake, approx. 3 acres. TRY YOUR HAND at sod busting —115 acres, barns, outbuildings, Centennial farm home, 4 bed- rooms, Chelsea schools.</p> <p>FRISINGER REALTORS Chelsea 475-8681</p> <p>Evenings— Bob Koch 426-4754 Paul Frisinger 475-2621 Burke Fitzgerald 878-6603 Herman Koenn 475-2613</p> <p>2 ROLLS Armstrong Fancy Free cushioned vinyl inlaid. Regular \$9.95, sale \$4.85. Merkel Home Furnishings.</p> <p>William Stierle</p> <p>Sand Gravel</p> <p>KLINK EXCAVATING Bulldozer - Backhoe Road Work - Basements Trucking - Crane Work Top Soil - Demolition Drainfield - Septic Tank Trenching, 5' up</p> <p>Industrial, Residential, Commercial CALL 475-7631</p> <p>PAINTING, interior and exterior, reasonable rates, with good re- ferences. For free estimates call 426-8395, after 4 p.m.</p> <p>Soft Water The Easy Way Rent a fully automatic water con- ditioner, with option to buy.</p> <p>Lindsay Soft Water Ph. 761-0050</p> <p>ESTATE SALE Furniture, electric stove, house- wares, glassware, knick knacks, misc. items. House also for sale. Phone, days, 971-3539; after 3:45 p.m., 475-1807.</p> <p>Patrick Raney</p>	<p>HOME REMODELING, complete interior work, including panel- ing, papering, and painting. Call 475-2265.</p> <p>Daniel Ellenwood</p> <p>FOR SALE—'72 Honda 175. Ph. 475-8820.</p> <p>10% OFF ON ALL PRICES UNTIL APRIL 26 BIG SAVINGS BY GROWING YOUR OWN Plant 6 dwarf-size fruit trees in as little as 10x20 ft. Get full size fruit. Must order by April 26 for Spring planting.</p> <p>Elson Bettner (313) 475-9223 15700 Cassidy Rd. Grass Lake, Mich. 49240</p> <p>STARK BRO'S. Nurseries and Orchards Co.</p> <p>Real Estate One Of Washtenaw 1196 M-52 Chelsea, Mich. 48118</p> <p>We Make Things Simpler For You!</p> <p>CAVANAUGH LAKE HOME—132' lake frontage, 1 1/4 acre lot with many mature trees, 4 bedrooms, 2 1/2 baths, fireplace in large living room & master bedroom overlooking lake. New kitchen, walk-out basement. Low maintenance alu- minum siding. \$64,900. Call to see any time.</p> <p>OWNER ANXIOUS TO SELL—3- bedroom home on 3 acres. Chelsea schools, close to I-94. Must be seen to be appreciated. \$32,500. Call today!</p> <p>10 ACRES located north of Chel- sea. Stream, partly wooded, Chel- sea schools. Excellent terms. \$17,500.</p> <p>CONVENIENT TO E-WAY—Qual- ity built, 3-bedroom ranch, full basement, 2 fireplaces, attached garage. 3.79 acres and garden spot. \$56,900.</p> <p>YOUR 5% TAX REBATE will help you buy this new 3-bedroom home with lake access on beautiful Joslin Lake. Under \$30,000.</p> <p>DAYS - 475-8683</p> <p>Evenings— Gil Harrell 485-3976 Tina Cotton 475-2637 Bob Myrmei 428-6388 Ted Picklesimer 475-8174 Ed Coy 426-3235 Al Kleis 475-7322 Paul Erickson 475-1748</p>

**Service
Counts**
above all
without regard for
price
whether moderate
or low.

Staffan Funeral Home
"Funeral Directors for Four Generations"
134 PARK STREET PHONE GR 5-4417

YES
WE ARE MAKING
LONG-TERM FARM
REAL ESTATE
LOANS

SEE US
**Federal
LAND BANK**
Association

P. O. Box 1006
Ph. 769-2411 8545 Jackson Rd.
Ann Arbor, Mich. 48108

**WALLPAPER
and FABRICS**
Largest selection in area.
Play area for children.

D. E. HOEY and SONS
3515 Broad St., Dexter
Ph. 426-8119

**BECKER
MEMORIALS**
6933 Jackson Road
ANN ARBOR, MICHIGAN

SCHNEIDER'S GROCERY
CHOICE MEATS - FINE FOODS

16-OZ. NO-RETURN BOTTLES Coke 8 pac \$1.49	10-LB. BAG MICHIGAN Potatoes 59c
16-OZ. NO-RETURN BOTTLES Tab 8 pac \$1.39	LAND O' LAKES Butter . 1-lb. pkg. 85c
GALLON JUG Lo-Fat Milk . . . \$1.09	12-OZ. PKG. ROSE-ETTE FROZEN Hash Browns 2 for 49c
MCDONALD'S Orange Juice 1/2 gal. 69c	LARGE 13 1/2-OZ. Cool Whip 75c
1-LB. PKG. ECKRICH Beef Franks 89c	ICE CREAM BARS Carnival . . 12 pac 79c

**121 S. MAIN ST.
PHONE 475-7600**

**Your Store for
Alexander & Hornung's
Smoked Meats**

**We Accept
U.S.D.A.
Food Coupons**

WANT ADS

WANT ADS

WANT ADS

WANT ADS

WANT ADS

WANT ADS

- YOUNG -

We list and sell lake, country and town properties. Eugene Young, Real Estate & Builder, 878-3792, 11596 Dexter-Pinckney Rd., Pinckney 48169. x341tf

William Balliet

WE BUY vacant land, lots, acreage, or farms. Cash or terms. Washenaw Active Homes. Call 485-7845. x231tf

Custom Built Homes

Q—h! We Remodel too

U—can count on us

N—o Job Too Small

T—rim Inside & Out

R—ough-in Only If

Y—ou Want to Finish

S—iding Aluminum, 5" Gutters

I—mmediate Attention

D—ALE COOK & CO.

E—stimates, Free

BUILDERS

Please Call

475-8863

DALE COOK

General Carpentry

Also Repairs

Chelsea Ph. 475-9209

Basement Roomful

OVER 150 PIECES

ALL 1/2 PRICE Or Less

DISCONTINUED - DAMAGED

TRADE-INS

Dining tables, dining chairs, end tables, lamps, upholstered chairs, sofa, loveseat, rockers, recliner, floor lamps, dressers, chests, desks, hutch tops, cabinet, head-boards, bed, mattresses, boxsprings, pictures, coat rack, TV stand, clocks, night stands.

MERKEL Home Furnishings

FOR SALE—1971 Capri, new tires, good running order, \$1,400. 1970 Ford Maverick, stick shift, 6-cyl., new tires, \$1,000. Ph. 475-1509 after 7 p.m. x44

GUITAR LESSONS—\$2.50 half hour with experienced instructor. Marianne Hoover. Area code 517-596-2502 persistently. x46

FOR SALE—Two Pinto horses, broken to saddle and harness. With harness, wagon, saddles, bridles optional. Ph. 475-2594. x46

GARAGE SALE—Several families, clothing, household items, toys and more. Thursday to Sunday, April 17-20. 13410 Old US-12 East, Chelsea, 9:00 to 5:00. x44

FOR REAL DOLLAR SAVINGS be sure and see us before you buy any new or used car. Palmer Motor Sales, Inc. Your Ford Dealer for over 50 years. x21tf

Sande's Texas Tack

12005 SCIO CHURCH RD.

CHELSEA, MICH.

475-2596

Complete line of Western horse equipment. Also, boots, hats, purses, and wallets.

OPEN EVERY DAY, 9-9

10% 4-H Discount

Terrence O'Hagen

WANT TO RENT—Hay and corn ground for this season. Call 475-2771. x281tf

FOR SALE—Indian cents, postcards, books, foreign coins, Australian opals, and other articles. Lawrence E. Guinan, 1571 Sugar Loaf Lake. Call 475-2317. x371tf

WEDDING STATIONERY—Prospective brides are invited to see our complete line of invitations. The Chelsea Standard, Ph. 475-1371.

REDUCE EXCESS FLUIDS with Fluidex tablets, only \$1.89 at Chelsea Pharmacy. x49

Complete

Body Repair

Service

Bumping - Painting

Windshield and Side Glass

Replacement

Free Pick-up & Delivery

Open Monday Until 9

CONTACT DON KNOLL

FOR FREE ESTIMATE

Village

Motor Sales, Inc.

IMPERIAL - CHRYSLER

DODGE - PLYMOUTH

Phone 475-8661

1185 Manchester Rd., Chelsea

Hours: 8 a.m. to 6 p.m.

Tues. thru Fri. Until 9 Monday.

9 a.m. to 1 p.m. Saturday

Ronald F. Gentner

GUTTERS

SEAMLESS aluminum eaves-troughs installed. White and brown. Call Wilson Metal Shop, Manchester, 428-8468. x81tf

McCulloch

Portable Generators

Chain Saws

WE SELL SERVICE,

SHARPEN AND TRADE.

Chelsea Hardware

Gerald Quackenbush

NOW

Full Time

Complete

Body Shop

Service

Stop in For An Estimate

PALMER FORD

222 S. Main St.

475-1301

Larry Nix

PIANO TUNING, Chelsea and area. Facilities for reconditioning and rebuilding. Used piano sales; reconditioned grands and verticals. E. Ecklund, 426-4429. x501tf

EVINGER REAL ESTATE, Alpine St., Dexter. Phone 426-8518. x181tf

SEE US for transit mixed concrete. Klumpp Bros. Gravel Co. Phone Chelsea 475-2530, 4920 Loveland Rd., Grass Lake, Mich. x404tf

Howard McDonald

TRAVEL TRAILERS—13-ft. and up; 10x55 ft. trailers. John R. Jones Trailer Sales, Gregory, Mich. Phone 498-2655. x43tf

ELECTRICAL WIRING of all types New and rewiring. Ph. 426-4855. x201tf

FOR RENT—American Legion Hall. \$50. Call 475-1824. x01tf

Farmers - Homeowners

Campers

Here is low-cost blackout protection.

End your power failure worries now!

Tractor-driven or air-cooled electric alternators to meet your requirements.

Take electric power with you.

We have Pinco Power Plants to fit your needs.

Call

Heller Electric

Evenings at 475-7978

Thomas Kemp

YES

We have homes that qualify. Receive up to \$2,000 from Uncle Sam by purchasing any existing new WEBER Home.

CALL TODAY

475-2828

BOB'S LOCK & KEY

Complete Locksmithing Service

Commercial, Residential,

Automotive

Luggage locks repaired.

475-9071

Chelsea

Rod & Gun Club

DANCE

Saturday, April 19

9 p.m. - 1:30 a.m.

Music by Jimmy Romine

and the Lakers

\$8.00 per couple.

Buffet lunch - Snacks - Set-ups

Ice furnished.

PUBLIC INVITED.

For tickets, call Gary Bentley,

475-8762 or Roger Davis, 475-7187.

x44

'68 CHEV 2-DR.

'67 CHEVELLE 2-DR.

TRUCKS

WE NEED USED TRUCKS

'71 RANCHERO

V-8, automatic

'62 CHEV 1/2 TON

Pick-up

\$1595

\$295

Weldon Johnson

FOR SALE—10-speed Schwinn, straight Schwinn. Ph. 475-7317. x44

BRICK MASON wants brick and stone work, fireplaces, veneers, homes, cement sidewalks, and driveways. Free estimates. Call 764-4463. x45

GARDENS PLOWED and worked. Lawns seeded and mowed. Ph. 475-8572. x46

WANTED—Ford tractor, older model. Must be repairable. Phone 475-2092 after 6 p.m. x45

WANTED TO RENT—Small house in Dexter, Chelsea, Pinckney area. Must be situated in isolated wooded area. Ph. 1-483-3369. x45

WILLIAMSON HEATING and Cooling, sheet metal work. Licensed and insured. Steele & Son, (313) 475-2022 or (517) 596-2951. x41tf

SEAMLESS ALUMINUM eaves-troughs, roofing, siding, and carpentry work of all kinds. Experienced installers. All work guaranteed. For free estimate, call R. D. Kleinschmidt Co., 426-8836. x31tf

CARPENTRY WORK and repairs, also roofing and siding. Call Mr. Coburn, 475-2883. x401tf

LECITHINI Vinegar! B61 Kelp! Now all four in one capsule, ask for VB6+, Chelsea Pharmacy. x49

KETO USED CARS

8020 GRAND - DEXTER

426-4535

CARS BOUGHT AND SOLD

QUALITY ROOFING—Roofing, siding, repairs. Free estimates. 428-3185 or 971-4339. x151tf

A fine selection of

New and Used Cars

for immediate delivery

Harper Pontiac

Sales & Service

475-1306

Evenings, 475-1606

Norman Colbry

CUSTOM

BUILDING

LICENSED & INSURED

FREE ESTIMATES

TOTAL

CONSTRUCTION

SERVICES

—Residential, commercial and industrial

—Garages

—Remodeling - Additions

—Aluminum Siding

—Roofing

—Trenching

SLOCUM

CONTRACTORS

& BUILDERS

Serving Washtenaw County

For Over 20 years

20700 OLD US-12

CHELSEA

Phone 475-8321 or 475-7611

221tf

Walter Haller

VACUUM CLEANERS

Authorized Electrolux

sales and service.

James Cox

428-2931, or 428-8686

118 Riverside Dr., Manchester

481tf

MUNITH AUCTION—100 Main St.,

Munith, Mich. Auction every

Sunday, 6 p.m. Danny Fleming

auctioneer. x121tf

STOCKBRIDGE, 13 acres, commercial, on M-52. (517) 851-8144. x51tf

D&G Allen Excavating

Septic Tanks and Drainfields

Back Hoe and Dozing

Sand, Gravel and Topsoil Hauled

Phone (517) 851-8386

or (517) 851-8278

431tf

Walter Inglis

SPRING

"CASH"

SALE

15% OFF

While Supply Lasts

Spruce up for summer with vanities, tops, mirrors, medicine cabinets, seats, shower curtains, shower doors, sinks, stools, and bath boutique items.

Come See & Save!

April 1st thru 30th

Hilltop, Inc.

1414 S. Main St.

Chelsea - 475-2949

x45

WANTED—Child-care needed for 2 boys in our home or your home. Phone 475-8363. x44

FOR RENT—Apt., 4-rooms, one bedroom, adults only. Security deposit required. 19200 M-52. Ph. 475-2523. x11tf

FOR SALE—Anyone interested in snare drum, carrying case, and upright practice pad. Price negotiable. Phone 475-1220. x11tf

HOUSE WANTED TO BUY—Preferably 4-bedroom in or near Chelsea. Ph. 475-1791. x11tf

NEED A ROOF? Call Toth Building & Remodeling, (313) 498-2178. x11tf

Automotive

Rust Proofing

Cars and Trucks

Village

Motor Sales, Inc.

IMPERIAL - CHRYSLER

DODGE - PLYMOUTH

Phone 475-8661

1185 Manchester Rd., Chelsea

Hours: 8 a.m. to 6 p.m.

Tues. thru Fri. Until 9 Monday.

9 a.m. to 1 p.m. Saturday

211tf

SECURITY

GUARDS

Chelsea, Manchester

Whitmore Lake areas.

Phone 761-5315

for appointment,

or apply at

290 S. Wagner Rd.

Ann Arbor

SANFORD SECURITY SERVICE,

INC. x451tf

TV REPAIR and service. House

calls. Free tube testing. Antennas

installed and repaired. Free

estimates. Barry J. TV, 8071 Main,

Dexter, 428-8191. x181tf

CAR & TRUCK LEASING. For

details see Lyle Christwell at

Palmer Motor Sales, 475-1301. x01tf

BUILDERS—House and barn

roofing, all types of roof repair,

aluminum storm windows and

doors, aluminum siding and

gutters, awnings, porch enclosures,

garage and room additions, cement

work. Call Joe Hayes for

free estimates, Manchester 428-

8520. x161tf

William Elmore

FOR SALE—'69 Chrysler Newport.

Good condition, air, \$900 or best

offer. 475-8496 after 5:30 p.m. x48

FOR RENT—2-bedroom upper.

Adults only. No children. No

pets. Ph. 475-7958. x44

FOR SALE—'73 Suzuki 250. Good

condition. Call 428-8388. x45

FOR SALE—Well-trained Appa-

loosa mare. Experienced riders

only. 475-2288, 9 a.m. to 2:30 p.m.,

or after 5 p.m. x44

Robert Draper

FREE PUPPIES—German Shep-

herd, Collie and Blue Tick mix-

ture. Ph. 475-7684. x44

FOR SALE—Noblette clarinet,

good condition. Ph. 475-8759. x45

FOR SALE—House, 2-bedroom,

carpeting, outbuildings, 1

acres. Ph. 428-4079. x45

FOR SALE—1972 Apache Ramada.

Sleeps 8, excellent condition,

many extras. \$1,700. 878-3707. x44

FOR SALE—John Deere H, hand-

start single bottom plow. \$350.

(517) 598-2580. x44

MOBILE HOME SPACE in Chel-

sea for small or medium size

trailer. Water, sewer, electricity.

No pets, no children. Ph. 1-474-

8552. x45

FOR SALE—1974 Honda 550. Low

mileage. Excellent condition.

426-8004, after 6 p.m. x44

GARDEN PLOWING—East Chel-

sea area. Ph. 475-2750. x46

1973 CHEVY Laguna, 20,000 miles,

good condition. \$2,200. Call 475-

District Court Proceedings

Week of April 8-15

Ralph Wallace was found guilty of impaired driving and ordered to attend the Alcohol Safety Action Program. Fines and costs, \$250.

Monard Atkins was found guilty of driving while under the influence of liquor, sentenced to one year probation; fines and costs, \$200.

Charles Johnson pled guilty of failing to stop within a safe distance ahead. Fines and costs, \$21.

Robert Barth was found guilty of impaired driving. Fines and costs, \$200, and sentenced to attend the Alcohol Safety Action Program.

Raymond Niles pled guilty to driving without an operator's license on his person. Fines and costs, \$75.

Margaret Bristol pled guilty to speeding. Fines and costs, \$21.

David Cole pled guilty to speeding. Fines and costs, \$27.

Gene Austin was found guilty of impaired driving. Sentenced to attend the Alcohol Safety Action Program. Fines and costs, \$200.

Roger Swaney appeared on a bench warrant for failing to pay fines and costs. Found guilty and sentenced to pay fines and costs on previous charge plus \$10 additional fines and costs.

Ruth Garbaugh pled guilty to speeding. Fines and costs, \$21.

Kenneth Knieper pled guilty to speeding. Fines and costs, \$23.

Michael Kercher was found guilty of driving while under the influence of liquor, and ordered to attend the Alcohol Safety Action Program. Fines and costs, \$200.

John P. Staut was found guilty of driving while under the influence of liquor. Sentenced to one year probation and ordered to attend the Alcohol Safety Action Program. Fines and costs, \$200.

John A. Schumacher was found guilty of driving while under the influence of liquor. Sentenced to two years probation. Fines and costs, \$250.

Keith Buckley pled guilty to burning garbage resulting in setting a field on fire. Fines and costs, \$35.

Sanford Walke was found guilty of impaired driving. Ordered to attend the Alcohol Safety Action Program. Fines and costs, \$250.

Charles Baize was found guilty of impaired driving. Sentenced to one year probation and ordered to attend the Alcohol Safety Action Program. Fines and costs, \$200.

Mark Brandberry was found guilty of the possession of marijuana. Sentenced to six months probation. Fines and costs, \$100.

James Greger pled guilty to careless driving. Fines and costs, \$34.

Dean Schoenberg pled guilty of possessing open intoxicants in a motor vehicle. Fines and costs, \$25.

James M. Tocca was found guilty of speeding. Fines and costs, \$35.

John Wiedman was found guilty of being drunk and disorderly. Fines and costs, \$25.

Fred Varner pled guilty of failing to stop within a safe assured distance. Fines and costs, \$21.

Philip Duva pled guilty of failing to regard a stop sign. Fines and costs, \$16.

Kathy Simon pled guilty to speeding. Fines and costs, \$21.

Shirlene Crysler pled guilty of creating a traffic hazard. Fines and costs, \$16.

Barbara Osmer pled guilty to speeding. Fines and costs, \$35.

Larry Hendricks pled guilty to speeding. Fines and costs, \$21.

Ned Davis pled guilty of driving with a revoked license. Sentenced to one year probation. Fines and costs, \$200.

Charles Burg was found guilty of having a dog at large. Fines and costs, \$20.

John Smiley was found guilty of being a minor in possession of intoxicants. Sentenced to six months probation. Fines and costs, \$35.

SOUTHERN BOY MANOR MOTEL

Efficiency Units - By Day, Week, or Month

13190 M-52

PHONE (517) 851-4213

(2 miles south of Stockbridge)

HOUSE WANTED

3- or 4-bedroom, in Village, up to \$40,000. We can sell yours.

Real Estate One. OF WASHNETAW

REALTORS

BOB MYRMEL / Manager
EVE 428-8988

1196 M-52, Chelsea 475-8693

NOTICE LIMA TOWNSHIP RESIDENTS

Please be advised that at the township meeting it was decided that all Township residents using the McKune Memorial Library are asked to purchase a library card and submit the receipt from the library to any board member or mail directly to

Leila C. Bauer, Clerk
18000 Scio-Church Rd.
Chelsea, Mich. 48118

for full reimbursement whether purchasing a family or individual card.

The Board regrets the inconvenience of this system to Lima Township residents.

Lima Township Board

CONSIGNMENT FARM AUCTION

Saturday, April 19, 1975

12:00 Noon

LOCATION: From I-94 south to Manchester (M-52) then west on Austin Rd. 3 1/2 miles to Lamb Rd., then north 1/2 mile, or from Napoleon east on Austin Rd. 7 1/2 miles to Lamb Rd. then north 1/2 mile.

FARM EQUIPMENT

Oliver Super "88" with live power, gas.
Oliver 70, gas.
1962 F-600 Ford, 14' grain rack, new tires, 4-speed trans., 2-speed rear axle.
Massey-Harris "60" combine, 10' grain table. Good condition.
Case A-6 pull combine, with Wisconsin engine (good).
Case F-5 pull combine, P.T.O.
Allis-Chalmers combine.
John Deere No. 25 combine.
I.H. 80-T hay baler.
Bradley 1440 4-row stalk chopper (like new).
J.D. 2-row mounted corn picker, No. 237, with sheller.
New Idea 2-row mounted corn picker.
4-row sprayer, with 7-roller pump.
4-row corn planter, 3-pt. hitch.
John Deere P.T.O. corn sheller on rubber.
2-row Ford cultivator (3-pt. hitch).
J.D. No. 15 green chopper.

J.D. No. 55 3-bottom 16-in. plow.
John Deere No. 555 3-bottom plow (good).
Case 3-bottom plow, new Radex bottoms.
Case 2-bottom plow with Radex bottoms.
J.D. 2-bottom 16" slat plow.
Oliver 2-bottom 16" plow.
I.H. 2-bottom plow.
Case 2-bottom 16" 3-pt. plow.
3-bottom plow.
N.I. hay conditioner (good).
30' bale elevator with motor.
20' aluminum elevator on rubber, with motor.
Case 32' elevator.
32' double chain elevator.
McCurdy drag line.
J.D. 8-ft. field cultivator.
J.D. 8-ft. springtooth drag.
I.H. hay mower.
Hay rake on steel.
Grain drill on wood.
15-38 duals.
Double horse trailer.
Snow fence.
20 locust fence posts.

TERMS: Cash Day of Sale. Not responsible for accidents.

Jim Samonek, Owner

AUCTIONEER: Jerry Jacob (313) 428-7975

CUB SCOUT NEWS

DEN 8; PACK 45-

We made instruments. We are going to have a band at our next pack meeting. We are going to sing "When She's Comin' Around the Mountain," and "This Old Man." We closed the meeting with the Pledge of Allegiance, the Living Circle and treats.

Darin Rowe, scribe.

DEN 1, PACK 415-

Cub Scouts of Den 1, Pack 415 met Thursday, April 10. We did not have a den meeting during school vacation week. We had Cub Scout Circus for our March pack meeting. It was great fun. We should have another circus soon. We had a spring scavenger hunt last week. We had to find five things.

We made puddle jumpers in den today.

Kevin Colombo, Jerry Hamerschmidt, Greg Markel and James Pearson of Den 1 took part in the trash clean-up. Our road was M-52 to end of Sibley Rd. H. Pearson and Gilbert Trevino were with us. We picked up a lot of trash. It would be pretty along the roads if folks didn't use roadsides for a free trash dump.

Our meeting was closed with a foot race.

James Pearson, scribe.

Girls Softball...

(Continued from page seven)

New to the team are freshmen Theresa Ahrens, Jane Barnes, Jody Bennett, Connie Connelly, Gail Erke, Cindy Figg, Beth Flanagan, Tracy Hawker, Sue Heydlauff, Nancy Knott, Joan Lutovsky, Sherry Miller, and Terry Miller.

GIRLS SOFTBALL SCHEDULE

April 17-Napoleonaway
April 18-St. Thomashome
April 22-Manchesteraway
April 25-Salinehome
April 29-Stockbridgehome
May 2-Lincolnaway
May 5-Grass Lakeaway
May 9-Novhome
May 13-Brightonhome
May 20-Willow Runhome
May 27-Dexteraway
State Girls Softball Tournament.
*Denotes league games.

Real Estate One. OF MICHIGAN

WHY LIST WITH REAL ESTATE ONE? CLOSING EXPERTS — We maintain the most modern computerized closing department staffed by professionals.

Phone 475-8693

School Board Briefs

Present at a regular meeting of the Chelsea Board of Education Monday, April 7, were Business Manager Mills, Principals Lane, Benedict and Assistant Principal Lapanowski. Guests: Jerry Culmore of Construction Co-ordinators, Inc., reported on the building progress. North and South elementary schools and buildings I and G at the high school are on schedule. All other projects are slightly behind schedule due to weather problems.

Marlin Tobin was appointed as the official voting delegate, and Donald Irwin as alternate to the biennial election of the Washtenaw Intermediate School District Board of Education to be held on Monday, June 2.

The resignation of Truoke Ameigh was accepted effective June 12.

The board adopted a resolution to lay off six teachers at the end of the 1974-75 school year, after reviewing the revenue situation for 1975-76.

The board continued the following teachers on tenure:

Bernice Packard, Alberta Stein, Beverly Peebles, Vivian Michel, Anne Stuermer, Susan Walton, Florence Hakala, Jo Lawyer, Jean Schmidt, Kathy Camhi, Mary Hafer, Marie Crouch, Janet Fulk, Lois Moore, Cynthia Mortensen, Margaret Nance, Robert Bullock, Susan Dye, Susan Miller, Mary Lou Bower, Nancy Van Blaricum, Suzanne De Vries, Denise Schiller, Dorothy Thodeson, Jo Ann Thornton, Charlotte Danborn, Sandra Hamilton.

Marilyn Lopez, Mary White, Diana Richardson, Sue Yager, Arlene Clark, Mary Weber, William Wehrwein, Lois Maitland, Richard Bareis, Joe Beard, Patrick Clarke, Lillian Conklin, Betty Cox, Susan Craig, Helen Fox, Nancy Gilbreath, Susan Harding, Ronald Harris, James Hoff, James Hoffmeyer, John Hyatt, Randall Johnson, Lyman Johnson, David Kinsley, Margaret Koch, Bert Kruse, Karen LaRue.

Joan Liang, DiAnn L'Roy, Jean Mann, George Marshall, Warren Mayer, Thomas Neumeyer, Judy Parker, Elizabeth Raduazo, Paul Simon, Leonard Solomon, Alice Steinbach, Cheryl Turner, Charles Waller, Judith Ward, Beverly Yelsik, Donald Young, Marilyn Zick, Dennis Andariene, William Bainton, Thomas Balistrere, Helen Bareis, Phillip Bareis, James Bechtelheimer, George Bergman, William Chandler, William Coelius, Dorothy Conlin, Nancy Corcoran, Scott Foster.

Martha Hahn, Terry Kamler, Charles Kelly, Kenneth Larson, Laurie Lazebnik, Lois Marshall, Thomas Morrison, Janice Newhouse, Ann O'Hagan, Nancy Oswald, George Prinzing, Katherine Reddeman, Joseph Rossi, John Schaffner, Theresa Schreiner, Judy Scott, James Tallman, Paul Terpstra, Orville Tompkins, Samuel Vogel, Patrick Wade, Barbara Wenk, Lynn Williams, Marian Williams, June Winans.

The board placed the following teachers on tenure after two years probation.

Judith Pietila, Laurie Sanders, Mary Coulam, Ronald Lazo, James Ticknor, Nola Borders, Jane Lehmann, Curtis Farley, Rosalie Wotila.

The board placed the following teachers on a second year of probation.

Eric Smith, Sally Schluppe, Deborah Hoteika, Alice Verrilli, Lee Delcamp, Genevieve Adams, Craig Demlow, Regina Fritzsche, David Niciewicz, James Winter, Heidi Kennel.

The board granted tenure to Mary Baker after serving one year of probation, since she had been on tenure previously.

The board voted to participate in the employer support for the National Guard Reserves.

Participation in the Michigan

Area Students Cited at U. of M. Convention

Area students from Chelsea, Dexter, Pinckney and Manchester were recognized at the University of Michigan's 52nd annual Honors Convocation Friday, April 11.

Among the 6,000 students recognized were six from Chelsea, five from Dexter, four from Pinckney and one from Manchester.

Receiving class honors from Chelsea were Diane M. Klemmer, pharmacy; Christine and Susan Rasmussen, LS&A. Class honors are awarded to those students who have received at least half A's and half B's for two terms (one term for new students) during 1974.

Two Chelseaites were named James B. Angell scholars. They are Daniel M. Gaunt, business administration and John R. Young, engineering. The boys were among 598 students named Angell scholars. Angell scholars have maintained an all-A record for two or more consecutive terms as undergraduates.

David P. Klemmer, engineering was awarded the J. Branstrom prize. This prize is given to freshmen who rank in the top five percent of their class. 308 members of the freshman class received the Branstrom prize, a book of their choice bearing the U-M seal and a bookplate.

Students from the Dexter area receiving class honors were Axel W. Joob, LS&A; Linda J. Brown and Leonard H. Lillard, LS&A; Rachel A. Box and Terry L. Proctor, nursing.

Marilyn L. Pratt of Manchester received class honors for studies completed in nursing.

Businessmen Support Recreation Council With Circus Tickets

Chelsea Recreation Council Director, Tom Balistrere, tips his hat to Chelsea businessmen in complimenting them for "their generosity and good will, coupled with the outstanding support that enabled the recreation department to bring the Voorheis Bros. Circus to Chelsea."

Balistrere noted that many of the clubs and businessmen bought large numbers of tickets for the Monday evening performances, donating them to children's charities and to the children of their employees.

Association of School Boards Legal Trust Fund was approved. The Board passed a resolution to give all senior citizens a pass for free admission to all school functions except those for which seats are reserved.

A resolution was adopted to set the Annual Election for Monday, June 9, in the large group instruction room of Beach Middle School. The meeting was adjourned at 2 a.m.

FARMERS' SUPPLY CO.

PHONE 475-1777

Complete feeding rations for all your livestock, poultry.

FARMERS' SUPPLY CO.

PHONE 475-1777

Complete feeding rations for all your livestock, poultry.

1975 CHS Varsity Track Schedule

Thursday, April 17—Lincoln	Home, 4:00
Thursday, April 24—Novi	Home, 4:00
Thursday, May 1—Brighton	Home, 4:00
Friday, May 2—Marysville Relays	Marysville, 4:00
Thursday, May 8—South Lyon	Home, 4:00
Saturday, May 10—Cardinal Relays	Michigan Center, 12:00
Tuesday, May 13—Milan	Away, 4:00
Thursday, May 17—Regional	Home, 10:00
Monday, May 19—Stockbridge-Willow Run	Home, 4:00
Thursday, May 22—Dexter	Home, 4:00
Wednesday, May 28—Conference Meet	Milan, 3:00
Saturday, May 30—State Meet	East Lansing, 10:00

CHS Varsity Baseball Schedule

Friday, April 11—Clinton	home, 4:30 p.m.
Saturday, April 12—Pinckney	home, 1:00 p.m.
Tuesday, April 15—Manchester	Manchester, 4:30 p.m.
Wednesday, April 16—Columbia Central	home, 4:00 p.m.
Saturday, April 19—Tecumseh Tournaments	Tecumseh, 10:00 a.m.
Friday, April 25—Saline	Saline, 3:30 p.m.
Saturday, April 26—Stockbridge	home, 3:30 p.m.
Friday, May 2—Lincoln	home, 3:30 p.m.
Saturday, May 3—Willow Run	Willow Run, 1:00 p.m.
Friday, May 9—Novi	home, 3:30 p.m.
Tuesday, May 13—Brighton	Brighton, 3:30 p.m.
Saturday, May 17—South Lyon	home, 3:30 p.m.
Thursday, May 22—Milan	Milan, 3:30 p.m.
Saturday, May 24—Pre-District	home, 3:30 p.m.
Tuesday, May 27—Dexter	home, 3:30 p.m.
Saturday, May 31—District	home, 3:30 p.m.

Legals

STATE OF MICHIGAN

The Probate Court for the County of Washtenaw.

File No. 83169

Estate of ELPHIEDA MCCORMICK, Deceased.

NOTICE: On May 8, 1975, at 9:00 a.m., in the Probate Courtroom, Ann Arbor, Michigan, before the Hon. Rodney E. Hutchinson, Judge of Probate, a hearing will be held on the petition of John P. Kuesch, Administrator with will annexed, for allowance of his final account and for assignment of residue.

Dated: April 17, 1975.

John P. Kuesch, Petitioner

121 S. Main St.
Chelsea, Mich. 48118

Attorney for Petitioner:
Keough & Flintoft
121 S. Main St.
Chelsea, Mich. 48118
Phone (313) 475-8671.

April 17

Notice of Meeting To Consider Objections to the Construction of Curb and Gutter and Sidewalk in the Village of Chelsea, the cost of which is to be paid in part by Special Assessment.

TAKE NOTICE that the Chelsea Village Council will hold a special meeting on Tuesday, April 29, 1975 at 7:30 o'clock p.m. in the Village Council Chambers, 104 East Middle Street, Chelsea, Michigan to consider objections to the construction of sidewalk and/or curb and gutter in the areas hereinafter listed, one-half of the cost thereof to be defrayed by special assessment, pro-rated according to abutting frontage:

CURB and GUTTER

WASHINGTON STREET:
North side from Freer Road west approximately 600 feet to Lot 17 of Palmer Sub. No. 1
South side from Freer Road west approximately 500 feet.

FREER ROAD:
West side from the Penn Central right-of-way south to Washington Street.
East side from the Penn Central right-of-way south 1,683 feet.

SIDEWALK

WASHINGTON STREET:
South side from Freer Road west approximately 1,115 feet to the northeast corner of Lot 8 of Grantwood Subdivision.

FREER ROAD:
West side from a point 604 feet south of the Penn Central right-of-way south to Washington Street.

DEWEY STREET:
North side from McKinley Street west 116 feet.

Plans and estimates are on file at the office of the Village Clerk, 104 East Middle Street.

OES Collecting Used, Obsolete Eyeglasses

Have you ever wondered what to do with used eyeglasses, out-of-date frames, and scratched lenses that can no longer be re-ground? Well, the Grand Chapter of the Order of the Eastern Star of Michigan is collecting those used frames and lenses for needy people.

Frames may be used again and the broken and scratched lenses are used in arts and crafts work.

Used glasses may be taken to the Masonic Temple on W. Middle St., Friday, April 25, or dropped in the box at Groves Station on Main St., any day.

OES recommends putting "your old glasses to good use by donating them for use to those less fortunate," who cannot afford new frames.

Mobil-Toons

By GLENN

GLENN'S MOBIL SERVICE

1627 M-52 & I-94
CHELSEA, MICHIGAN
Phone 475-1767
GLENN HEIM PROP.

Girl Scouts ...

TROOP 442-

We planned our camp-out for Camp Linden on April 18. We will go for three days. We talked about menu, clothes and hikes. We will have a church service, dramatics and badge work.

Mrs. Ford was present at our meeting. She said Mrs. Boyd will go camping with us. We practiced sneaky snake for our Mother's Day program. Kris Ellen Johnson will be our snake.

Susan Ford, scribe.

Telephone Your Club News To 475-1371.

POLE BUILDINGS

(GO UP EASILY...ECONOMICALLY)

ANY TYPE - ANY STYLE - ANY SIZE

Residential - Agriculture - Commercial

PROMPT CONSTRUCTION DATES

Low prices and high quality workmanship.

OWEN CUSTOM BUILDERS

LICENSED & INSURED - MANY SATISFIED CUSTOMERS

JACKSON (517) 769-2669

VILLAGE OF CHELSEA

THOMAS NEUMEYER, CLERK

HOUSEHOLD AUCTION

The following articles will be sold at public auction located 2 miles south of Chelsea on M-52 to Jerusalem Rd., east 1 mile to Waltrous Rd., south 1/4 mile, House No. 3451.

SATURDAY, APRIL 19

Beginning at 12:30 p.m.

PHONE STOCKBRIDGE 517-851-8042

PRICE BROTHERS AUCTIONEERS

PHONE STOCKBRIDGE 517-851-8042

HOUSEHOLD - FURNITURE - ANTIQUES

Library table, Oak dresser, China cabinet, 3 floor lamps, 10 wooden chairs, Set bunk beds, good, Hoover portable washing machine, Laundry stove, Combination radio and phonograph, Heating stove, Belt massager and exerciser, 20 boxes vases and floral supplies, new, 19 floral arrangements, 1 pair 7-candle candelabra, floor model, like new, Teardrop glass chandelier, Old silverware, Machete and case, never used, 3 wooden stands, Electric adding machine, like new, Old typewriter, 2 old trunks, Old pitcher and bowl, Old adding machine, Bird cage, Table radio, Quantity Lake Superior driftwood, Microscope set, never used, 3 aisle runners, good.

Sleeping bag, 2 ironing boards, 2 wooden easels, Fire alarm set, Vacuum sweeper, Commercial type roll of paper and hanger, Old milk bottles, Quantity dishes, Bicycle, Large wooden box, Set of old scales, 3 water pumps and motors, Two 2-wheel trailers, Grinding wheel and stand, Wire box and saw, Old silverware, Music stand, Oil tank, Blue glass fruit jars, 20 wire rabbit cages, Camper shell, Copper boiler, Extension ladder, Paint sprayer, Quantity crocks, 2 wheelbarrows, Furnace blower and motor, Gas engine, Picture frames, 3-man chain saw, Jacobsen riding mower, Large amount of small items.

TERMS: Cash. Not responsible for accidents or items after sold.

LEWIS FISH OWNER

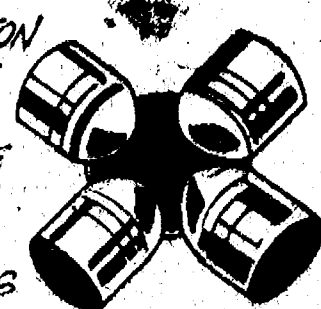


BOWLING NEWS



Automobile Service Tips

UNIVERSAL JOINTS
PROVIDE A FLEXIBLE CONNECTION FOR THE DRIVE SHAFT AT THE TRANSMISSION AND REAR END, PERMITTING DRIVE SHAFT TO MOVE WITH UP AND DOWN MOTION OF THE CAR AND REAR WHEELS.
SERVICING GENERALLY REQUIRES REPLACEMENT OF BOTH UNIVERSAL JOINT JOURNAL AND BEARING ASSEMBLIES.



Junior Swingers

Leisure Time League

Hi-Point Mixed League

W	L
Rods III	33
The Pros	32
Hot Tamales	31
Pin Swipers	30
The Buzz	29
Lima Center 5	28
Pin Smokers	27
Born Losers	26
Hot Shots	25
YBA Scorers	24
Star Strikers	23
Chelsea All Stars	22

Girls, games over 120: C. Miller, 136, 123; C. Minix, 120, 153, 194; S. Fahrner, 121; K. Milliken, 124; S. C. Gols, 137; D. Packard, 149, 136; M. Fahrner, 156, 137; C. Collins, 160, 186, 145; S. Schulze, 136, 146; K. Tobin, 125, 186, 141; K. Stepp, 124; D. Wilson, K. Fairbanks, 123, 146, 153; K. Keiser, 148; B. Roy, 127; B. Pearson, 129; D. Alexander, 128.

Girls, series over 350: C. Miller, 354; G. Minix, 467; K. Milliken, 372; D. Packard, 378; M. Fahrner, 434; C. Collins, 491; S. Schulze, 398; K. Tobin, 432; K. Fairbanks, 422; K. Keiser, 382.

Boys, games over 150: T. Hinz, 168; S. Hegadorn, 177; Dean Thompson, 180, 187, 177; Dennis Thompson, 187; R. Weiner, 173; J. Sweet, 164, 158; R. McGibney, 158; S. Lyerla, 181, 190, 183; M. Foster, 151, 186, 186; D. Messner, 168, 170, 183; D. Alber, 199, 172, 175; C. Sannes, 181, 181.

Boys, series over 440: Dean Thompson, 514; Dennis Thompson, 448; R. Weiner, 450; J. Sweet, 462; S. Lyerla, 551; M. Foster, 495; D. Messner, 521; D. Alber, 546; C. Sannes, 498.

Sunday Night Leftovers

Standings as of April 13	W	L
Strike-Outs	41	19
Mix-Ups	40	20
Tavabag	36	24
Edward's Const.	32	28
Neighbors	30 1/2	29 1/2
Snackers	29	31
Recyclers	28	32
Bullets	28	32
Strangers	23 3/8	36 1/2
Four & One	22	38
Mistifs	19	41

Men, over 200: B. Seeburger, 200, 202.

Men, over 500: B. Seeburger, 583; D. Simeran, 530.

Lomp, over 180: B. Packard, 189.

Women, over 450: B. Packard, 466.

*** New Salesman for PIONEER seeds**
BRAND

KEITH BRADBURY
PHONE 475-8316
10195 EASTON RD. DEXTER, MICH.

PIONEER
SEEDS AND BEEF CATTLE
PIONEER HI-BRED, INC.
© Registered trademark of Pioneer Hi-Bred International, Inc., Des Moines, Iowa 50319

MARK IV LOUNGE
PHONE 475-8141
1198 M-52 CHELSEA

TRY OUR INFLATION BUSTING BOWLING RATES
From 11:30 p.m. Until Closing
Monday thru Friday

BOWLING BALLS, BAGS, SHOES
NOW IN STOCK.

CHELSEA LANES, Inc.
1198 M-52 CHELSEA
PHONE 475-8141

W	L
New Breed	636
Dexter Gear & Spline	601
Hit & Missers	581
River Rats	579
Heavy Traffic	578
Trouble Shooters	564
Ding A Lings	561
Flat Tires	542
Alley Runners	531
4D's	520
Pres.	515
Faber Fabrics	488

Women, high game, 150 and over: P. Patterson, 160, 166; E. Harmon, 177, 162; W. Landwehr, 150, 156; S. Ward, 170; N. Reid, 162; B. Braun, 152; D. Hansen, 156, 151; M. Inbody, 151, 171; M. Paul, 172, 164; P. Scherdt, 154, 150; V. Guenther, 162, 164; M. Garrott, 155; L. Martinez, 156; C. Behnke, 155; D. Detting, 151, 167; M. Cox, 154.

Women, high series, 425 and over: D. Detting, 451; M. Garrott, 435; C. Behnke, 441; M. Inbody, 461; M. Paul, 472; P. Scherdt, 441; V. Guenther, 471; P. Patterson, 487; E. Harmon, 487; W. Landwehr, 445.

Men, high game, 160 and over: R. Camper, 177, 167; T. Steers, 160, 163, 171; W. Beuerle, 161; W. Teachworth, 170, 203, 163; A. Hansen, 168, 196; O. Inbody, 170; M. Fox, 186; F. Palacios, 179; D. Carpenter, 185, 170, 163.

Men, high series, 450 and over: D. Carpenter, 518; F. Palacios, 481; T. Steers, 494; W. Teachworth, 536; A. Hansen, 518; R. Camper, 489.

Tri-City Mixed League

Standings as of April 11	W	L
Craft Appliance Co.	142	82
Real Estate One	132	91
Jiffy Mixes	133	91
Jerry & Doug's Quality	129	95
E. P. Smith Pallet Co.	121	103
Stivers	121	103
Chelsea Cleaners	116	108
Portage Hardware	116	108
Sprague Buick & Olds	114	110
McEwan & Robinson	113	111
3-D Sales & Service	108	116
Mel's Roofing	108	116
R. L. Bauer Builders	108	116
Take Seven	100	124
Hoyer's Hustlers	99	125
Euler & Swersky	88	136
Chelsea Glass Works	86	138

450 series, men: J. Baker, 523; K. Barksdale, 521; E. Boku, 515; S. Cavender, 511; P. Fletcher, 511; B. Kaiser, 581; H. Kunzelman, 507; R. Lentz, 545; J. Lyerla, 506; A. Sannes, 504; J. Stoffer, 513; R. V. Worden, 527.

200 games, men: K. Barksdale, 205; E. Boku, 209; S. Cavender, 208; B. Kaiser, 282.

450 series, women: V. Allen, 501; A. Hocking, 451; C. Stoffer, 465; M. Westcott, 497.

150 games, women: V. Allen, 192, 165; C. Baker, 156; G. Cooper, 157; B. Fike, 170; K. Fletcher, 155; A. Hocking, 157; J. Kaiser, 162; B. Kunzelman, 185; K. Lentz, 150, 157; B. Parish, 152; C. Stoffer, 168, 158; J. Sweeney, 151; N. Thompson, 167; M. Westcott, 205; M. Weston, 161.

Chelsea Women's Bowling Club

Standings as of April 9	W	L
Wolverine Bar	78	42
Palmer Ford	72 1/2	47 1/2
Parish's Cleaners	71	49
Jiffy Mixes	71	49
Washtenaw Engineering	65	51
Mark IV Lounge	62 1/2	53 1/2
Norris Electric	61 1/2	54 1/2
Norm's Barber Shop	61 1/2	54 1/2
Thompson's Pizza	60 1/2	55 1/2
Chelsea Grinding	60 1/2	55 1/2
Chelsea Milling	59	57
Larry's Roadside Market	54	62

Rushing's Temp. Help, 53 1/2; Joe & Judy's, 51; Lloyd Bridges, 49 1/2; Heydlauff's, 49 1/2; Glenn's Mobil, 46 1/2; Klink Excavating, 34 1/2.

450 series or over: D. Alber, 564; J. Hafner, 544; D. Eisenbeiser, 538; B. Fritz, 533; R. Hummel, 521; N. Kern, 507; P. Fitzsimmons, 501; J. Rowe, 471; M. E. Sutter, 487; L. Alexander, 463; A. Sindlinger, 461; P. Poertner, 475; P. Wurster, 461; A. Boham, 453; B. Bridges, 461; M. Powell, 461; D. Norris, 459; P. Norris, 489; G. Kuhl, 468; L. Orlovski, 453; S. Call, 462; N. Packard, 461.

150 games and over: D. Alber, 172, 174, 218; J. Hafner, 188, 171, 185; D. Eisenbeiser, 218, 183; B. Fritz, 205, 160, 168; R. Hummel,

Charlie Brown and Snoopy's Friends Prep Division

Standings as of April 12	W	L
Streaking Strikers	43	21
Pin Fighters	42	22
Super Stars	42	22
Buildogs	37	27
Super Strikers	35	29
Thompson's Submarines	32	32
Streakers	28 1/2	35 1/2
Bobbing Pins	28 1/2	35 1/2
Pin Pushers	17	47

Girls, games 100 and over: T. Alexander, 134, 116; D. Alexander, 128; M. Northrop, 126; L. Smith, 124; D. Marsh, 124; L. Schantz, 124; D. Steinaway, 114; M. Alexander, 111, 106; T. Schulze, 108; C. Feeney, 105; C. Fahrner, 104; L. Davis.

Boys, games 140 and over: D. Alber, 158; D. McGill, 157, 153; J. Rowe, 152; J. Stock, 148; D. Eisele, 143, 141.

Senior House League

Standings as of April 14	W	L
Washtenaw Crop Serv.	88	8
S. J. Custom Leather	134	90
Frank Groh's Chev.	124	100
Schneider's Grocery	121 1/2	102 1/2
Seitz's Tavern	121	103
Sarns, Inc.	120	104
Chelsea Grinding	119 1/2	104 1/2
Gambles	118	106
Sylvan Center	117	107
Mark IV Lounge	114	110
Lloyd Bridges Chev.	111 1/2	112 1/2
Dexter Automatics	111	113
Bauer Builders	103	121
Foor's Mobil	102 1/2	121 1/2
Village Motor Sales	88	136
Walt's Barber Shop	84	140
Bent's Arco	76	148

600 series: B. Layton, 616; E. Vassas, 607.

525 and over series: D. Hafley, 552; G. Burnett, 562; J. Harmon, 532; G. Knickerbocker, 537; A. Sannes, 544; G. Padgham, 589; M. Sweet, 533; D. Murphy, 576; B. McGibney, 550; L. Sanderson, 539; R. Walker, 562; G. Linebaugh, 525; J. Harook, 528; J. Collins, 540; R. Kiehl, 532; M. Poertner, 532; N. Fahrner, 558; S. Haydock, 558; G. Packard, 552.

210 and over games: B. McGibney, 210; G. Padgham, 212; D. Murphy, 217; G. Knickerbocker, 215; E. Vassas, 217; G. Burnett, 212; J. Harmon, 211; R. Canine, 219; J. Collins, 214; R. Kiehl, 211; N. Fahrner, 214; B. Layton, 216.

Sunday Swingers

Standings as of April 13	W	L
H & M	49	15
C & A	48	16
Sylvan Four	39 1/2	24 1/2
Extrajero's	39	25
Spuds & Suds	38	26
Iraticrats	33 1/2	30 1/2
The Handicaps	33 1/2	30 1/2
Flying Dutchmen	32 1/2	31 1/2
The Sting	32	32
The Palmers	31	33
Pin-Ups	29	35
Late Starters	29	35
Sidekicks	28	36
D & A's	24 1/2	39 1/2
A & N	24	40
Q & B's	23	41
King of Beers	22 1/2	41 1/2
The Zero's	20	44

Men, over 175: T. Helmholdt, 183; E. Novak, 181, 185; H. Johnson, 177, 175; G. Dresch, 191; H. Vanderhaar, 188; N. Palmer, 194.

Chelsea Suburban

Standings as of April 9	W	L
Chelsea Drug	123	87
Chelsea State Bank	113	97
Dana Corp.	112	98
Foor Mobil	111	99
Dancer's	110	100
Frisinger Realty	106	104
Dairy Queen	105	105
State Farm	101	109
Mark IV Lounge	99	111
Chelsea Assoc. Builders	97	113
Cavanaugh Lake Store	94	116
Waterloo Garage	89	121

150 games and over: S. Hafner, 204; J. Schdlze, 154; M. Usher, 157, 189, 177; L. Beeman, 156, 175; F. Fredrick, 162; T. Monroe, 179, 157, 199; M. Bollinger, 150; J. Stoll, 171, 165, 188; G. Baczynski, 165, 154; B. Robeson, 158; R. Rossbach, 167; N. Prater, 158; B. Smith, 171, 187; P. Elliott, 167, 172; S. Ratzlaff, 152; N. Collins, 173, 169; N. Packard, 156, 169; D. Keizer, 150; J. Boku, 164, 177; D. Keizer, 167, 162, 157; C. Peterson, 154; M. DeLaTorre, 157, 164, 201; C. Stoffer, 165; D. Hawley, 162, 154; S. Bowen, 166; V. Stewart, 172; D. Kinsey, 166, 179; M. Inbody, 172, 154, 179; E. Yocum, 155, 156; D. Sannes, 174, 153; A. Hocking, 186; F. Cole, 199, 172, 163; E. Figg, 162; B. Fike, 167; R. West, 167, 180; R. McGibney, 189.

425 series and over: T. Monroe, 535; F. Cole, 534; M. Usher, 523; J. Stoll, 524; B. Smith, 504; M. Inbody, 508; M. DeLaTorre, 522; S. Hafner, 478; J. Schulze, 435; L. Beeman, 455; N. Prater, 428; G. Baczynski, 448; P. Elliott, 468; N. Collins, 438; N. Packard, 446; J. Boku, 489; D. Keizer, 444; P. Harook, 431; D. Kinsey, 489; E. Yocum, 444; D. Sannes, 459; V. Harvey, 433; A. Hocking, 460; B. Hafley, 469; R. West, 494; R. McGibney, 463.

Chelsea Nite Owl League

Standings as of March 14	W	L
Southern Boy	85 1/2	42 1/2
Steele's Htg. & Bldg.	77	51
McCalla Mobile Feeds	78	52
Cavanaugh Lake Store	74 1/2	53 1/2
Dault & LeVan	73	55
Fitzsimmons Excavating	68	60
Norm's Body Shop	67	61
Bollinger's Sanitation	65 1/2	62 1/2
Hanco Sports Center	62 1/2	65 1/2
Chelsea Finance	62	66
Ted's Standard	60	68
Wahl's Oil	58 1/2	69 1/2
Red's Standard	58	70
Sherlock Homes	57 1/2	70 1/2
Lopez Builders	48	80
Team No. 2	42	98

200 games and over: J. Elliott, 231; G. Crawford, 200; T. Kams, 226; O. Hansen, 212; F. Hill, 203; J. Borders, 204; K. Hartka, 203; P. Smith, 212; W. Maier, 202; E. Young, 204; J. Dault, 200; E. Boku, 200; T. Steele, 214.

500 series and over: G. Bee-

Chelsea Industrial Suburban

Standings as of April 10	W	L
Ann Arbor Hyd.	32	16
Harvey's Tavern	30	18
Double A No. 99	27	21
Thompson Lounge	26	22
Double A No. 2	25	23
The Other Team	22	26
Mark IV Lounge	18	30
Dana PTO	12	36
High single game: S. Hopkins, 235; S. Coyer, 222; I. Filler, 215.		
High single series: S. Hopkins, 612; S. Anderson, 598; J. Picklo, 602.		
High team game: Harvey's Tavern, 944; Double A No. 99, 836.		

Chelsea Lanes Mixed

Standings as of April 11	W	L
Gerry Rushing's	136	88
Bushwackers	133	91
Mark IV Lounge	129	95
Torricce & Rawson	127	97
Bollinger's	120	104
Adamson & Henson	120	104
Ann Arbor Centerless	119	106
Marsh & Verwey	119	106
Doug's Painting	116	108
The Hopefuls	114	110
Sannocks	113	111
Hook Line & Stinkers	109 1/2	114 1/2
Federal Screw Outlaws	108	118
Pinheads	102	122
Sak's Fifth Avenue	102	122
Mort's Custom Shop	96	128
Bable & Silcox	89	135
Willy & The We's	63 1/2	158 1/2

Women, 150 games: A. Rawson, 151, 157; B. Torricce, 155, 159; W. Trapp, 155, 150; D. Sannes, 154; R. Harook, 153; K. Wheeling, 158; S. R. Bable, 152; E. Silcox, 167; D. Keizer, 153, 168; B. Marsh, 156; D. Verwey, 156; B. Smith, 156, 173; L. Jarvis, 153; J. Norris, 173; L. Thibault, 168, 169.

Women, 450 series: K. Wheeling, 494; B. Smith, 492; I. Thibault, 456.

Men, 200 games: E. Harook, 212; A. Sannes, 218; H. Bable, 204; R. Adamson, 200.

Men, 500 series: J. Torricce, 504; J. Trapp, 500; E. Harook, 576; A. Sannes, 506; W. Steinaway, 506; R. Adamson, 500; R. Morgan, 510.

Junior House League

Standings as of April 10	W	L
Frank Groh's Chev.	141	76
Mark IV Lounge	131	79
Chelsea Lanes	129	81
Mac Tools	128	88
Wolverine No. II	119	98
Dana Demons	118	99
Dana Maintenance	111	106
Boyer Automotive	106	111
Smith's AAA	106	111
Trading Post	106	111
Delf's Paints	105	112
Jiffy Mix	103	107
Rockwell International	100 1/2	116 1/2
3-D Sales & Service	86 1/2	124
Doug's Painting	83	124
Washtenaw Engineering	83	117
IPSCO	77	130
Slocum Const. & Build.	64	153

525 or over: A. Fletcher, Jr., 594; G. Burnett, 581; J. Toma, 582; G. Hamilton, 525; W. Beeman, 557; P. Kelly, 533; T. Dittmar, 546; G. Beeman, 554; P. Fletcher, 554; E. Greenleaf, 554; T. Steele, 554; F. Northrop, 579; A. Fleischmann, 548; D. Crosby, 527; T. Rickelman, 532; L. Bauer, 559; M. Eismann, 528; J. Borders, 575; B. Ringe, 582; B. Smith, 546; J. Harook, 535; T. Kruse, 533; T. Kams, 525.

210 or over: G. Burnett, 231; J. Toma, 212; G. Beeman, 212; A. Fleischmann, 211; M. Eismann, 212; J. Borders, 214; B. Ringe, 215; B. Smith, 215.

Rolling Pin League

Standings as of April 15		
	W	L
Egg Beaters	84	36
Coffee Cups	81	39
Moppy Uppers	72	48
Spooners	67	53
Mixers	65½	54½
Blenders	61½	58½
Sugar Bowls	60½	59½
Brooms	54	66
Kitchen Kapers	54	66
Fish Rags	53½	66½
Teaters	53	67
Kookie Kutters	51½	68½
Polly Mops	51	69
Grinders	50½	69½
Coachers	48	72
425 and over series: J. Baku,		
427; R. Parker, 405; P. Harook,		
439; R. Musbach, 494; D. Mc-		
Donald, 447; B. Marsh, 456; H.		
larns, 479; J. Edick, 445; M. Eeles,		
422; E. Williams, 492; C. Shep-		
herd, 494; R. Foster, 464; J. Shep-		



A HURDLER on the Albion College 1975 track team, is freshman Craig Coltre. Craig is one of six freshman on the 1975 roster, and the only freshman who will participate in the hurdling events.

Craig Coltre Hurdling for Albion College

Chelseaite Craig Coltre, a freshman at Albion College, is among the young team of enthusiastic Britons who will greet their new head track coach, Dave Egnatuk, this spring.

Judging from early practices, Egnatuk stated that the "new additions to the track squad look promising. We ought to compete well against all schools, and I know the team is as enthusiastic as I am about the oncoming year."

Craig is one of six freshman new to the Albion track team. He is the only freshman on this year's roster for the hurdle events.

Subscribe today to The Standard!

Area Schools Will Receive Circus Prevue

Children of the Chelsea and Manchester schools (with the exception of North school) will enjoy a special mini-performance of the Voorheis Bros. Circus in their own schools.

This mini-show will feature the renowned tumbling and gymnastic family, the Langs.

The Lang family, Mr. and Mrs. and their four children, will be at the schools to preview two performances of the Voorheis Bros. Circus to be given Monday evening, April 21, under the roof of the Chelsea High gymnasium.

SCHOOL LUNCH MENU

Week of April 21-25
Monday—Spaghetti with meat sauce, buttered wax beans, bread and butter, pear dessert and milk.

Tuesday—Hot "burgers" on hot dog buns, slice of cheese, french fries, applesauce, coffee cake and milk.

Wednesday—Beef biscuit roll with gravy, buttered corn, bread and butter, rocky road pudding and milk.

Thursday—Submarine sandwiches with sauce, soup of the day, crackers, Jell-O with fruit and milk.

Friday—Fish burgers and buns, tartar sauce, salad, tatar tots, peach cobbler and milk.

MANURE SALE
Members of the Easy Riders 4-H club are holding a manure sale this Saturday, April 19, from 10 a.m. to 6 p.m. at Polly's parking lot. The parking lot is located on the corner of M-52 and Old US-12. Profits from the sale will go in the club's fund for use in future activities.



BOY SCOUT TROOP 476 held their semi-annual paper drive Saturday, April 12. Pictured in the truck before filling it full are, front row, Charles Burgess, Bill Burgess, Leon Wheeler, and Chuck Stoner. In the rear, Don Oesterle, Don Dettling, Terry Bradshaw, Ray Worden, David Hall, and Duane Hall. Scouts who participated in the drive but not pictured are Mike Stoner, Donald Hall and Bob Burgess.

St. Louis School Notes

Ten of our boys received their First Communion, Sunday morning, April 13. Communion was given by the Director of the School, Father Germano.

A luncheon followed for friends and family of the boys. Sister Mary and Mrs. Robbins prepared and served the luncheon to approximately 100 people.

Sunday afternoon the boys spent in preparation to welcome the people of Chelsea, Dexter, Grass Lake, and Manchester to St. Louis school and to show them their new dorms.

Father Germano selected 10 of the older boys to show visitors around the school. The younger boys enjoyed a film shown in the gymnasium by Father Natali. Punch and cookies followed. Guests seemed to be pleased to see the boys and the things they are doing.

Monday, the boys took their swimming lessons and prepared for their Olympics.

They are looking forward to Friday, when their parents will pick them up for the week-end. They are anxious to tell their parents about life in the new dorms.

Visitors Shown New Facilities at St. Louis School

The sun greeted visitors to the St. Louis School for Exceptional Boys Sunday, April 13 as they arrived for an Open House reception celebrating the completion of the addition to the school.

Residents of Chelsea, Dexter, Grass Lake, and Manchester were among those present at the afternoon reception.

Ten of the older boys of St. Louis school had been selected to show the guests the new facility.

Following a tour of the addition which overlooks a man-made lake, the guests were invited to share light refreshments with the boys and staff of St. Louis school.

AWOL Soldier Turns Himself in To Chelsea Police

Chelsea village police received a phone call Sunday evening when a man called from a local gas station informed police that he wanted to turn himself over to officials for being AWOL.

James Lecher Morgan, First Battalion, 50th Brigade, U. S. Army, Ft. Hood, Tex., phoned village police from Glenn's Mobil Station at 8:15 p.m., Sunday. Morgan advised police that he wished to turn himself in for being AWOL from his Texas Army Base.

Officers reported to the Mobil station, where they made a LEIN (Law Enforcement Information Network) check on Morgan. The defendant was found guilty and wanted on a second charge by the Elkton Police Dept. for UDAA (unlawful driving away of an auto) theft.

Morgan was taken to the Washenaw County Jail where Deputy McAllister of the Washenaw County Sheriff's Department contacted officials at Selfridge Air Force Base and Chief Duane Alexander of the Elkton Police Dept.

Firemen Called for Two Small Grass Fires

Chelsea volunteer fire fighters put out two small grass fires last week, both due to unknown causes.

The first was on April 10 in Lyndon township, west on North Territorial Rd. near Stoffer Rd. The second followed three days later, April 13, on Grass Lake Rd., in Sharon township.

Chelsea fire fighters were called to the Chelsea Medical Center after noon Tuesday, April 15, to assist in smothering a smoke fire in the Center's ambulance.

Upon arriving, fighters determined the cause of the fire to be the breaking of the fan belt.

Broken Fan Belt Results In Minor Smoke Fire

Chelsea fire fighters were called to the Chelsea Medical Center after noon Tuesday, April 15, to assist in smothering a smoke fire in the Center's ambulance.

Upon arriving, fighters determined the cause of the fire to be the breaking of the fan belt.

Firemen Called for Two Small Grass Fires

Chelsea volunteer fire fighters put out two small grass fires last week, both due to unknown causes.

The first was on April 10 in Lyndon township, west on North Territorial Rd. near Stoffer Rd. The second followed three days later, April 13, on Grass Lake Rd., in Sharon township.

Chelsea fire fighters were called to the Chelsea Medical Center after noon Tuesday, April 15, to assist in smothering a smoke fire in the Center's ambulance.

Upon arriving, fighters determined the cause of the fire to be the breaking of the fan belt.

Broken Fan Belt Results In Minor Smoke Fire

Chelsea fire fighters were called to the Chelsea Medical Center after noon Tuesday, April 15, to assist in smothering a smoke fire in the Center's ambulance.

Upon arriving, fighters determined the cause of the fire to be the breaking of the fan belt.

Firemen Called for Two Small Grass Fires

Chelsea volunteer fire fighters put out two small grass fires last week, both due to unknown causes.

The first was on April 10 in Lyndon township, west on North Territorial Rd. near Stoffer Rd. The second followed three days later, April 13, on Grass Lake Rd., in Sharon township.

Chelsea fire fighters were called to the Chelsea Medical Center after noon Tuesday, April 15, to assist in smothering a smoke fire in the Center's ambulance.

Upon arriving, fighters determined the cause of the fire to be the breaking of the fan belt.

Broken Fan Belt Results In Minor Smoke Fire

Chelsea fire fighters were called to the Chelsea Medical Center after noon Tuesday, April 15, to assist in smothering a smoke fire in the Center's ambulance.

Letters to the Editor

To the Editor:
May I express my opinion for what it may be worth through the Letter Box of your splendid Chelsea Standard?

It has to do with a proposed Senior Citizens and Employees Project No. 4 to add to the Chelsea Medical Center.

I am heartily in favor of this greatly needed proposal as are many people in this area, but I realize that there are obstacles to be surmounted before it can be approved by the Zoning Board.

I should like to say, however, that in the nearly 50 years since I became the wife of the late Donald H. Bacon that I have seen many instances where the always progressive and outstanding spirit of the citizens of Chelsea "jumped many hurdles" and won out in cases which became of great benefit to the town.

One in particular comes to my mind now; the old peat marsh where the Chelsea Medical Center now stands.

My husband, at an early age, foresaw what could be done with the marsh if properly drained, etc. Almost nobody thought likewise, but years later when he met the great Dr. Papo and related his ideas to him things took shape with the result after much intensive deliberation and work we now have one of the most outstanding medical centers in the United States.

One of my most prized possessions is the beautifully inscribed spade given to my husband when he was given the honor of digging the first spade full of dirt for the Medical Center. I would not part with it for anything.

With hope that the Senior Citizens and Employees addition becomes a reality.

Faithfully,
Mrs. Donald H. Bacon.

Firemen Called for Two Small Grass Fires

Chelsea volunteer fire fighters put out two small grass fires last week, both due to unknown causes.

The first was on April 10 in Lyndon township, west on North Territorial Rd. near Stoffer Rd. The second followed three days later, April 13, on Grass Lake Rd., in Sharon township.

Chelsea fire fighters were called to the Chelsea Medical Center after noon Tuesday, April 15, to assist in smothering a smoke fire in the Center's ambulance.

Upon arriving, fighters determined the cause of the fire to be the breaking of the fan belt.

Broken Fan Belt Results In Minor Smoke Fire

Chelsea fire fighters were called to the Chelsea Medical Center after noon Tuesday, April 15, to assist in smothering a smoke fire in the Center's ambulance.

Upon arriving, fighters determined the cause of the fire to be the breaking of the fan belt.

Firemen Called for Two Small Grass Fires

Chelsea volunteer fire fighters put out two small grass fires last week, both due to unknown causes.

The first was on April 10 in Lyndon township, west on North Territorial Rd. near Stoffer Rd. The second followed three days later, April 13, on Grass Lake Rd., in Sharon township.

Chelsea fire fighters were called to the Chelsea Medical Center after noon Tuesday, April 15, to assist in smothering a smoke fire in the Center's ambulance.

Upon arriving, fighters determined the cause of the fire to be the breaking of the fan belt.

Broken Fan Belt Results In Minor Smoke Fire

Chelsea fire fighters were called to the Chelsea Medical Center after noon Tuesday, April 15, to assist in smothering a smoke fire in the Center's ambulance.

Upon arriving, fighters determined the cause of the fire to be the breaking of the fan belt.

Firemen Called for Two Small Grass Fires

Chelsea volunteer fire fighters put out two small grass fires last week, both due to unknown causes.

The first was on April 10 in Lyndon township, west on North Territorial Rd. near Stoffer Rd. The second followed three days later, April 13, on Grass Lake Rd., in Sharon township.

Chelsea fire fighters were called to the Chelsea Medical Center after noon Tuesday, April 15, to assist in smothering a smoke fire in the Center's ambulance.

Upon arriving, fighters determined the cause of the fire to be the breaking of the fan belt.

Broken Fan Belt Results In Minor Smoke Fire

Chelsea fire fighters were called to the Chelsea Medical Center after noon Tuesday, April 15, to assist in smothering a smoke fire in the Center's ambulance.

Upon arriving, fighters determined the cause of the fire to be the breaking of the fan belt.

Firemen Called for Two Small Grass Fires

Second Show Arranged for Don Cooper

Chelsea Kiwanis Club has sponsored a Travel and Adventure (Travelogue) Series in Chelsea for the past 12 years.

This year's last program is Saturday, April 26, featuring the incomparable Don Cooper with an entirely new show entitled "Northwestern Adventure."

Because of Cooper's tremendous popularity in this area, the club has made arrangements for two shows the same evening, 6 p.m. and 8 p.m. The regular 8 p.m. show is being reserved for season ticket holders, but tickets will be sold at the door on a "first come first serve" basis for the 6 p.m. show. Season ticket holders are also welcome to attend the 6 p.m. show if it is desired.

All Schools Closing Early Next Thursday

All students will be excused at 11:15 a.m. on Thursday, April 24 in order to provide teachers with time to study and work on the curriculum. Elementary and Middle school teachers will be working on changes made possible by the future move into the new buildings.

High school teachers will be making plans for the visit of the North Central Association evaluation next year.

Parents with children eligible to enter kindergarten in the fall, and who find this time more convenient to register their youngsters, should contact the South school office at 475-2913.

Broken Fan Belt Results In Minor Smoke Fire

Chelsea fire fighters were called to the Chelsea Medical Center after noon Tuesday, April 15, to assist in smothering a smoke fire in the Center's ambulance.

Upon arriving, fighters determined the cause of the fire to be the breaking of the fan belt.

Firemen Called for Two Small Grass Fires

Chelsea volunteer fire fighters put out two small grass fires last week, both due to unknown causes.

The first was on April 10 in Lyndon township, west on North Territorial Rd. near Stoffer Rd. The second followed three days later, April 13, on Grass Lake Rd., in Sharon township.

Chelsea fire fighters were called to the Chelsea Medical Center after noon Tuesday, April 15, to assist in smothering a smoke fire in the Center's ambulance.

Upon arriving, fighters determined the cause of the fire to be the breaking of the fan belt.

Broken Fan Belt Results In Minor Smoke Fire

Chelsea fire fighters were called to the Chelsea Medical Center after noon Tuesday, April 15, to assist in smothering a smoke fire in the Center's ambulance.

Upon arriving, fighters determined the cause of the fire to be the breaking of the fan belt.

Firemen Called for Two Small Grass Fires

Chelsea volunteer fire fighters put out two small grass fires last week, both due to unknown causes.

The first was on April 10 in Lyndon township, west on North Territorial Rd. near Stoffer Rd. The second followed three days later, April 13, on Grass Lake Rd., in Sharon township.

Chelsea fire fighters were called to the Chelsea Medical Center after noon Tuesday, April 15, to assist in smothering a smoke fire in the Center's ambulance.

Upon arriving, fighters determined the cause of the fire to be the breaking of the fan belt.

Broken Fan Belt Results In Minor Smoke Fire

Chelsea fire fighters were called to the Chelsea Medical Center after noon Tuesday, April 15, to assist in smothering a smoke fire in the Center's ambulance.

Upon arriving, fighters determined the cause of the fire to be the breaking of the fan belt.

Firemen Called for Two Small Grass Fires

Chelsea volunteer fire fighters put out two small grass fires last week, both due to unknown causes.

The first was on April 10 in Lyndon township, west on North Territorial Rd. near Stoffer Rd. The second followed three days later, April 13, on Grass Lake Rd., in Sharon township.

Chelsea fire fighters were called to the Chelsea Medical Center after noon Tuesday, April 15, to assist in smothering a smoke fire in the Center's ambulance.

Upon arriving, fighters determined the cause of the fire to be the breaking of the fan belt.

Broken Fan Belt Results In Minor Smoke Fire

Chelsea fire fighters were called to the Chelsea Medical Center after noon Tuesday, April 15, to assist in smothering a smoke fire in the Center's ambulance.

For plants that will be just the right size, sow your seed about two months before you want your transplants to be ready, the experts advise.

sign of a PROFESSIONAL



We're concerned where YOU'RE concerned...

...especially when it comes to real estate. REALTORS® make it their business to help you do more than buy or sell. We're experts in commercial and industrial real estate... land development... property management... and real estate investments. So when you're concerned about real estate... know that REALTORS® are concerned with giving you their very best in professional skill, knowledge and experience.

THE REALTOR®
a voice for America's property owners



ANN ARBOR BOARD OF REALTORS



EQUAL HOUSING OPPORTUNITY

CALL OR STOP IN. CHELSEA GLASS WORKS

WORKMANSHIP AND MATERIALS FULLY GUARANTEED.
Open Daily 8 a.m. to 5 p.m.; Sat. 8 a.m. to 1 p.m.

140 W. Middle, Chelsea Phone (313) 475-8667

WE REPAIR AND REPLACE:

- ★ STORE FRONTS
- ★ FURNITURE TOPS
- ★ SHOWER DOORS
- ★ THERMOPANES
- ★ AUTO GLASS - Including Windshields
- ★ MIRRORS
- ★ PATIO DOORS
- ★ TUB ENCLOSURES

Free Pick-up and delivery on auto work.

Storm Door & Window Reglazing & Screens

COMMERCIAL BUILDINGS OR RESIDENTIAL

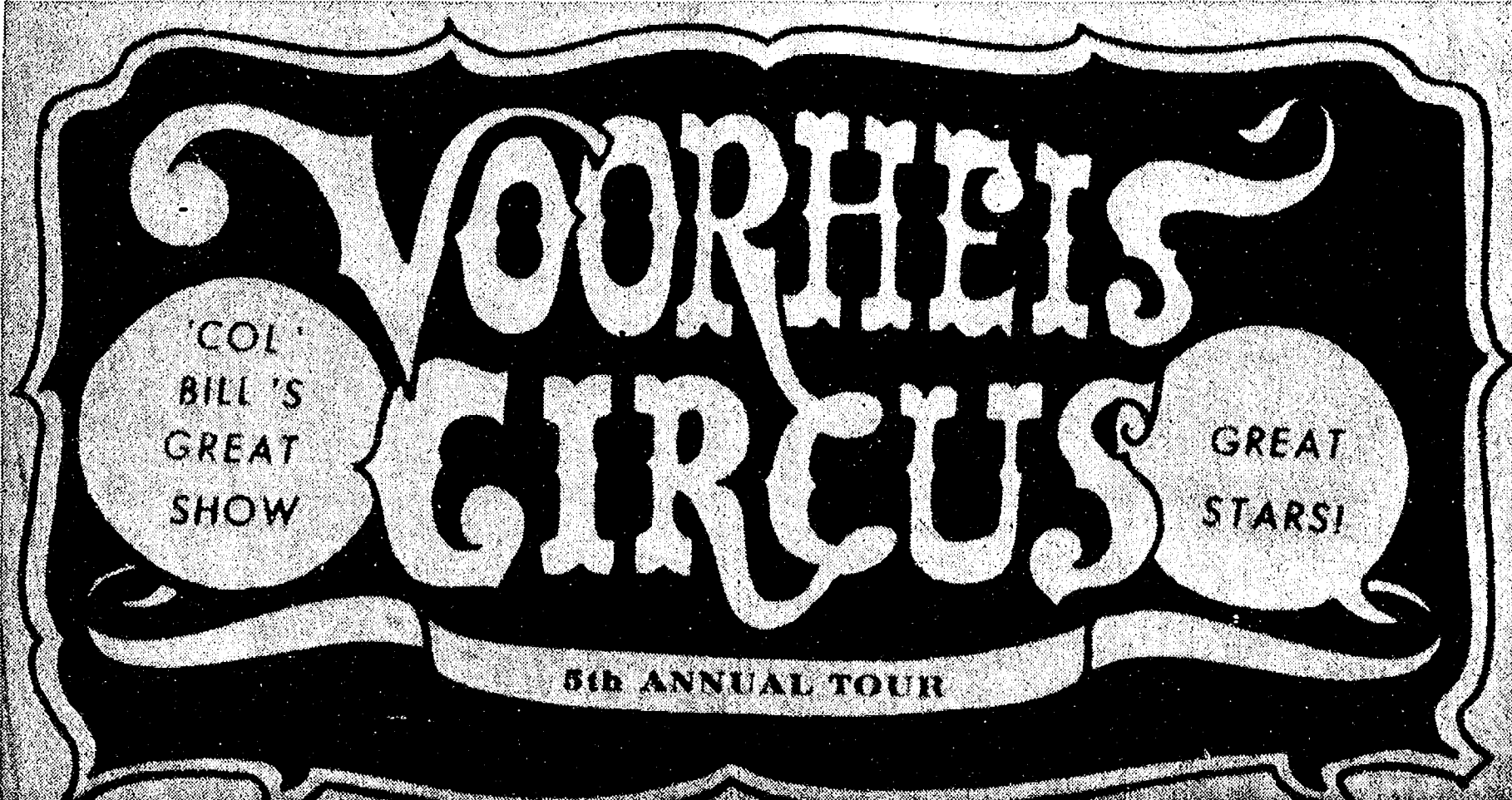
PROMPT SERVICE REASONABLE PRICES

"SCANDINAVIAN ADVENTURE"

16 days - escorted tour of Germany, Denmark, Sweden, and Norway. Departing from Detroit Metro Airport Sept. 1, 1975.

If you are interested in joining area residents on this tour, contact Rev. Roman Reineck, Manchester, Mich. for more details. Phone 428-8000.

FIRST TIME EVER IN YOUR VILLAGE COMPLETELY NEW AND EXCITING



TRAINED & WILD ANIMAL SHOW

MAMMOTH MIRTHMAKING EXTRAVAGANZA OF THRILLS

TASHURA - WORLD'S ONLY UNCAGED HORSEBACK RIDING LION

PRESENTED BY EUROPE'S FAMED ALBERTO ZOPPE TROUPE

As seen in Cecil B. DeMille's "Greatest Show on Earth" with Cornel Wilde, Betty Hutton, Charlton Heston, James Stewart.

FEATURING "CARLA" THE DARING BAREBACK BALLERINA

DYNAMIC ARRAY OF CIRCUS STARS

2 HUGE 2-HOUR PERFORMANCES

ADVANCE TICKETS ON SALE

AT CHELSEA HIGH SCHOOL OFFICES

SAVE MONEY - BUY TICKETS IN ADVANCE OF SHOW DAY

ALL STUDENTS \$1
ADULTS \$2

THIS COUPON AND \$6.50 ADMITS ANY 2 ADULTS PLUS 4 CHILDREN under 13

NOTHING ADDITIONAL TO PAY

Not Available at Box Office Without This Coupon.

POPULAR PRICED TICKETS ON SALE AT BOX OFFICE

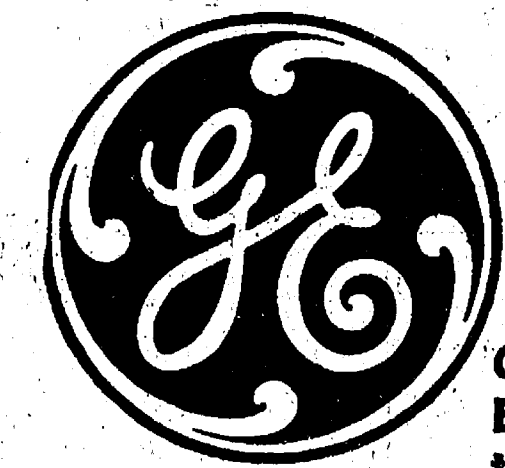
Follow THIS Boy to paint headquarters!



You will remember the quality of Dutch Boy paints long after the price is forgotten.

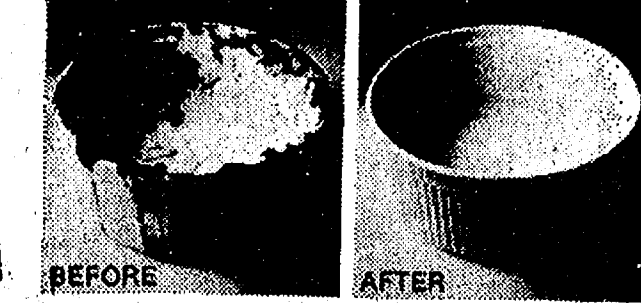
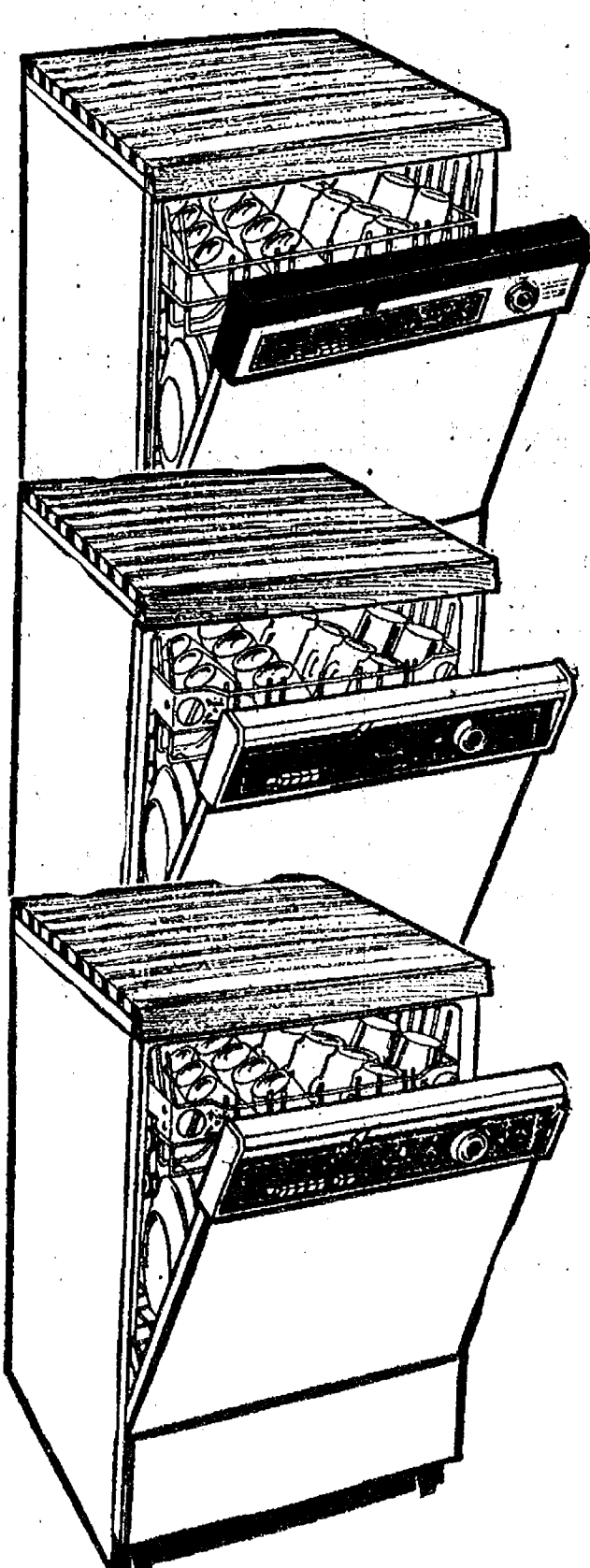
MERKEL

Home Furnishings



MORE THAN JUST A DISHWASHER The Potscrubber Dishwasher

General Electric can show you this. Because they have the dishwashers that will do this.



3 POTSCRUBBER™ DISHWASHER MODELS TO CHOOSE FROM... all have GE's exclusive Power Scrub® Cycle—the cycle that makes the Potscrubber dishwasher do its amazing job on pots, pans and casseroles with brushless water action.

4 PUSHBUTTON CYCLES
• Power Scrub® Cycle, Normal Wash, Power Saving Short Wash and Rinse & Hold • Automatic Detergent & Rinse-Glo Dispensers

5 WASH CYCLES
• Includes Gentle Wash plus Plate Warmer Setting • Dial-A-Level® Rack —adjusts easily to fit load

6 WASH CYCLES
• Includes Power-Scrub® Cycle plus Sanit Cycle • Water Heating Selection • Plate Warmer Setting • Dial-A-Level® Rack

GE Potscrubber™ Dishwasher Models Includes GSC401, GSC401, GSC401

Prices Start As Low As **\$249⁹⁵**

There are probably some of the reasons why more people use GE dishwashers than any others.



GOOD SERVICE... Another reason why GE is America's #1 major appliance value.

HEYDLAUFF'S

Phone 475-1221

113 N. Main

Chelsea



Polly's

MASTER
MARKETS

1101 M52
CHELSEA

201 PARK
VANDERCOOK LK.

1621
Spring Arbor Rd.
JACKSON

960
N. WEST AVE.
JACKSON

115
W. PROSPECT ST.
JACKSON

1809
E. MICH. AVE.
JACKSON

get to know us...

WE CAN HELP YOU SAVE ON YOUR FOOD BILL!

**OPEN .
DAILY:**

8

A.M. TO

10

P.M.

OPEN

SUNDAY:

9

A.M. TO

6

P.M.



QUALITY PRODUCE



QUALITY MEAT



COLD BEER & WINE



LOTTERY TICKETS



SIDES OF BEEF



FRUIT BASKETS



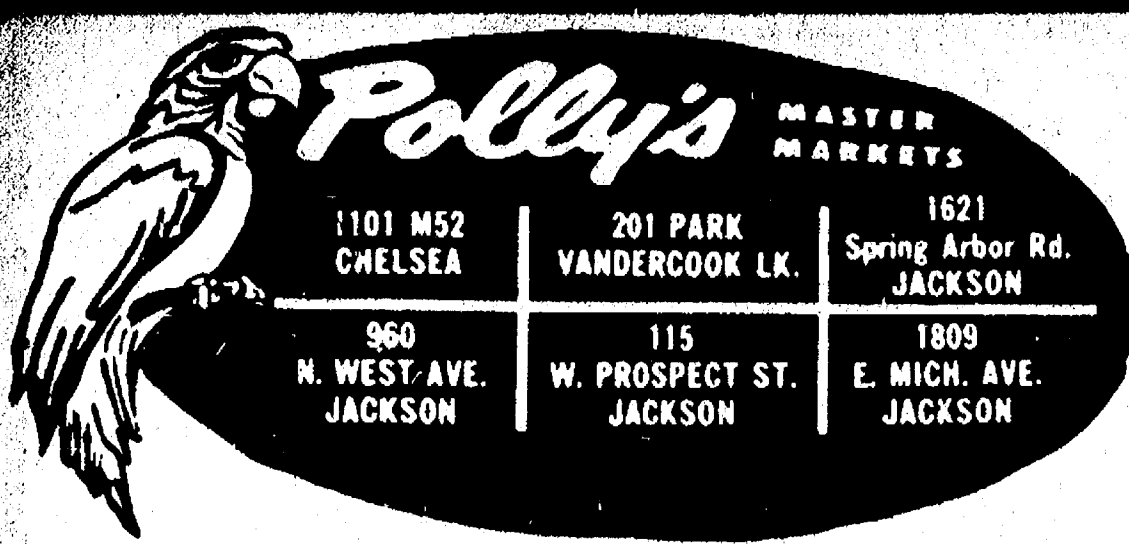
DRY CLEANING



PHOTO PROCESSING

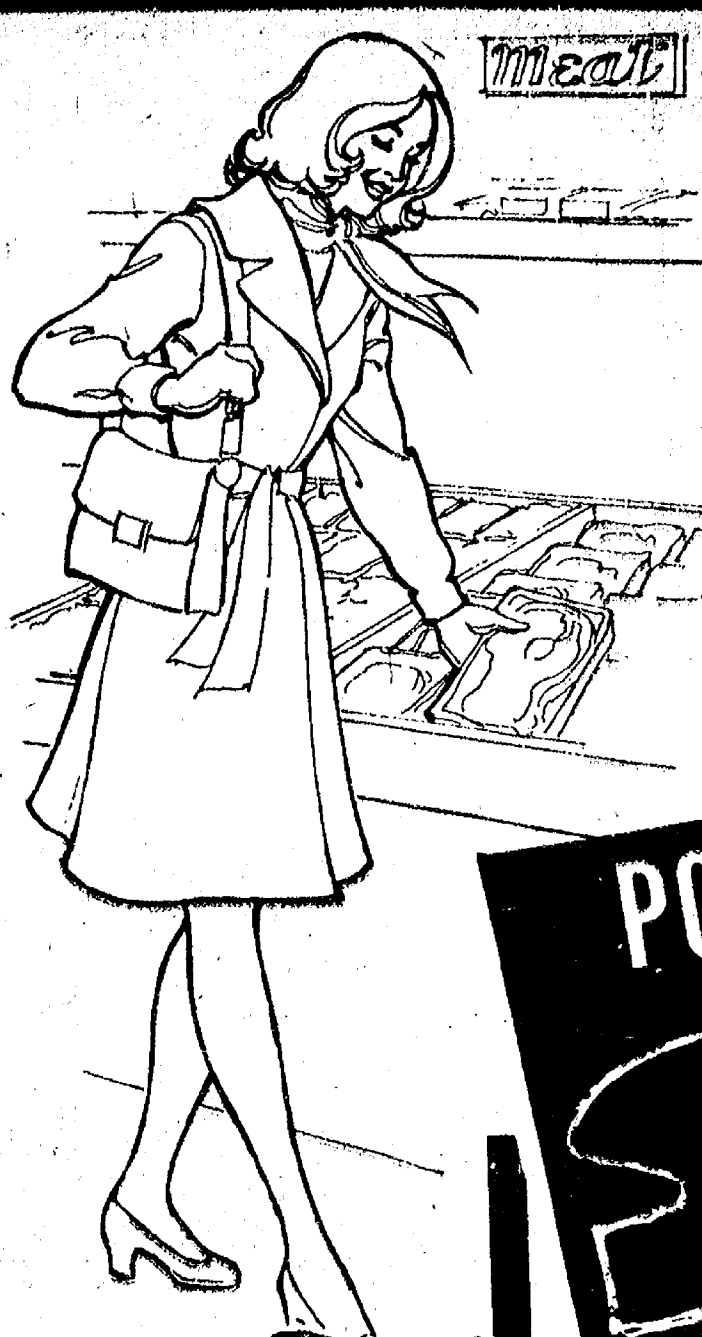


VARIETY AT LOW PRICES



OPEN 8 A.M. 'TIL 10 P.M. DAILY
9 A.M. 'TIL 6 P.M. SUNDAY
ALL PRICES EFFECTIVE THRU SUNDAY, APRIL 6, 1975
WE RESERVE THE RIGHT TO LIMIT QUANTITIES

For those of you who really appreciate an extra juicy flavorful piece of meat can't afford to miss our Polly's Pride Quality Beef Steak Sale. The highest quality beef you can buy at Polly's low, low Prices. So why settle for less when you can buy the best . . . Polly's Pride Quality Beef only at Polly's meat counters!



RIGHT NOW,
YOUR BEST BUY IS OUR
Priced Right **MEAT**

POLLY'S PRIDE QUALITY BEEF . . . STEAK SALE!

POLLY'S PRIDE QUALITY BEEF ROUND STEAK

POLLY'S PRIDE QUALITY
GROUND STEAK
LB. \$1.18

POLLY'S PRIDE QUALITY
FLANK STEAK
LB. \$1.38

98¢

POLLY'S PRIDE QUALITY SIRLOIN STEAK

POLLY'S PRIDE QUALITY
TIP STEAK
LB. \$1.28

\$1.08

POLLY'S PRIDE QUALITY PORTERHOUSE

POLLY'S PRIDE QUALITY BEEF
CUBE STEAK
LB. \$1.38

\$1.38

POLLY'S PRIDE QUALITY BEEF RUMP ROAST

\$1.28

POLLY'S PRIDE
Lean Tender BEEF



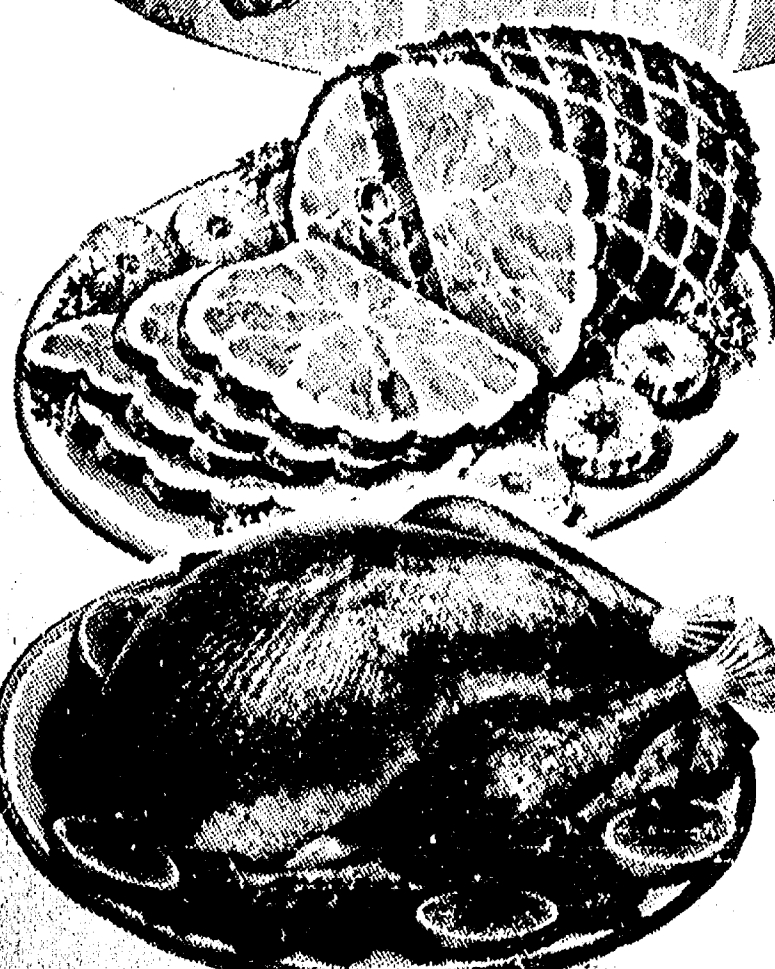
GRADE A SPLIT FRYERS

49¢

POLLY'S PRIDE QUALITY BEEF
T-BONE STEAK
\$1.28

TWO GRADES OF BEEF TO SERVE YOU BETTER

SAVE 20' FRESH BEEF LIVER	LB.	59¢	SAVE 20' QUARTERED PORK JOINS	LB.	89¢
SAVE 20' FRESH BEEF HEARTS	LB.	39¢	SAVE 30' FARMER PEETS HOT DOGS	12-OZ.	59¢
SAVE 20' FRESH BEEF TONGUE	LB.	69¢	SAVE 30' FARMER PEETS RE-PEETER BACON	1-LB.	\$1.29
SAVE 40' BULK BOILED HAM	1/2-LB.	79¢	SAVE 20' BULK LARGE BOLOGNA	LB.	\$1.19



"Farmer Peets Boneless" BONANZA HAM

whole or half \$1.39
LB. water added

SMALL GRILL TURKEYS

59¢



POLLY'S PRIDE QUALITY WHOLE BEEF HINDS

lb. 99¢

POLLY'S PRIDE QUALITY WHOLE BEEF TENDERLOIN

lb. \$2.19

CUT & WRAPPED AT NO EXTRA CHARGE!

SAVE 20' W/IN-STORE COUPON FARMER PEETS ROLL SAUSAGE

1-LB. 79¢

SAVE 20' W/IN-STORE COUPON FARMER PEETS LUNCH MEAT

1-LB. \$1.09

SAVE 20' W/IN-STORE COUPON ECKRICH SMORGAS PAK

1-LB. \$1.39

SAVE 20' W/IN-STORE COUPON ECKRICH ALL BEEF FRANKS

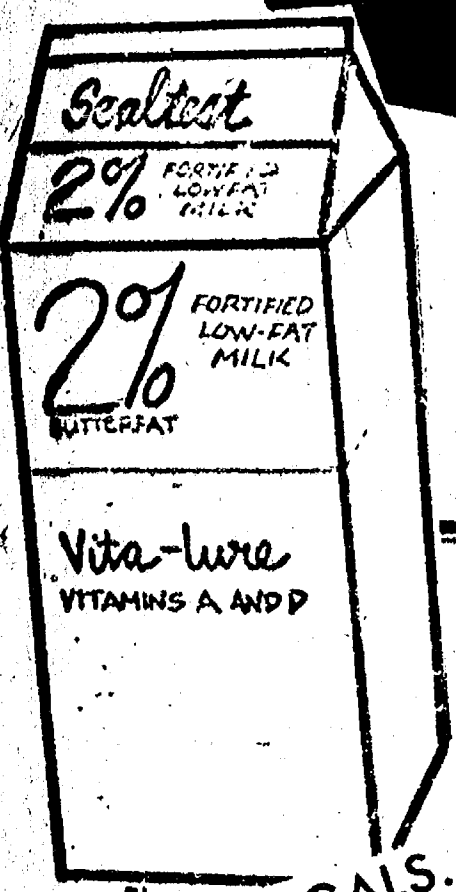
1-LB. \$1.09

SUPER BUYS!



Polly's MASTER MARKETS

1101 M52 CHELSEA	201 PARK VANDERCOOK LK.	1621 Spring Arbor Rd. JACKSON
960 N. WEST AVE. JACKSON	115 W. PROSPECT ST. JACKSON	1809 E. MICH. AVE. JACKSON



SAVE 40¢
WITH COUPON
and
\$5.00 PURCHASE

2 99¢
for 1/2-GALS.



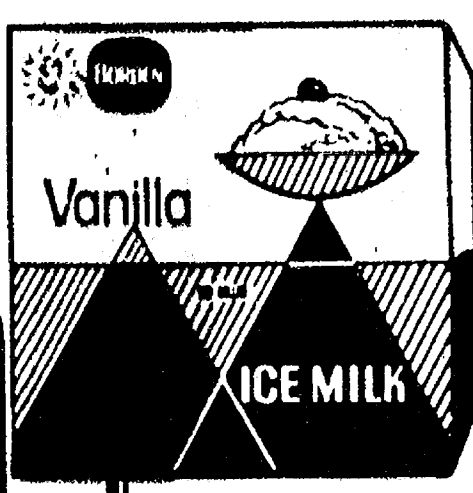
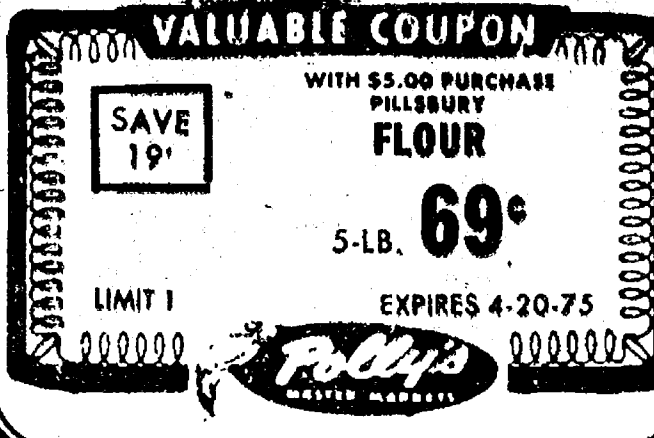
SAVE 36¢
WITH COUPON
and
\$5.00 PURCHASE

\$ 1 79
2-LB.



SAVE 19¢
WITH COUPON
and
\$5.00 PURCHASE

\$ 69¢
5-LB.



SAVE 30¢
WITH COUPON
and
\$5.00 PURCHASE

\$ 1 29
GAL.



**Scot
Lad
Can
Goods
Sale!**

SCOT LAD SLICED or WHOLE
POTATOES
SCOT LAD
RED BEANS
SCOT LAD RED
KIDNEY BEANS
SCOT LAD
SWEET PEAS
SCOT LAD CUT
GREEN BEANS
SCOT LAD
EARLY JUNE PEAS

16 OZ. CANS
4 for \$1

SCOT LAD
PORK & BEANS
1-LB.
SLICED CARROTS
1-LB.
SPINACH

SCOT LAD
ORANGE DRINK
10-1/2 OZ. AD 48 OZ.
GRAPE DRINK
SCOT LAD 29 OZ.
PEACHES

SAVE 20¢ PETER PAUL
COOKIES 12-OZ. **59¢**
SAVE 16¢ PUSSY N' BOOTS
MOIST MEALS 12-OZ. **49¢**
SAVE 50¢ BES PAK
TRASH LINERS 25-CT. **\$1.99**
SAVE 70¢ DRY
FRISKIES 25-LB. **\$4.59**
SAVE 22¢ NESTLES
CHOC. CHIPS 12-OZ. **\$1.09**
SAVE 14¢
CRISCO OIL 38-OZ. **\$1.59**
SAVE 10¢ GENUINE
VLASIC DILLS 46-OZ. **99¢**
SAVE 16¢
GLADE 7-OZ. **49¢**
WYLER'S
DRINK MIX 24-OZ. CANS **\$1.89**

SAVE 8¢ SEALTEST
HALF N' HALF PT. **33¢**
SAVE 14¢ SHERBET SOFT BOWL
MARGARINE 1-LB. **59¢**
SAVE 9¢ SCOT LAD
TOMATOES 2 29-OZ. **89¢**
SAVE 10¢ SCAFFER
CORN BREAD 2 29-OZ. **49¢**
SAVE 5¢ HOLSUM
BUTTERTOP 20-OZ. **59¢**
SAVE 10¢ BORDEN
FUDGE BAR 12-PK. **69¢**
MRS. GRASS
ONION SOUP 1 1/4-OZ. **15¢**
40¢ OFF FAMILY
TIDE 171-OZ. **\$3.89**
TWIN PAK
SCOT TOWELS **65¢**



SAVE 30¢
W/IN-STORE COUPON
JOHNSON & JOHNSON
BABY OIL
10-OZ. **\$1.27**

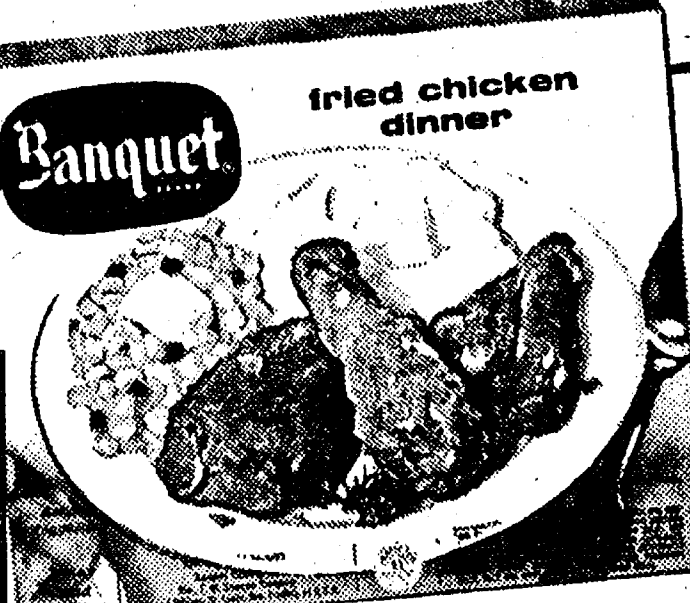
BONUS PAK
CREST 8.75-OZ. **97¢**
CONCENTRATED
PRELL 5-OZ. **\$1.19**
LIQUID 25 OFF
PRESS 11-OZ. **99¢**
EXTRA DRY 25 OFF
ARID 6-OZ. **69¢**
GILLETTE
FOAMY 11-OZ. **79¢**
BAYERS CHILD'S
ASPIRIN 36¢ **29¢**

6-PAK CANDY BARS

3 MUSKETTERS
SNICKERS
MILKY WAY
MARS
M&M PLAIN
M&M PEANUT

79¢

SAVE UP TO \$5.83
WITH IN-STORE COUPONS,
PLUS COUPON IN THIS AD



8 VARIETIES
**BANQUET
DINNERS**

47¢
11-OZ.

SAVE 29¢ PET RITZ 9-IN.
PIE SHELLS 5-PK. **99¢**
SAVE 14¢ RICHES
PANCAKE BATTER 1-LB. **49¢**
SAVE 12¢ QUEEN OF SCOT
ORANGE JUICE 12-OZ. **43¢**
SAVE 27¢ LA CHOY
EGG ROLLS 5-OZ. **59¢**
SAVE 22¢ FRESH LIKE
MIXED VEGETABLES 24-OZ. **59¢**
SAVE 48¢ GORTONS
FISH FILLETS 2-LB. **\$1.49**
SAVE 26¢ NICKERSON
OCEAN PERCH 1-LB. **69¢**

**Fresh
Baked Goods**

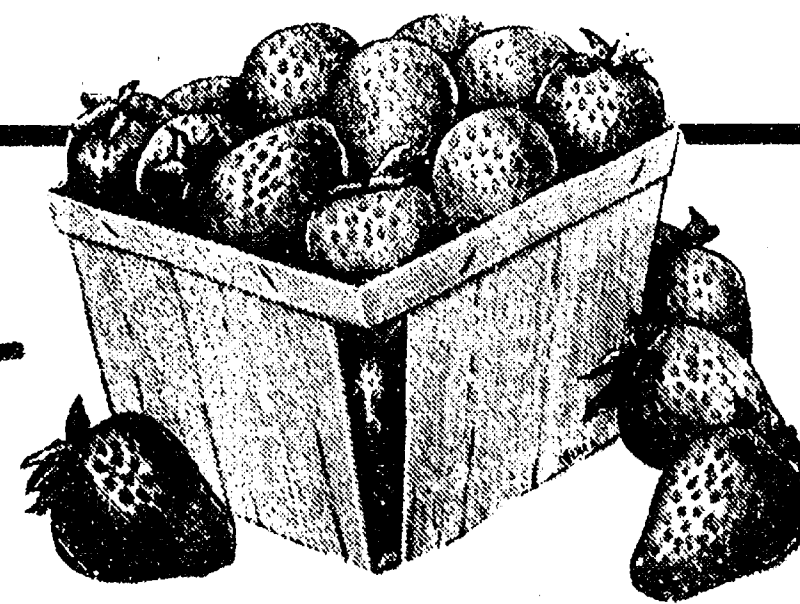
FRESH
**BLUEBERRY
PIE** 8" **\$1.09**
FRESH
**DUTCH
APPLE PIE** 8" **\$1.09**
FRESH
**SUGAR
COOKIES** DOZ. **89¢**

BUY 1 SAVE 20¢	PILLSBURY HUNGRY JACK INSTANT POTATOES	16-OZ. 69¢
BUY 1 SAVE 30¢	KEN-L-RATION BURGERS	36-OZ. 99¢
BUY 1 SAVE 24¢	FINAL TOUCH FABRIC SOFTENER	33-OZ. 69¢
BUY 1 SAVE 20¢	GLAD LAWN BAG	5-CT. 89¢
BUY 2 SAVE 20¢	ARCHWAY COOKIES	9/13 OZ. 69¢
BUY 4 SAVE 34¢	ASSORTED HI-KLAS POP	32-OZ. RET. 4 for \$1
BUY 4 SAVE 20¢	ASSORTED DIET NO-CAL	32-OZ. RET. plus dep. 4 for \$1
BUY 5 SAVE 20¢	FRISKIES BUFFET CAT FOOD	6-OZ. 5 for \$1
BUY 2 SAVE \$1.40	SAUSAGE & PEPPERONI TONY'S PIZZAS	28-31 OZ. \$1.99
BUY 1 SAVE 20¢	ECKRICH SMORGAS PAK	1-LB. \$1.39
BUY 1 SAVE 20¢	ECKRICH ALL BEEF FRANKS	1-LB. \$1.09
BUY 1 SAVE 20¢	FARMER PEETS LUNCH MEAT	1-LB. \$1.09
BUY 1 SAVE 20¢	FARMER PEETS ROLL SAUSAGE	1-LB. 79¢
BUY 1 SAVE 30¢	JOHNSON & JOHNSON BABY OIL	10-OZ. \$1.27
BUY 1 SAVE 10¢	ASSORTED UMBRELLAS	89¢

**YOU CAN
Count on
Freshness
ALWAYS!**



POLLY'S PRIDE
QUALITY BEEF
CUBE STEAK
LB **\$1.28**



SNO-WHITE
MUSHROOMS LB. **79¢**
CELLO-PAK TEXAS
CARROTS LB. **19¢**
CELLO-PAK RED
RADISHES 8-OZ. **10¢**

Our produce man is top banana
when it comes to fruits and vegeta-
bles. He stocks the juiciest...crispiest
produce. Look for weekly specials!

CALIFORNIA LUSCIOUS RED
STRAWBERRIES
49¢
PINT

CALIFORNIA NAVEL
ORANGES
113
SIZE **69¢**
DOZ.

FLORIDA PINK & WHITE
GRAPEFRUIT
3 for 49¢

Thank You

FOR SHOPPING AT...



WHERE WE ARE
HAPPY TO.....

save YOU MONEY!